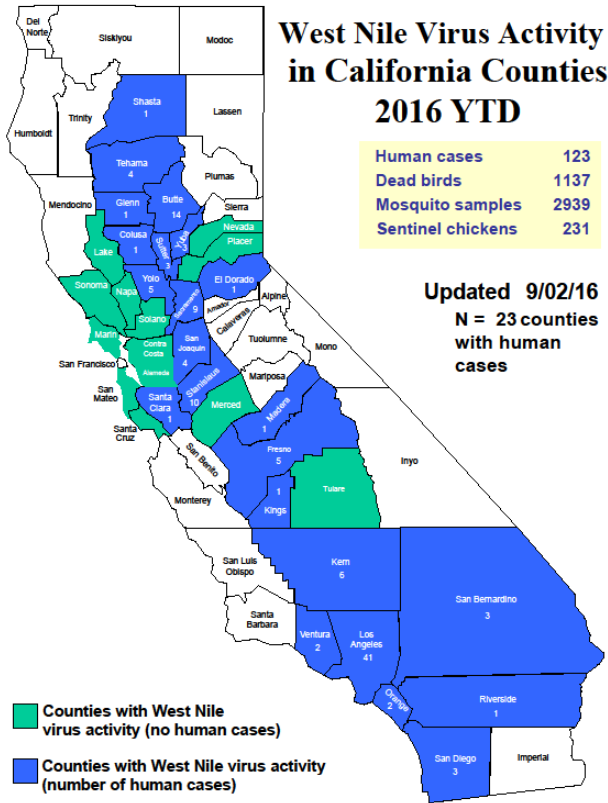




# San Mateo County Health System

## West Nile Virus Report



West Nile Virus Activity		
<b>California (as of 9/2/16)</b>	<b>SMC<sup>1</sup></b>	<b>CA<sup>1</sup></b>
Human Cases	0	123
Human Deaths	0	2
Dead Birds	10	1137
Mosquito Pools	5	2939
Sentinel Chickens	0	231
<b>Nationwide (as of 9/6/16)</b>	<b>Activity</b>	
Human Cases	537	
Human Deaths	14	
Human Activity*	38 states	
Non-Human Activity**	38 states	

\*includes cases with West Nile neuroinvasive disease, West Nile fever; excludes asymptomatic infections  
 \*\*includes WNV veterinary disease cases and WNV infections in mosquitoes, birds, sentinel animals

San Mateo County Mosquito & Vector Control District Response	
<b>Fogging Location (as of 9/2/16)</b>	<b>Date</b>
Redwood City and Atherton	7/29 PM—7/30 AM
Atherton and Unincorporated San Mateo County	8/4 PM—8/5 AM
San Mateo and Foster City	8/14 PM—8/15 AM

Note: Questions regarding mosquito fogging activities should be directed to the San Mateo County Mosquito & Vector Control District at (650) 344-8592.

### What Are Sentinel Chickens?

There are several surveillance arms to West Nile Virus (WNV) and sentinel chickens are one of them. Sentinel chickens are used by the San Mateo County Mosquito and Vector Control District to detect WNV, among other mosquito-borne diseases, in rural parts of the county. If any sentinel chickens are found to be infected with WNV, rest assured that they cannot pass the virus onto mosquitoes, people, or other birds. To learn more, [click here](#). There have been no human cases of WNV in San Mateo County this season. To prevent mosquito-borne diseases, eliminate standing water around your home and take steps to [protect yourself from mosquito bites](#).

### DEAD BIRD REPORTING:

- All dead bird reports and pick up should be directed to the California Department of Public Health by:
  - Calling 1-877-WNV-BIRD (877-968-2473), Sunday through Friday, 8 AM—4:30 PM
  - OR
  - Online reporting at: [www.westnile.ca.gov/report\\_wnv.php](http://www.westnile.ca.gov/report_wnv.php)
- Birds or squirrels which are not picked up within 24 hours should be disposed of in the following manner:
  - Use gloves, a plastic bag, or shovel to pick up the animal
  - Place into an outside trash can
  - Wash your hands
- There is no evidence that the WNV virus can be acquired by handling dead birds or squirrels

### ADDITIONAL RESOURCES:

- CDC: [www.cdc.gov/westnile](http://www.cdc.gov/westnile)
- CDPH WNV Website: [www.westnile.ca.gov](http://www.westnile.ca.gov)
- San Mateo County Health System: [www.smchealth.org/WNV](http://www.smchealth.org/WNV)
- San Mateo County Mosquito and Vector Control District: [www.smcmvcd.org](http://www.smcmvcd.org) or (650) 344-8592
- All inquiries from the press or politicians should be directed to the Public Information Officer at (650) 867-1661

Data Sources:

- (1) California Department of Public Health (CDPH), Vector-Borne Disease Section as of September 2, 2016 ([www.westnile.ca.gov](http://www.westnile.ca.gov))
- (2) Centers for Disease Control and Prevention (CDC) as of September 6, 2016 ([www.cdc.gov/westnile](http://www.cdc.gov/westnile))