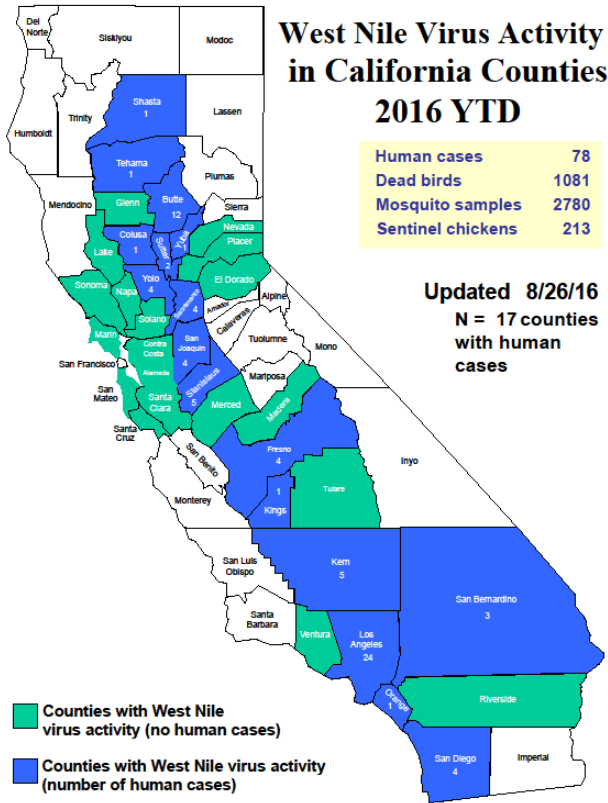




San Mateo County Health System

West Nile Virus Report



West Nile Virus Activity		
California (as of 8/26/16)	SMC¹	CA¹
Human Cases	0	78
Human Deaths	0	2
Dead Birds	10	1081
Mosquito Pools	5	2780
Sentinel Chickens	0	213
Nationwide (as of 8/30/16)	Activity	
Human Cases	406	
Human Deaths	9	
Human Activity*	32 states	
Non-Human Activity**	38 states	

*includes cases with West Nile neuroinvasive disease, West Nile fever; excludes asymptomatic infections

**includes WNV veterinary disease cases and WNV infections in mosquitoes, birds, sentinel animals

San Mateo County Mosquito & Vector Control District Response	
Fogging Location (as of 8/26/16)	Date
Redwood City and Atherton	7/29 PM—7/30 AM
Atherton and Unincorporated San Mateo County	8/4 PM—8/5 AM
San Mateo and Foster City	8/14 PM—8/15 AM

Note: Questions regarding mosquito fogging activities should be directed to the San Mateo County Mosquito & Vector Control District at (650) 344-8592.

How to Make Mosquitoes Picture Ready

One way to identify the species of mosquito around your home or work is to take a picture of it and to send it to the San Mateo County Mosquito and Vector Control District (SMCMVCD). The public's participation is appreciated in reporting suspected [Aedes mosquitoes](#), which carries such viruses as Zika, Chikungunya, and Dengue. SMCMVCD has some [great tips](#) for taking good pictures of mosquitoes for identification, particularly since some species are very small. These tips are also applicable to other insects or arachnids.

To prevent mosquito-borne diseases, eliminate standing water around your home and take steps to [protect yourself from mosquito bites](#).

DEAD BIRD REPORTING:

- All dead bird reports and pick up should be directed to the California Department of Public Health by:
 - Calling 1-877-WNV-BIRD (877-968-2473), Sunday through Friday, 8 AM—4:30 PM
 - OR
 - Online reporting at: www.westnile.ca.gov/report_wnv.php
- Birds or squirrels which are not picked up within 24 hours should be disposed of in the following manner:
 - Use gloves, a plastic bag, or shovel to pick up the animal
 - Place into an outside trash can
 - Wash your hands
- There is no evidence that the WNV virus can be acquired by handling dead birds or squirrels

ADDITIONAL RESOURCES:

- CDC: www.cdc.gov/westnile
- CDPH WNV Website: www.westnile.ca.gov
- San Mateo County Health System: www.smchealth.org/WNV
- San Mateo County Mosquito and Vector Control District: www.smcmvcd.org or (650) 344-8592
- All inquiries from the press or politicians should be directed to the Public Information Officer at (650) 867-1661

Data Sources:

- (1) California Department of Public Health (CDPH), Vector-Borne Disease Section as of August 26, 2016 (www.westnile.ca.gov)
- (2) Centers for Disease Control and Prevention (CDC) as of August 30, 2016 (www.cdc.gov/westnile)