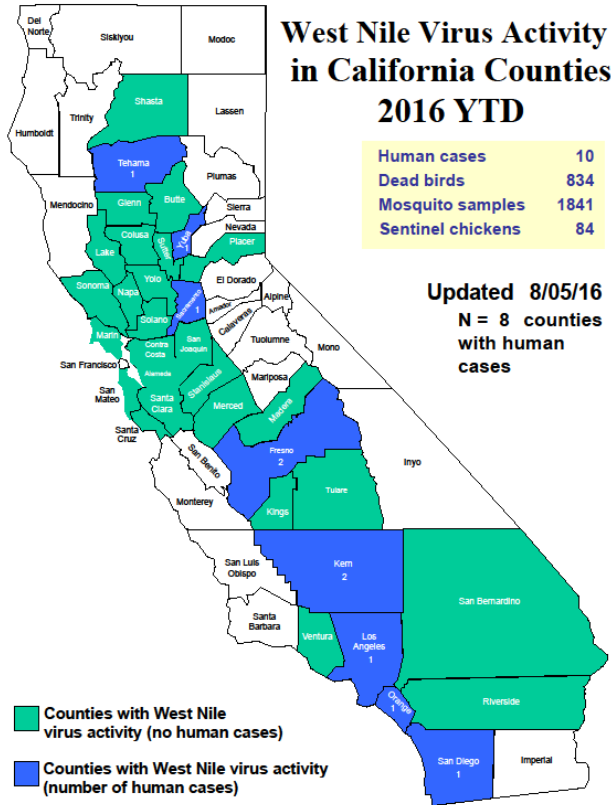




San Mateo County Health System

West Nile Virus Report



West Nile Virus Activity		
California (as of 8/8/16)	SMC¹	CA¹
Human Cases	0	10
Human Deaths	0	1
Dead Birds	10	834
Mosquito Pools	4	1841
Sentinel Chickens	0	84
Nationwide (as of 8/2/16)	Activity	
Human Cases	89	
Human Deaths	0	
Human Activity*	19 states	
Non-Human Activity**	29 states	

*includes cases with West Nile neuroinvasive disease, West Nile fever; excludes asymptomatic infections
 **includes WNV veterinary disease cases and WNV infections in mosquitoes, birds, sentinel animals

San Mateo County Mosquito & Vector Control District Response	
Fogging Location (as of 8/8/16)	Date
Redwood City and Atherton	7/29 PM—7/30 AM
Atherton and Unincorporated San Mateo County	8/4 PM—8/5 AM

Note: Questions regarding mosquito fogging activities should be directed to the San Mateo County Mosquito & Vector Control District at (650) 344-8592.

First Human West Nile Virus Death of 2016 in California

The California Department of Public Health (CDPH) [confirmed California's first human West Nile Virus Death of 2016](#) on August 5. Dr. Karen Smith, CDPH's Director and State Health Officer, urged Californians to protect themselves against mosquito bites. This death is not yet reflected in the nationwide case count in the table above. There have been no human cases in San Mateo County this season. To prevent West Nile Virus, eliminate standing water around your home and take steps to [protect yourself from mosquito bites](#).

DEAD BIRD REPORTING:

- All dead bird reports and pick up should be directed to the California Department of Public Health by:
 - Calling 1-877-WNV-BIRD (877-968-2473), Sunday through Friday, 8 AM—4:30 PM
 - OR
 - Online reporting at: www.westnile.ca.gov/report_wnv.php
- Birds or squirrels which are not picked up within 24 hours should be disposed of in the following manner:
 - Use gloves, a plastic bag, or shovel to pick up the animal
 - Place into an outside trash can
 - Wash your hands
- There is no evidence that the WNV virus can be acquired by handling dead birds or squirrels

ADDITIONAL RESOURCES:

- CDC: www.cdc.gov/westnile
- CDPH WNV Website: www.westnile.ca.gov
- San Mateo County Health System: www.smchealth.org/WNV
- San Mateo County Mosquito and Vector Control District: www.smcmvcd.org or (650) 344-8592
- All inquiries from the press or politicians should be directed to the Public Information Officer at (650) 867-1661

Data Sources:

- (1) California Department of Public Health (CDPH), Vector-Borne Disease Section as of August 8, 2016 (www.westnile.ca.gov)
- (2) Centers for Disease Control and Prevention (CDC) as of August 2, 2016 (www.cdc.gov/westnile)