

**COUNTY**<sub>OF</sub> **SAN MATEO**

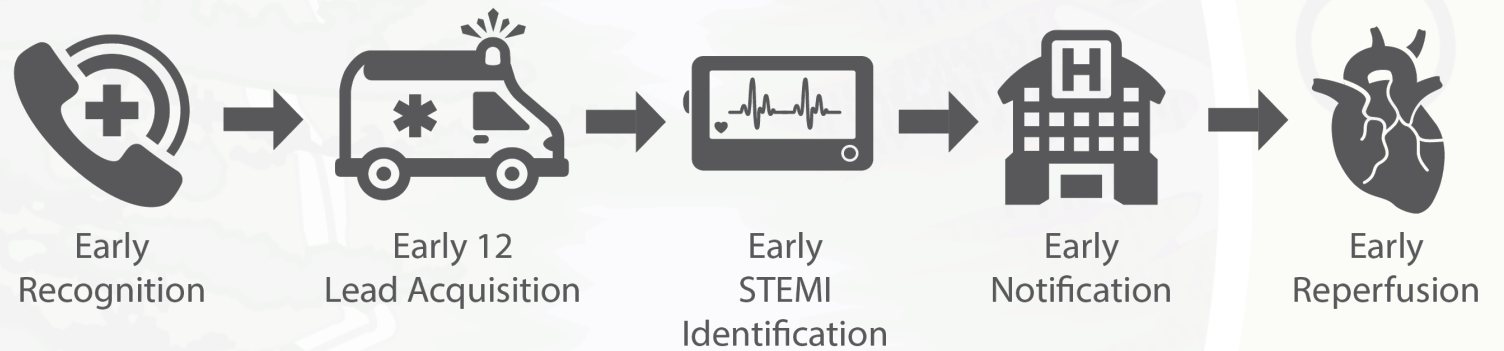


SAN MATEO COUNTY HEALTH  
**EMERGENCY  
MEDICAL SERVICES**

# STEMI System of Care Updates

EMCC December 2022

# ST-Elevation Myocardial Infarction (STEMI) System of Care



SAN MATEO COUNTY HEALTH  
**EMERGENCY  
MEDICAL SERVICES**

# STEMI System of Care

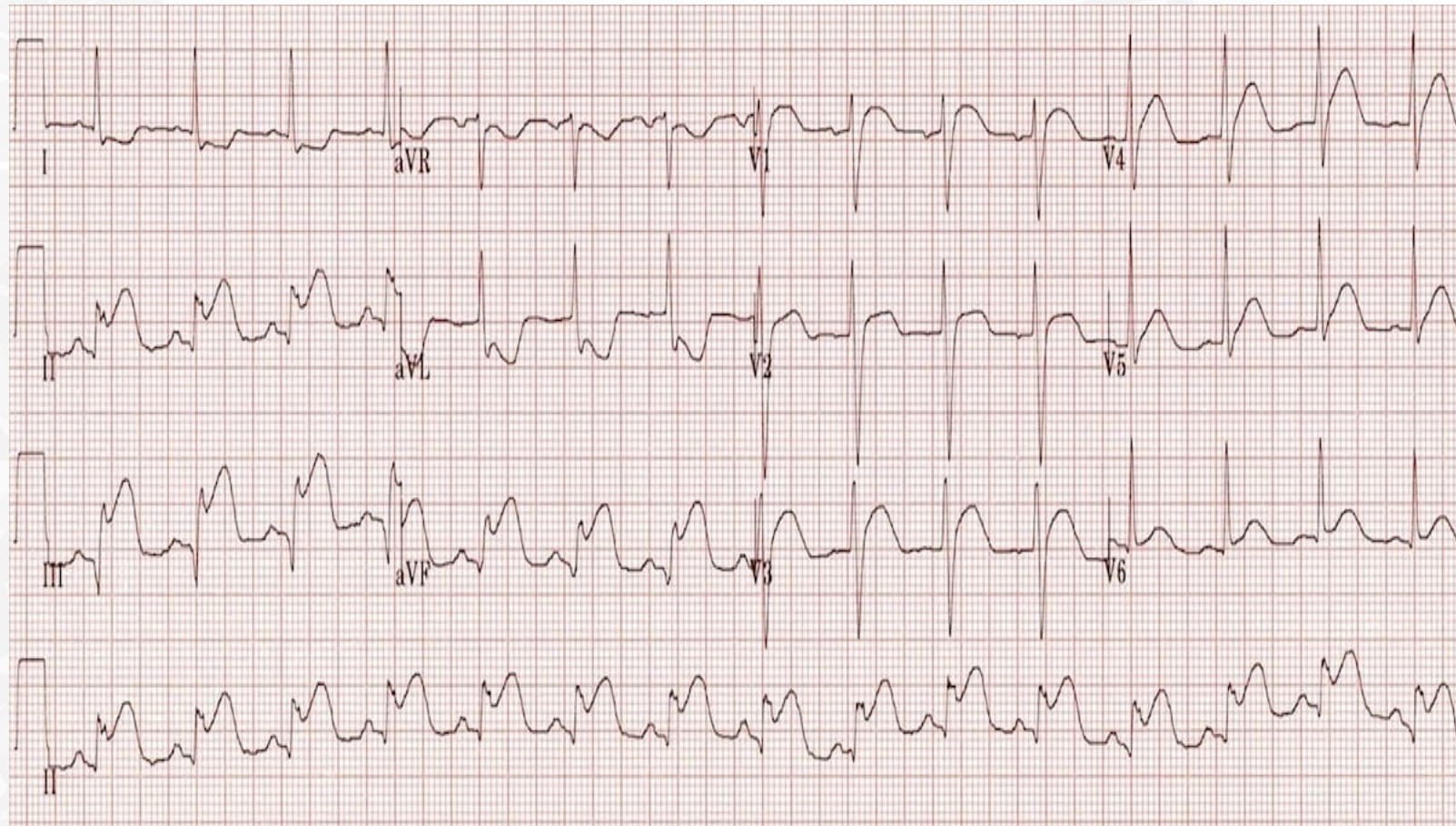
- San Mateo County STEMI Program began in 2013
- EMS Agency designates STEMI Receiving Centers (SRCs)
- Designated SRCs serving San Mateo Community:
  - Seton
  - Mills-Peninsula
  - Kaiser Redwood City
  - Sequoia
  - Stanford
- STEMI Referral Hospitals:
  - Kaiser SSF
  - SMMC



SAN MATEO COUNTY HEALTH  
**EMERGENCY  
MEDICAL SERVICES**



# STEMI System Activation



- Activated at patient's side
- STEMI alert
- Goals:
  - 5 min to 12-Lead ECG
  - 15 min scene time



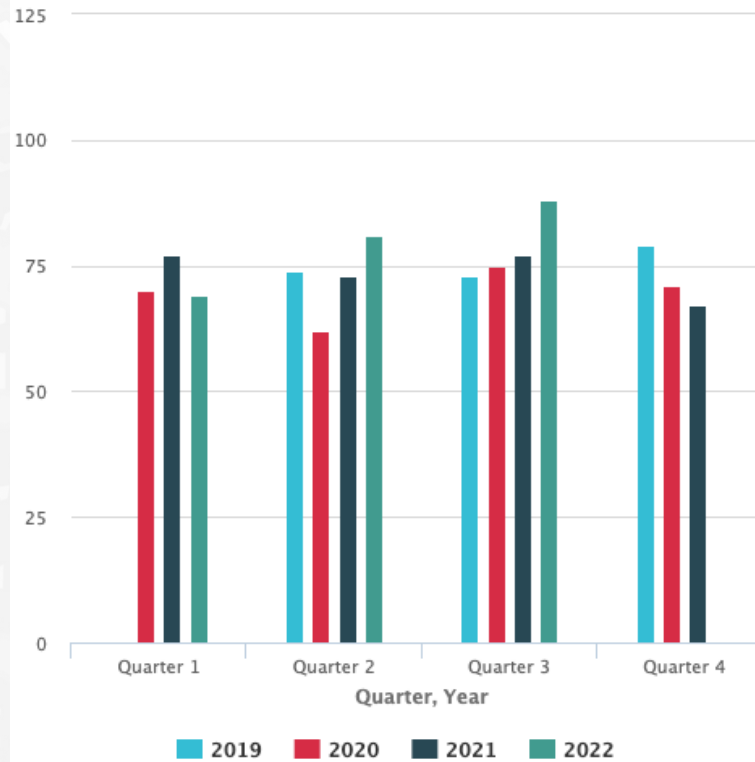
SAN MATEO COUNTY HEALTH  
**EMERGENCY  
MEDICAL SERVICES**

# STEMI Care - Hospital

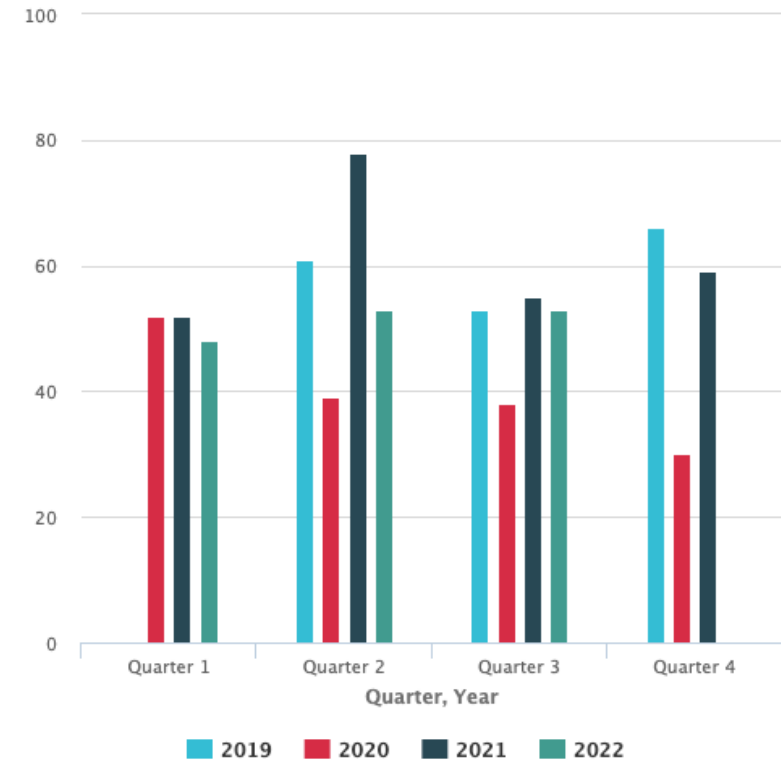


SAN MATEO COUNTY HEALTH  
**EMERGENCY  
MEDICAL SERVICES**

STEMI Alerts



STEMI Cases



- Goal: 12-Lead ECG within 10 min of arrival in ED
- San Mateo County system exceeds national Door-to-Balloon time

# COUNTY OF SAN MATEO



SAN MATEO COUNTY HEALTH  
**EMERGENCY  
MEDICAL SERVICES**

---

## THANK YOU