



# STD/HIV Quarterly Report

San Mateo County Health System, STD/HIV Program

[www.smchealth.org/diseasereporting](http://www.smchealth.org/diseasereporting) • STD Clinic: 650.573.2999 • Provider STD Reporting: 650.573.2346

650.573.2919 (fax) Issue No. 41 • Quarter 3: Jul 1 - Sep 30, 2016

Vivian Levy MD, STD Controller • Scott Morrow MD, MPH, MBA, Health Officer • Aracely Tamayo, PhD Epidemiologist

**Table 1** STD Cases Reported Among County of an Mateo Residents by Quarter (Jul 1 - Sep 30) and Year to Date for 2016 and 2015

	2016		2015	
	3rd Qtr	YTD	3rd Qtr	YTD
<b>Chlamydia trachomatis (CT)</b>	627	1,896	628	1,788
Male	244	731	223	663
Female	381	1,161	402	1,116
Unknown / Transgender	2	4	3	9
<b>Lymphogranuloma venereum</b>	0	1	0	0
<b>Gonorrhea (GC)</b>	142	438	150	407
Male	115	339	108	311
Female	27	98	41	95
Unknown / Transgender	0	1	1	1
Urine	72	199	58	160
Genitourinary	14	54	26	58
Rectal and/or Pharyngeal	38	125	42	116
Unknown/Missing	18	60	24	73
<b>Early Syphilis (total)<sup>1</sup></b>	23	70	28	74
Male	22	67	25	68
Female	1	1	3	6
Transgender/Unknown	0	2	0	0
<b>Syphilis (total)</b>	33	108	40	116
Primary	6	14	5	9
Secondary	5	25	13	36
Early Latent	12	31	10	29
Late Latent	10	38	12	41
Congenital	0	0	0	1
Neurosyphilis <sup>2</sup>	0	1	1	4

YTD: Year to Date. <sup>1</sup>Early Syphilis is defined as primary, secondary, and early latent <sup>2</sup>Cases not included in the total as neurosyphilis is a sequelae and not a stage; the neurosyphilis cases are captured under other syphilis stages.

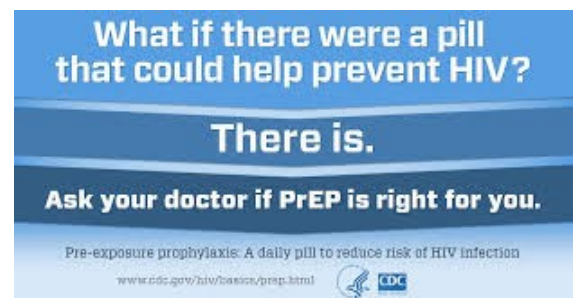
- CT has increased 10% in men and 4% in women compared to this time last year.
- GC cases have increased 9% in males and 3% in females since this time last year.
- Total syphilis cases decreased 7% and early syphilis cases decreased 5% compared to this time last year. In 2016, 9 of 108 syphilis cases (8%) were in females (data not shown).
- Health system HIV positive prevalence is 0.6% in 2016, which is decreased from 2015 (0.9%). New HIV cases identified at county clinics have decreased this year (0.7%) compared to 1.1 % in 2015.

**Table 2** HIV testing through the San Mateo County Health System by Quarter (Jul 1 - Sep 30) and Year to Date for 2016 and 2015<sup>1</sup>

	2016		2015	
	3rd Qtr	YTD	3rd Qtr	YTD
<b>Total Specimens Tested for HIV</b>	2,143	7,396	2,517	7,954
SMC-STD Clinic	162	607	202	649
STD/HIV Program Outreach <sup>2</sup>	245	791	319	866
Other County Clinics <sup>3</sup>	1,736	5,998	1,996	6,439
<b>Total HIV Antibody Positive</b>	15	47	21	74
SMC-STD Clinic	0	3	1	2
STD/HIV Program Outreach <sup>2</sup>	0	1	1	4
Other County Clinics <sup>3</sup>	15	43	19	68

<sup>1</sup>The HIV antibody positives do not reflect the true burden of disease. Some patients may be repeat testers. <sup>2</sup>Includes data from Testing on Demand and other STD/HIV program outreach. <sup>3</sup>Includes all HIV testing (oral and blood) at San Mateo Medical Center (SMMC), SMMC Satellite Clinics, SMC Public Health (PH) Clinics, and PH Subcontractors. Beginning Aug 2015, a 4th generation HIV screening test was implemented. HIV positive cases may not yet be confirmed by HIV-1/HIV-2 differentiation immunoassay.

## HIV Pre-exposure Prophylaxis (PrEP) Referrals for MSM with Rectal GC or Early Syphilis



The SMC STD/HIV program will prioritize men who have sex with men (MSM) with early syphilis or rectal GC for HIV PrEP offers, based upon a King County, Washington pilot study.\* SMC disease investigators and outreach staff will make PrEP offers and assist in linking interested clients to SMC Health System PrEP services. We think HIV PrEP is an important prevention tool that is contributing to decreases we are seeing in HIV positive prevalence in San Mateo County and the bay area. More information on HIV PrEP available at:

<http://www.smchealth.org/general-information/pre-exposure-prophylaxis-prep>