

# RETURN TO SCHOOL/CHILDCARE/WORK<sup>1</sup> FOR PERSONS WITH SYMPTOMS OF COVID-19 AND NO EXPOSURE IN PRIOR 14 DAYS

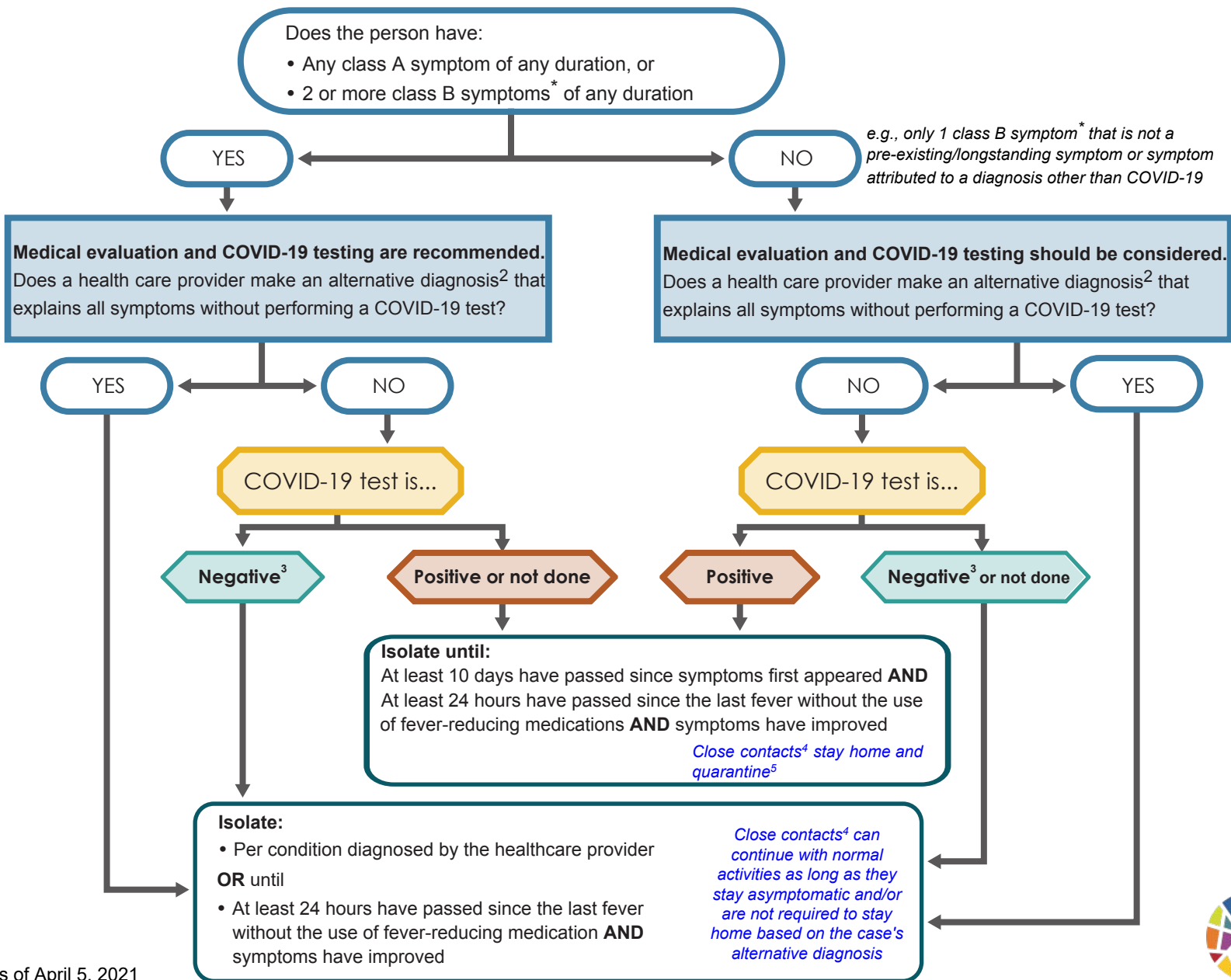
## Symptoms consistent with COVID-19

### Class A Symptoms:

- New loss of taste or smell (i.e., new olfactory or smell disorder)
- Painful purple or red lesions on the feet or swelling of the toes ("COVID Toes")
- Pneumonia (on clinical exam or imaging)
- Fever (temperature  $\geq 100.4^{\circ}\text{F}$  /  $38^{\circ}\text{C}$  or subjective fever)
- Cough (new or change in baseline)
- Shortness of breath or difficulty in breathing (new or change in baseline)

### Class B Symptoms\* excluding pre-existing/longstanding symptoms and/or symptoms that can be attributed to a diagnosis other than COVID-19:

- Chills
- Repeated shaking with chills (rigors)
- Chest pain with deep breathing
- Sore throat
- Hoarseness
- Runny nose or congestion
- Malaise or fatigue
- Abdominal pain
- Loss of appetite
- Nausea
- Vomiting
- Diarrhea
- Headache
- Altered mental status (e.g., confusion)
- Conjunctivitis or "pink eye"
- Rash
- Muscle pain (myalgias)



<sup>1</sup>Please note that this guidance does not apply to healthcare workers. Refer to the [Healthcare Workers Return to Work Criteria](#).

<sup>2</sup>Examples of alternative diagnosis include childhood rash illness, acute otitis media, or a laboratory-confirmed diagnosis such as strep throat or non-COVID-19 viral pathogen. Testing for other viral pathogens (e.g., influenza) is strongly recommended.

<sup>3</sup>In symptomatic persons, a negative antigen test should be confirmed with a PCR test. See the [CDPH Guidance on the Use of Antigen Tests for Diagnosis of Acute COVID-19](#).

<sup>4</sup>A close contact is someone who was within 6 feet of a person with COVID-19 for at least 15 cumulative minutes while the case was infectious whether or not face coverings were worn. Please note that cases are considered infectious starting 2 days before developing symptoms or, for asymptomatic cases, 2 days prior to the date of their positive test.

<sup>5</sup>Close contacts of confirmed COVID-19 cases should remain in quarantine for a full **14 days** after the date of last exposure. If ongoing contact between the case and the contact is unavoidable, then quarantine should be extended through 14 days after the date the COVID-19 positive case completes his/her isolation. See the [Home Isolation and Quarantine Instructions](#).