



Seasonal Influenza Report 2016-17

San Mateo County Health System, Public Health Policy and Planning
Weeks 46 & 47 (Nov. 13 to 26, 2016)

www.smchealth.org/flu · Provider Reporting: 650.573.2346 · 650.573.2919 (fax)

Volume 9, Issue 4

Catherine Sallenave MD, CD Controller · Moon Choi, Epidemiologist · Scott Morrow MD, MPH, Health Officer

Current Influenza Activity

San Mateo County

- During week 47 (ending 11/26/16), San Mateo County reported minimal influenza activity.
- Week 47 of the current season had slightly more influenza detections than week 47 of the previous season (Figures 1 and 2).
- Within the County, based on laboratory reports from reporting county and hospital laboratories*, a total of 821 specimens have been tested for influenza since the beginning of influenza season, with 28 (3.4%) testing positive. A total of 157 specimens have been tested for RSV since the beginning of the influenza season, with four (2.5%) testing positive (Figures 1, 3, and 4).
- San Mateo County Public Health Laboratory (SMC PHL) has the ability to further subtype positive influenza specimens; two of the positive specimens were H3 in week 46. No specimens were subtyped in week 47.
- Influenza-like illness (ILI) surveillance of chief complaint data from San Mateo Medical Center ED shows increased activity from the same period last season (Figure 5).

California

- Influenza activity in California was "sporadic" during week 47.
- Of 2,081 specimens tested in week 47, 100 (4.8%) tested positive for influenza. Of these positive specimens, 94 (94.0%) tested positive for influenza A, of which seven were H3 (7.4%) and 87 (92.6%) were not subtyped. The six (6.0%) remaining positive specimens tested positive for influenza B.
- Outpatient visits for ILI were 1.3% of patient visits during week 47, which is within expected levels for this time of year.
- There were no laboratory-confirmed outbreaks during weeks 46 and 47.
- Hospital visits for Pneumonia and Influenza (P&I) for week 47 was higher (4.1%) than week 46 (4.0%) but within expected levels for this time of year.†

United States

- During week 47, influenza activity remained low in the United States.
- Of the 14,787 specimens tested by clinical laboratories, 525 (3.6%) were positive for influenza, of which 372 (70.9%) were influenza A and 153 (29.1%) were influenza B.†
- Of the 541 specimens tested by public health laboratories, 62 (11.5%) were positive for influenza. Of the positive specimens, 54 (87.1%) were influenza A, of which two (3.7%) were 2009 H1N1, 31 (57.4%) were H3, and 21 (38.9%) were not subtyped. Of the remaining positive specimens, eight (12.9%) were influenza B, of which one (12.5%) was of Yamagata lineage and the remaining seven (87.5%) did not have lineage performed.
- During week 45, 5.2% of all deaths reported through the National Center for Health Statistics Mortality Surveillance System were due to Pneumonia and Influenza (P&I)‡, below the epidemic threshold of 6.9% for week 45. Due to a backlog of records, this was the most recent data to date.
- No influenza-associated pediatric deaths were reported during week 47.
- During week 47, 1.8% of patient visits reported through the U.S. Outpatient Influenza-like Illness Surveillance Network (ILINet) were due to ILI. This is below the national baseline of 2.2%.
- One state (GA) experienced moderate ILI activity; five states (MS, NC, OK, SC, VA) experienced low ILI activity; the remaining 44 states experienced minimal ILI activity.

Figure 2

Number of Positive Influenza Tests by Type and Week, San Mateo County, 2015-17

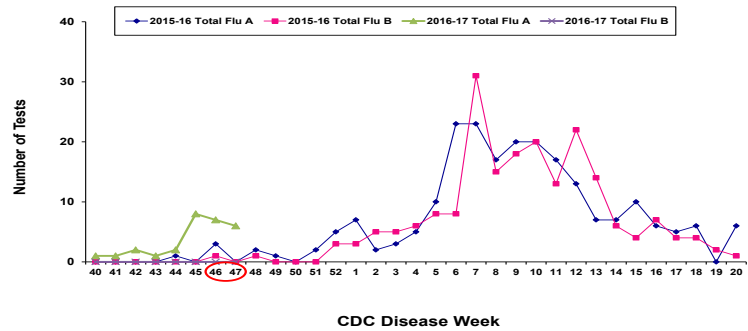


Figure 3

Percentage of Positive Respiratory Syncytial Virus (RSV) Specimens from Reporting Labs San Mateo County, 2015-17

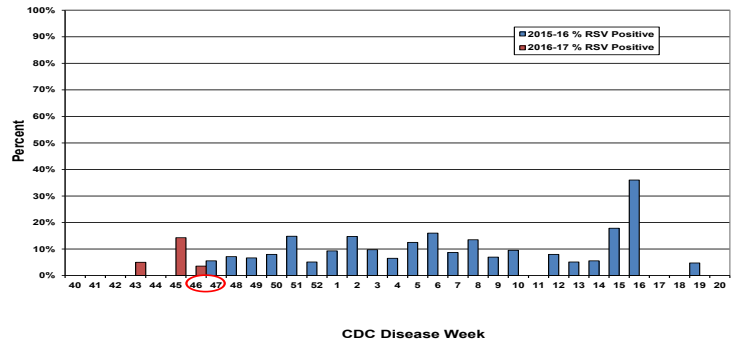


Figure 4

Percentage of Positive Influenza Specimens from Reporting Labs San Mateo County, 2015-17

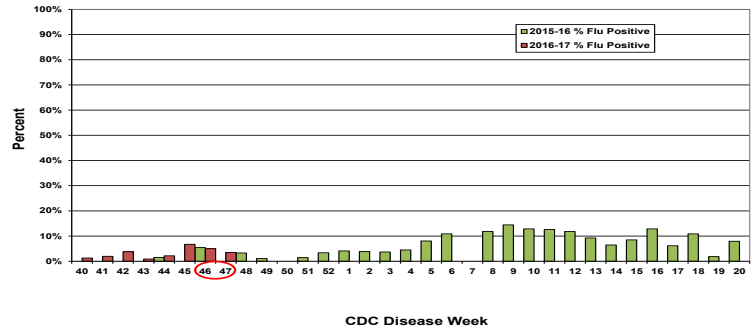


Figure 5

Proportion of Influenza-like Illness Visits (ILI): San Mateo County Medical Center ED, 2015-17 Influenza Seasons

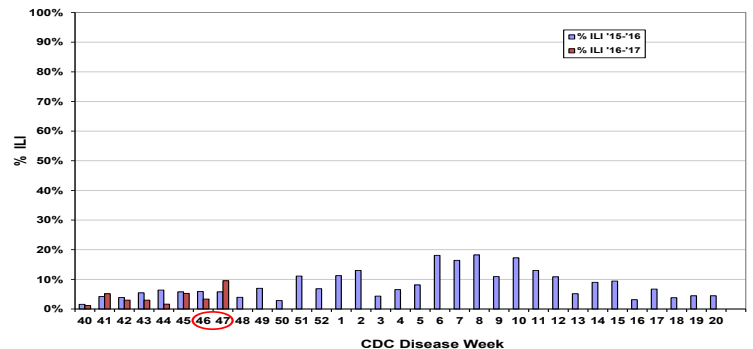
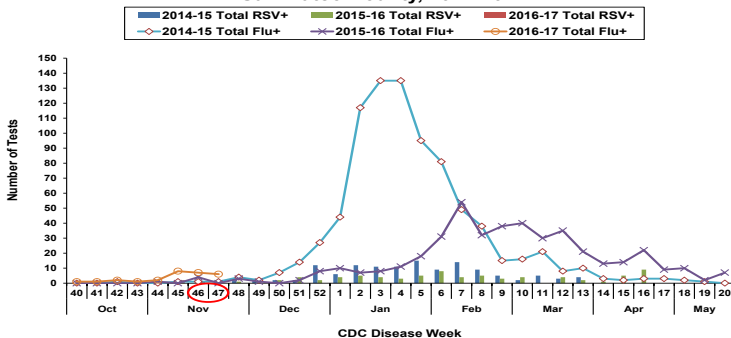


Figure 1

Number of Positive Influenza & RSV Tests by Week San Mateo County, 2014-2017



*Our reported numbers do not represent all cases of influenza within SMC, but are intended to demonstrate trends in influenza activity. This issue does not represent data from Kaiser.
Sources: SMC: San Mateo Medical Center, Sequoia Hospital, Mills-Peninsula Hospital, San Mateo County Public Health Laboratory; CA: California Influenza Surveillance Project: <http://www.cdph.ca.gov/PROGRAMS/DCDC/Pages/CaliforniaInfluenzaSurveillanceProject.aspx>; US: CDC Influenza Activity and Surveillance: <http://www.cdc.gov/flu/weekly/fluactivitysurv.htm>

†This data reflects Kaiser hospitalizations only.
‡The CDC notes: "P&I percentages for recent weeks may be artificially low due to a backlog of records requiring manual processing. Percentages will likely increase to levels more similar to the baseline as more data becomes available."