

# San Mateo County Emergency Medical Services Smoke Inhalation Injury

For patients with smoke inhalation

## History

- Number and severity of other victims
- Industrial or residential fire
- Duration of inhalation
- Social history - smoking
- Past medical history
- Other trauma
- Odor

## Signs and Symptoms

- Facial burns, pain, and/or swelling
- Cherry red skin
- Loss of consciousness
- Hypotension/shock
- Airway compromise/distress could be indicated by hoarseness/wheezing
- Seizure/AMS after industrial or closed space fire consider cyanide poisoning

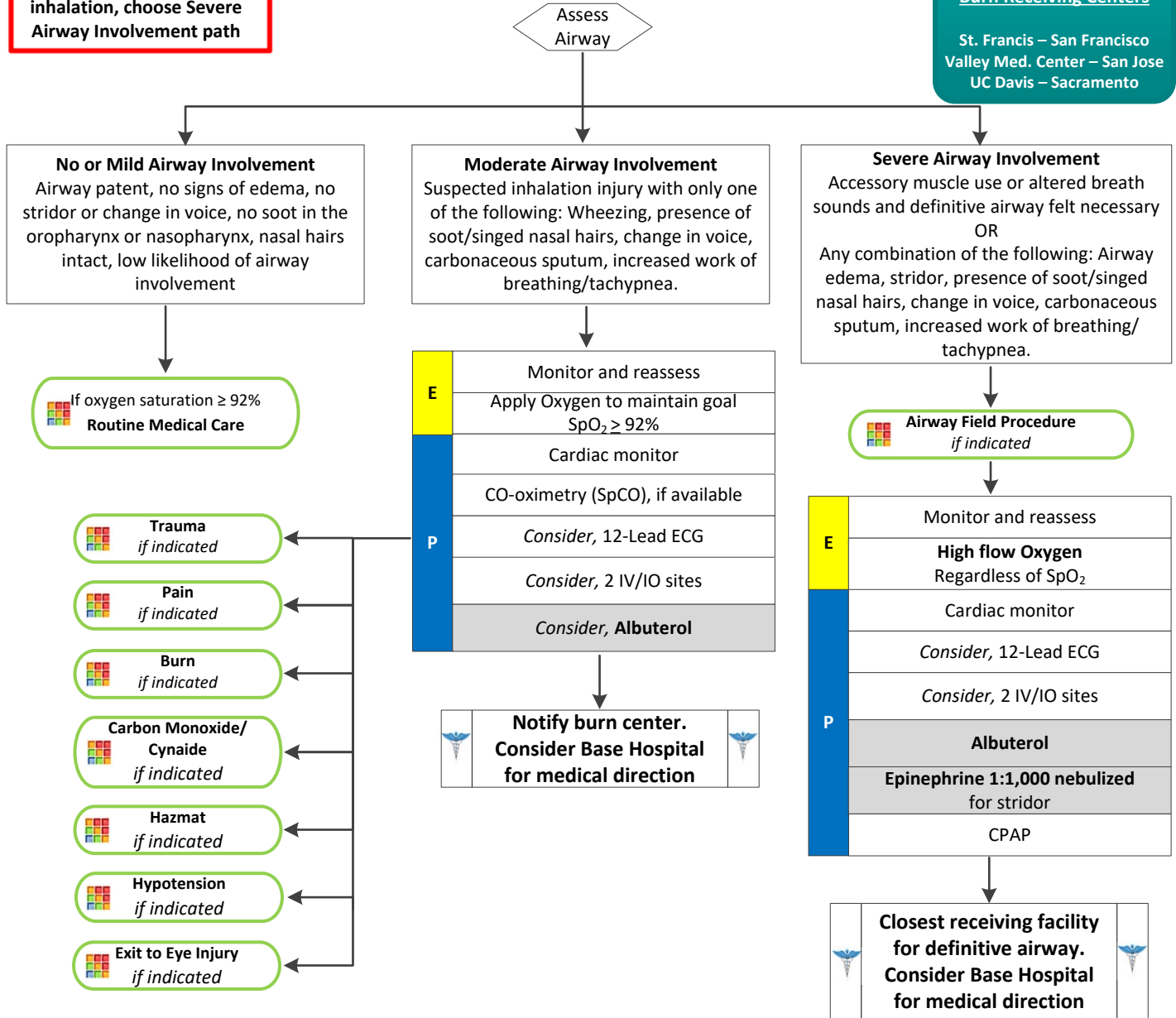
## Differential

- Foreign Body Aspiration
- Asthma exacerbation
- COPD exacerbation
- Cyanide poisoning
- Carbon monoxide poisoning
- Thermal injury
- Heart failure
- Acute respiratory distress syndrome

**For suspected closed space inhalation, choose Severe Airway Involvement path**

## Approved Burn Receiving Centers

St. Francis – San Francisco  
Valley Med. Center – San Jose  
UC Davis – Sacramento



Adult Respiratory Distress Treatment Protocols

# Smoke Inhalation Injury

For patients with smoke inhalation

## Pearls

- Ensure patient is properly decontaminated before placing in ambulance and transport to hospital.
- Contact Hazmat or Poison Control Center with questions about chemical or guidance on immediate treatment.
- If able, obtain the name of chemical(s) patient was exposed to pass information along to receiving hospital staff.
- If able, remove patient's clothing before placing in ambulance and transport to hospital.

