



POLICY NO:	OPS - 32
DATE ISSUED:	9/2016
DATE TO BE REVIEWED:	9/2018

## ASSESSMENT AND DISPOSITION OF INEBRIATE PATIENTS

---

### Purpose:

1. To establish policy and procedures to guide in the assessment and transportation of extremely intoxicated patients presenting to Law Enforcement or the 911 system in San Mateo County
2. Provide for a safe discharge plan for these patients
3. Prevent unnecessary placement of a 5150 hold on patients who are intoxicated without additional psychiatric complaint.

**Authority:** Health and Safety Code Division 2.5, Section 1797.204. California Penal Code 647(f) PC-Drunk in Public. Welfare and Institutions Code 5150 W&I – Mental Health Involuntary Detention.

### Definitions:

1. Drunk in Public (CA Penal Code 647(f)): a person who is found in any public place under the influence of intoxicating liquor, any drug, controlled substance, or toluene, or any combination of any intoxicating liquor, drug, controlled substance, or toluene, in a condition that he or she is unable to exercise care for his or her own safety or the safety of others, or by reason of his or her being under the influence of intoxicating liquor, any drug, controlled substance, toluene, or any combination of any intoxicating liquor, drug, controlled substance, or toluene, interferes with or obstructs or prevents the free use of any street, sidewalk, or other public way.
2. Patient: Patients with a primary problem of alcohol intoxication who, due to the severity of their intoxication, require transportation by ambulance to a hospital emergency department.
3. Mental Health Involuntary Detention (W&I Code 5150): When any person, as a result of mental disorder, is a danger, to others, or to himself or herself, or gravely disabled, a peace officer, member of the attending staff, as defined by regulation of an evaluation facility designated by the county, designating members of a mobile crisis team provided by Section 5651.7 or other professional person designated by the county may, upon probable cause, take or cause to be taken into custody and place in a facility designed by the county and approved by the State Department of Mental Health as a facility for 72-hour hold treatments and evaluation.

APPROVED:

Nancy A. Lapolla, MPH, EMS Director

Greg H. Gilbert, MD, EMS Medical Director

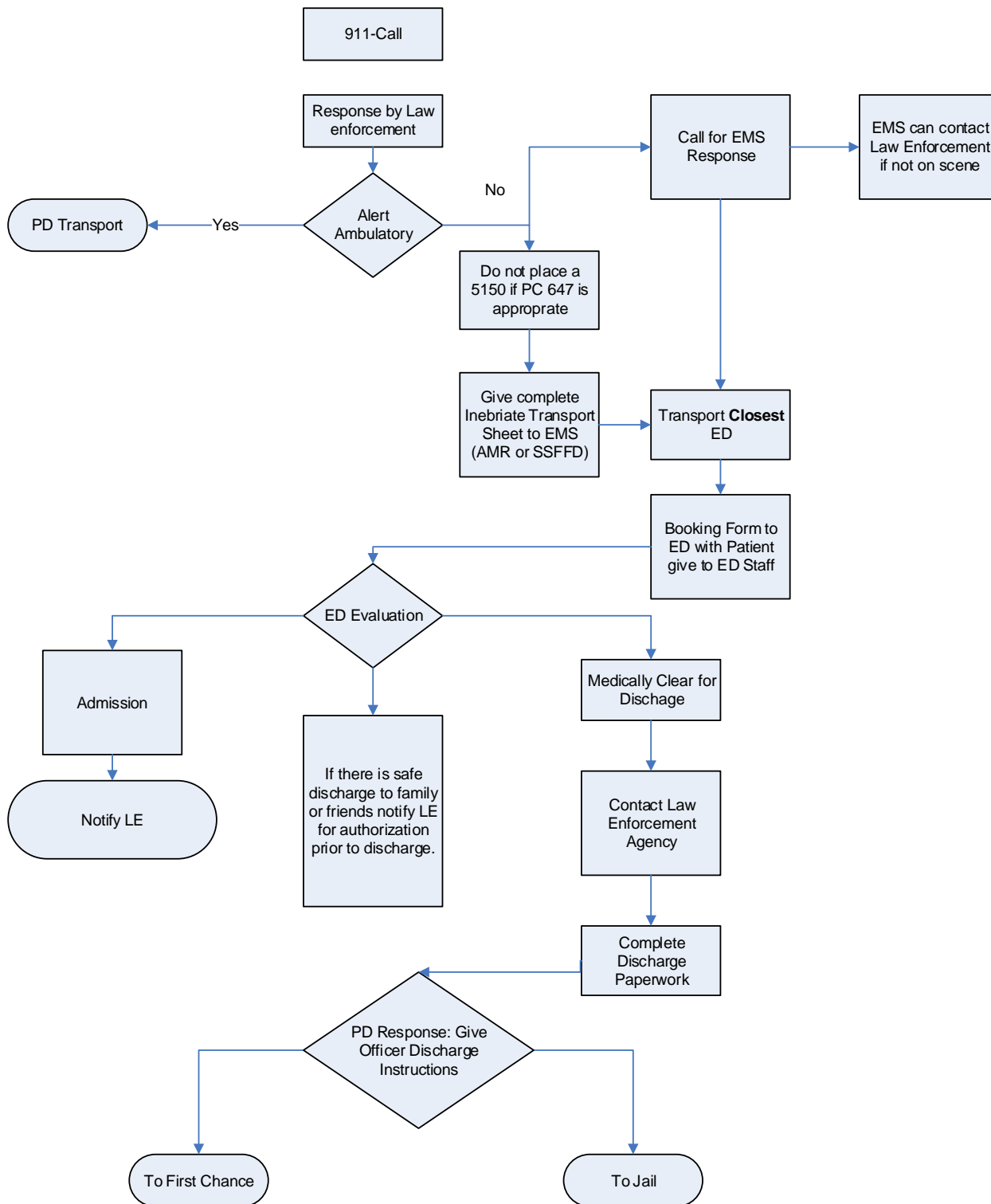
**Procedure:**

Law Enforcement (LE) and EMS:

1. When 911 is contacted, LE at scene will determine with the responding EMS crew if the patient is capable of ambulating or can speak coherently.
2. If the patient's apparent complaint is intoxication with alcohol, drugs, controlled substances or toluene and is not capable of ambulating, and requires medical clearance, LE will complete the "Inebriate Transportation Sheet".
3. The "Inebriate Transportation Sheet" will be given to the transporting paramedic and the patient will be transported to the closest emergency department.
4. The paramedic will give the "Inebriate Transportation Form" to the emergency department charge nurse.
5. **A 5150 will not be written by the law enforcement officer if the obvious primary cause for EMS transportation is alcohol and/or drug intoxication.**
6. If the patient is ambulatory, then law enforcement should transport the patient without requesting 911. The patient will be transported to the closest ED if medical clearance is needed or to the facility (detoxification or incarceration) of the officer's choice.

Emergency Department (ED):

1. Paramedics will give the "Inebriate Transportation Sheet" to the emergency department charge nurse.
2. The ED will need to have access to the information prior to the patient's disposition so the arresting agency can be contacted.
3. If this patient chronically presents to the hospital in an inebriated state, consider contacting LE for referral to the Crisis Team.
4. If the patient is to be admitted, hospital staff will contact the LE by phone – this will allow LE to close the case.
5. If the patient is to be discharged contact LE, so LE can respond and take custody of patient. LE will determine if the patient is appropriate for First Chance or will be transported by the officer to jail. The patient's discharge instructions should be given to the officer.
6. If the patient is insistent on leaving the ED do not interfere, contact LE agency as soon as possible to notify them of the situation.
7. If safe discharge to family or friends is available, contact LE prior to discharge to obtain the LE's authorization. LE will likely release the patient. This is a civil charge, not a criminal charge and the officer does not have to be present to authorize release.





## INEBRIATE TRANSPORT SHEET

(Official Use Only)

**Law Enforcement (LE):**

1. LE shall complete the "Inebriate Transport Sheet" for all inebriated individuals with EMS transport.
2. Yellow (back) copy of completed "Inebriate Transportation Sheet" will be given to EMS transport; white copy remains with LE.
3. LE shall be notified by ED following patient medical clearance, and prior to release.

**Emergency Department (ED) and EMS:**

1. EMS will transport patient to the closest ED.
2. Paramedics shall provide "Inebriate Transportation Sheet" yellow copy to the ED charge nurse upon arrival.
3. ED shall notify LE following patient medical clearance, and prior to release.

PATIENT INFORMATION	LAST NAME		FIRST NAME			M.I.	SUFFIX	SMCSO ID#
	A.K.A.S (OTHER NAMES USED/KNOWN BY – MONIKERS, STREET NAMES, ETC.)							
	ADDRESS - NUMBER, STREET NAME			TYPE	UNIT #	CITY, STATE	ZIP	TELEPHONE
	EMERGENCY CONTACT NAME – Last, First					RELATIONSHIP		TELEPHONE
	LOCATION OF INCIDENT						DATE	TIME
	HOSPITAL TRANSPORTED TO							
LAW CONTACT	LAW ENFORCMENT AGENCY AND LOCATION						TELEPHONE	
	OFFICER LAST NAME			FIRST NAME			M.I.	BADGE NO
	NOTES							

**\*\*ED SHALL CONTACT LE FOLLOWING PATIENT MEDICAL CLEARANCE, AND PRIOR TO RELEASE\*\***

INDIVIDUAL DISPOSITION	DATE/APPROX. TIME OF MED. CLEARANCE	DISPOSITION FOLLOWING MEDICAL CLEARANCE	
		<input type="checkbox"/> LE CUSTODY	<input type="checkbox"/> FAMILY/SELF
NOTES			

**\*\*1 COPY LAW ENFORCEMENT (WHITE) – 1 COPY HOSPITAL (YELLOW)\*\***