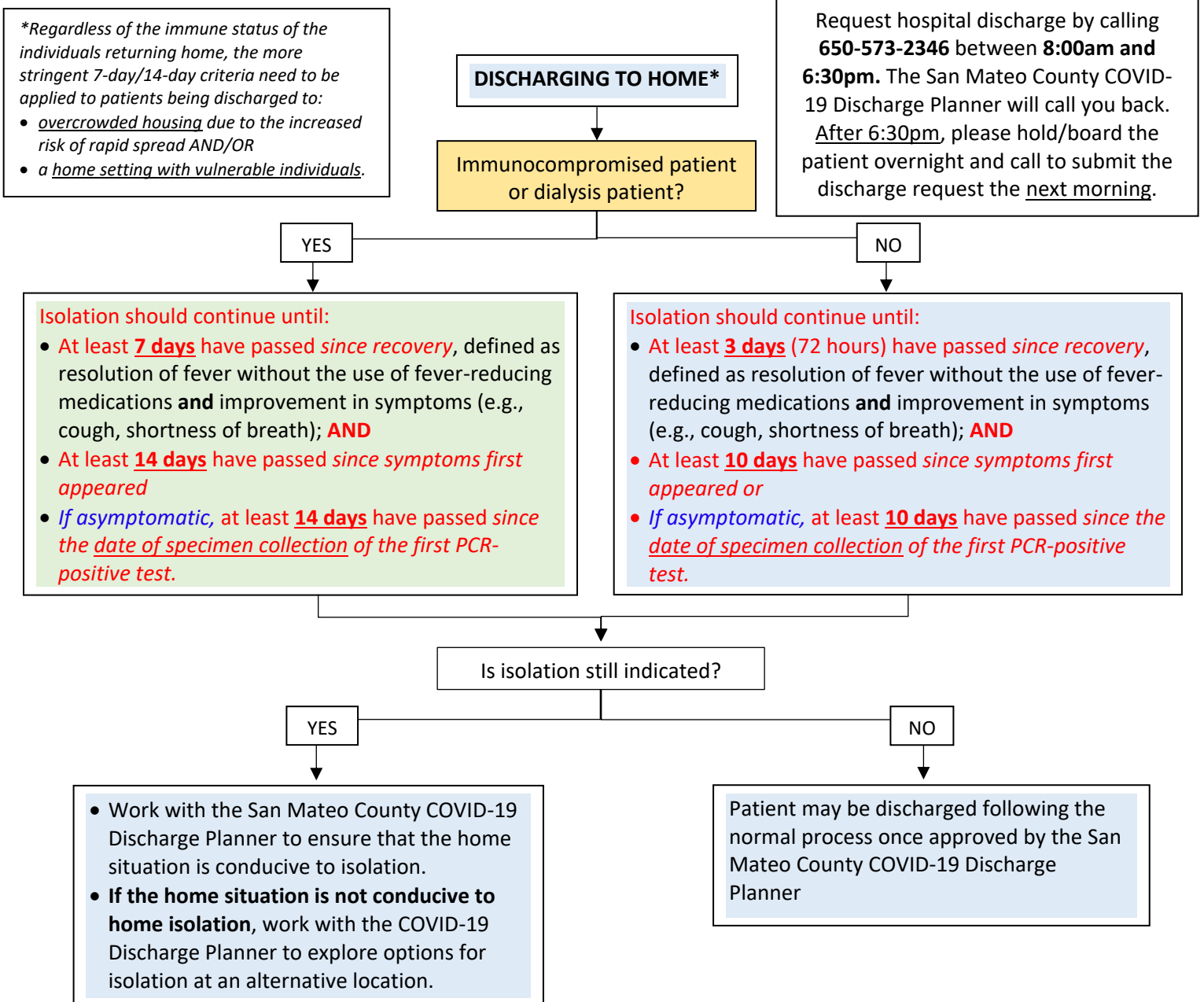




## COVID-19 Hospital Discharge Criteria

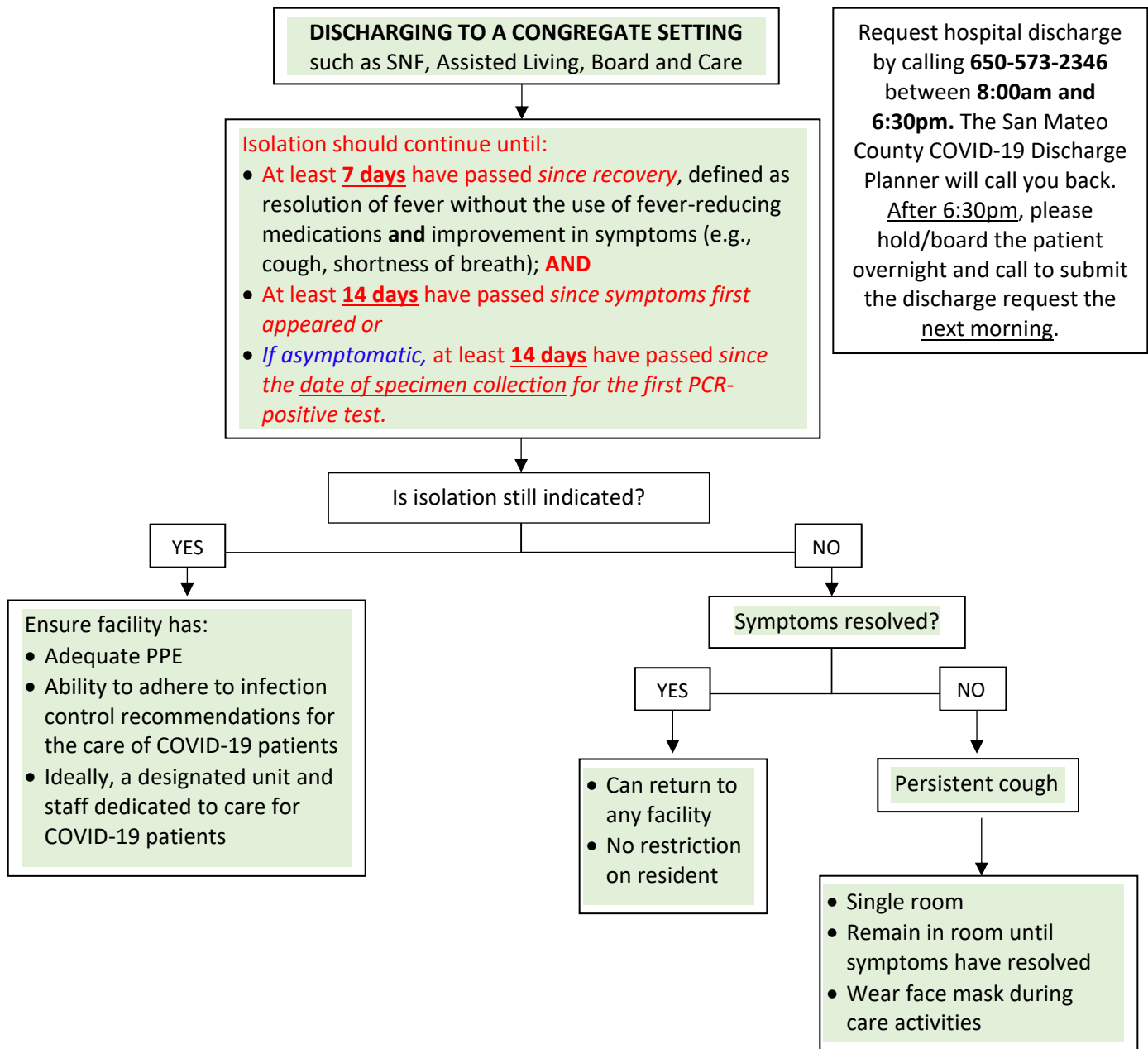
- Individuals who are medically stable may be discharged from the hospital while still infectious and requiring isolation and transmission-based precautions. Close coordination is needed to prevent inadvertent exposures during this process.
- Criteria for discharge from hospital:
  - Patient is medically stable, per treating provider and able to recuperate outside of the hospital setting; **and**
  - Patient’s respiratory symptoms are improving; **and**
  - Ideally, patient has been fever-free for at least 24 hours without the use of antipyretics (e.g., Tylenol, NSAIDs, etc.) – Note: careful evaluation is needed for hospitalized patients as fever-reducing medications may be administered for unrelated reasons (e.g., arthritis) and for immunocompromised or elderly patients who may present with atypical symptoms and may not mount a fever; **and**
  - Appropriate housing, transportation, and wrap-around services (food, medication, basic needs such as clothing and toiletries, other necessities) are in place to maintain isolation/transmission-based precautions if still warranted.





## COVID-19 Hospital Discharge Criteria

- Individuals who are medically stable may be discharged from the hospital while still infectious and requiring isolation and transmission-based precautions. Close coordination is needed to prevent inadvertent exposures during this process.
- Criteria for discharge from hospital:
  - Patient is medically stable, per treating provider and able to recuperate outside of the hospital setting; **and**
  - Patient’s respiratory symptoms are improving; **and**
  - Ideally, patient has been fever-free for at least 24 hours without the use of antipyretics (e.g., Tylenol, NSAIDs, etc.) – Note: careful evaluation is needed for hospitalized patients as fever-reducing medications may be administered for unrelated reasons (e.g., arthritis) and for immunocompromised or elderly patients who may present with atypical symptoms and may not mount a fever; **and**
  - Appropriate housing, transportation, and wrap-around services (food, medication, basic needs such as clothing and toiletries, other necessities) are in place to maintain isolation/transmission-based precautions if still warranted.



Request hospital discharge by calling **650-573-2346** between **8:00am and 6:30pm**. The San Mateo County COVID-19 Discharge Planner will call you back. After 6:30pm, please hold/board the patient overnight and call to submit the discharge request the next morning.

