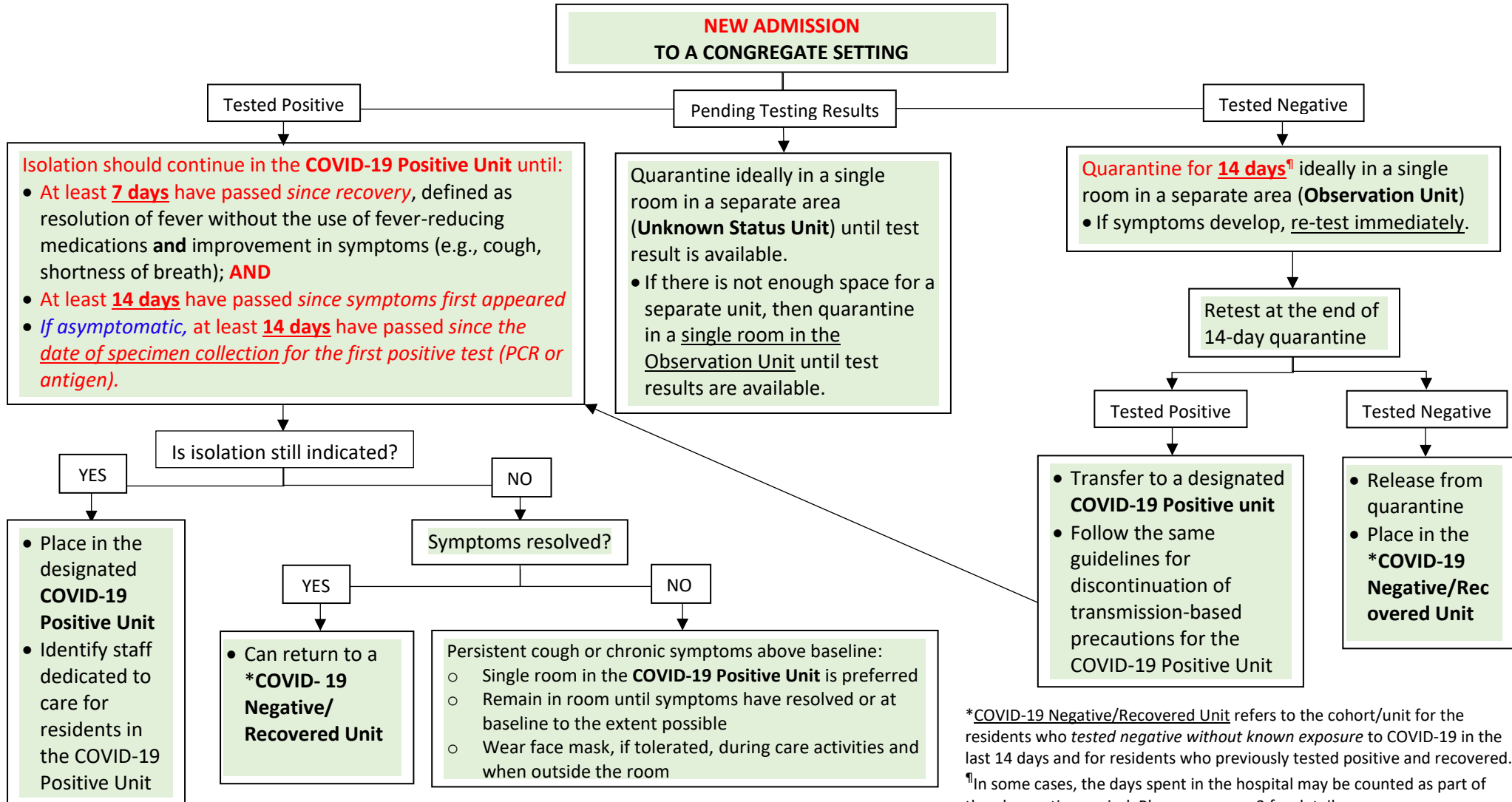


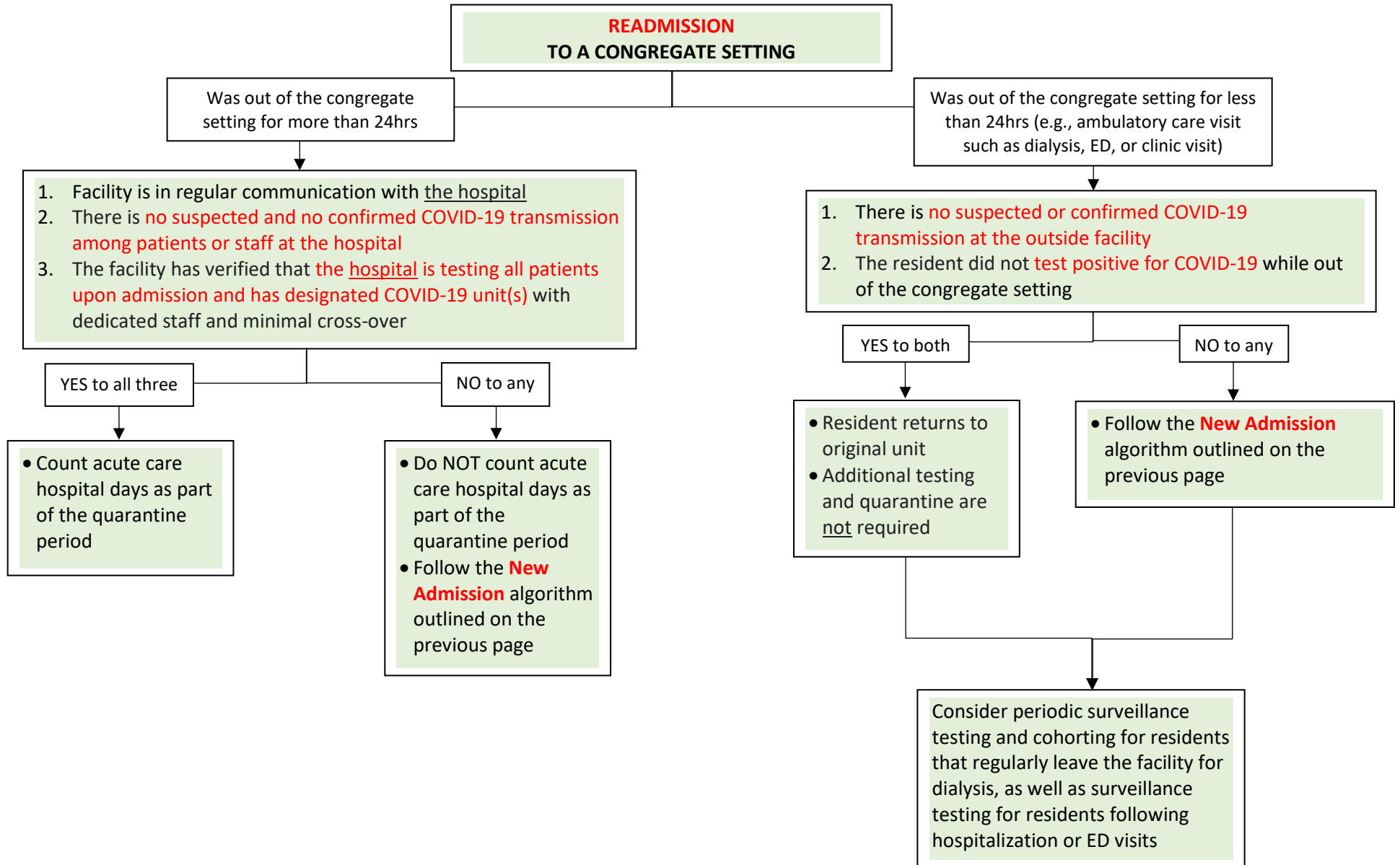
COVID-19 Congregate Setting Admission, Readmission, and Discontinuation of Transmission-Based Precautions Guidelines

- Individuals with COVID-19 who are medically stable may be transferred to congregate setting while still infectious and requiring isolation and transmission-based precautions.
- **Testing should be performed for residents prior to admission or readmission, including transfers from hospitals or other healthcare facilities.** If the hospital does not test the patient, the congregate setting must test and quarantine upon admission. Facilities may not require a negative test result to accept admission.



*COVID-19 Negative/Recovered Unit refers to the cohort/unit for the residents who tested negative without known exposure to COVID-19 in the last 14 days and for residents who previously tested positive and recovered.
¹In some cases, the days spent in the hospital may be counted as part of the observation period. Please see page 2 for details.

COVID-19 Congregate Setting Admission, Readmission, and Discontinuation of Transmission-Based Precautions Guidelines



COVID-19 Congregate Setting Admission, Readmission, and Discontinuation of Transmission-Based Precautions Guidelines

Resident Cohorting	COVID-19 Positive Unit	Unknown Status Unit	Observation Unit	COVID-19 Negative/ Recovered Unit
Placement Criteria	Residents with laboratory-confirmed COVID-19 (tested PCR or antigen positive for COVID-19) who have not met criteria for discontinuation of transmission-based precautions	<ul style="list-style-type: none"> - Residents with pending COVID-19 PCR or antigen test results - Residents who refuse COVID-19 testing 	Residents who tested PCR negative for COVID-19 at time of admission but were exposed within the last 14 days (e.g., new admissions and readmissions transferred from another facility)	<ul style="list-style-type: none"> - Residents who tested PCR negative for COVID-19 without a known exposure in the last 14 days - Residents who have recovered from COVID-19
Infection Control and Prevention Precautions	<ul style="list-style-type: none"> - This unit should be housed in a separate area (building, unit or wing) of the facility and have dedicated staff members who do not provide care for residents in other cohorts - Dedicated staff members in this unit should have separate break rooms and restrooms. These staff should remain separate from other staff members - To the extent possible, restrict access of ancillary personnel (e.g., dietary) to the unit - Assign dedicated environmental services (EVS) staff to work on this unit - Residents should wear a face mask, if tolerated, during care activities and when outside the room 	<ul style="list-style-type: none"> - Ideally, place resident in a single room in a separate area. If single room is not available in a separate area, place resident in a <u>single room in the Observation Unit</u> until testing results are available - Maintain transmission-based precautions for all residents on the unit - Residents should wear a face mask, if tolerated, during care activities and when outside the room 	<ul style="list-style-type: none"> - Ideally, place resident in a single room in a separate area - If single-bed rooms are not available, cohort those residents in the same room with at least 6 feet between beds and a privacy curtain drawn between them. If unable to separate beds by 6 feet, separate as far as possible, but no less than 3 feet apart - Maintain transmission-based precautions for all residents on the unit - Residents should wear a face mask, if tolerated, during care activities and when outside the room 	<ul style="list-style-type: none"> - Residents can be placed in a multi-resident room - Maintain standard precautions
Personal Protective Equipment (PPE) Recommended During Direct Patient Care	All recommended COVID-19 PPE, which includes a N-95 or higher-level respirator (or face mask if a respirator is not available), eye protection (i.e., goggles or a disposable face shield that covers the front and sides of the face), gown, and gloves	All recommended COVID-19 PPE	All recommended COVID-19 PPE	Face mask and gloves plus standard PPE based on care activities – i.e., may include gown and eye protection if anticipating splashes or if indicated based on multi-drug resistant organism (MDRO) status of resident