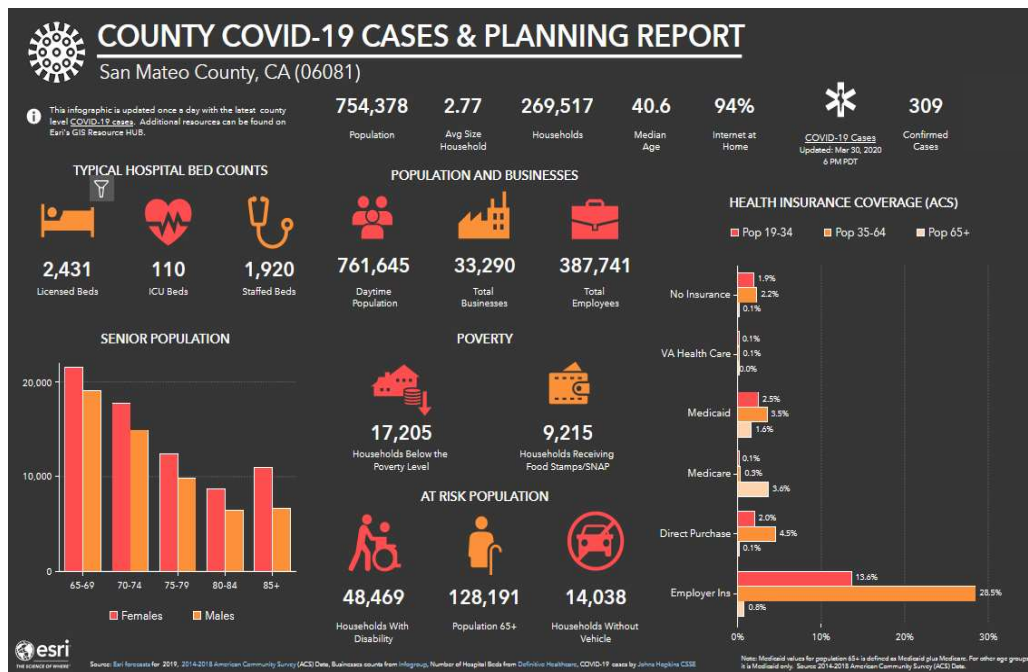


- COVID-19 data are reported as timely, accurately, and completely as we have available. Data are updated as we receive information that is more complete and will change over time as we learn more. Data reported as of 3/30.
- Due to the current testing capacity, the number of cases detected through testing represents only a small portion of the total number of likely cases in the County. This means the number of cases by age group is skewed toward those who are high risk and tested.
- Data from commercial and academic laboratories who report results to the California Reportable Disease Information Exchange (CaREDIE) are reflected in these data.



Source: ESRI forecasts for 2019, 2014-2018 American Community Survey (ACS) Data, Business count from Infogroup, Number of Hospital Beds from Definitive Healthcare, COVID-19 cases by John Hopkins CSSE