

Driving Under the Influence Programs

Behavioral Health Commission: AOD Committee
May 7, 2025

Presented by: Natalia Rojas



SAN MATEO COUNTY HEALTH

**BEHAVIORAL HEALTH
& RECOVERY SERVICES**

Purpose of Today

To obtain the Behavioral Health Commission's recommendation to support new Driving Under the Influence (DUI) Programs in San Mateo County.

Agenda

- Types of DUI services offered in San Mateo County
- DUI Program utilization and outcomes
- DUI Program unmet demand
- Current DUI Programs and service gaps
- Recommendation for new DUI programs in San Mateo County



DUI Participant Outcomes

DUI Participants Served

- FY 22/23 - 1191 clients served
- FY 23/24 - 984 clients served
 - 800 First Offenders,
 - 103 Multiple Offenders

DUI Participant Outcomes *(calendar year 2023)*

- MDUI Court served 180 clients, 128 resided in SMC
- Of the 128, only 45 were able to access MOP Services.
- 83 residents enrolled in programs outside of SMC, most of whom had no transportation

Client Demographics

- 75% of the 180 clients served in 2023 MDUI Court were employed
- 42% of the resident population in MDUI Court speak Spanish



SAN MATEO COUNTY HEALTH

**BEHAVIORAL HEALTH
& RECOVERY SERVICES**

Types of DUI Programs

*Call BHRS at 650-802-6400 for
information on DUI programs*

- Wet and Reckless: 12-hour education program
- First Offender Program
 - 3-month program : 32 hours
 - 6-month: 45 hour
 - 9-month: 62 hours
- Multiple Offender Program:
 - 12 month 71 hours
 - 18 month: 77 hours



SAN MATEO COUNTY HEALTH
**BEHAVIORAL HEALTH
& RECOVERY SERVICES**

Current DUI Provider Network

Current DUI Providers

Provider	Modalities
Free at Last Located in East Palo Alto	<ul style="list-style-type: none">• Wet/Reckless• FOP 3-month• Offered in English and Spanish• Virtual classes offered
Sitike Counseling Center Located in South San Francisco	<ul style="list-style-type: none">• Wet/Reckless• FOP 3-month• FOP 6-month• FOP 9-month• Offered in English and Spanish• Virtual classes offered

***As of 2/14/2024, there is no Multiple Offender Program in San Mateo County**



SAN MATEO COUNTY HEALTH

**BEHAVIORAL HEALTH
& RECOVERY SERVICES**

Client fees sliding scales

Program Type	Fees
Wet & Reckless	\$415
3-month (FOP)	\$794
6-month (FOP)	\$1267
9-month (FOP)	\$1696
12-month (MOP)	\$2024
18-month (MOP)	\$2191

* All fees are paid by clients

Impact of DUI Program Closures

OHS Closed in August 2020

- Was located in San Mateo
- At time of closure, had 364 active clients
- Offered FOP and MOP programs

Star-Vista Pyramid Closed on 2/14/2025

- Was located in Pacifica
- Offered all FOP programs, and MOP 18-month program
- At time of closure, had 273 active clients
 - 28 clients were transferred to Sitike for FOP programs.
 - 160 clients were transferred to MOP programs in other counties, the remaining 85 were transferred to out-of-county FOP or terminated.
 - Clients who had completed their program but were not able to finish paying by the time of closure could not transfer any credits and had to retake the course



SAN MATEO COUNTY HEALTH

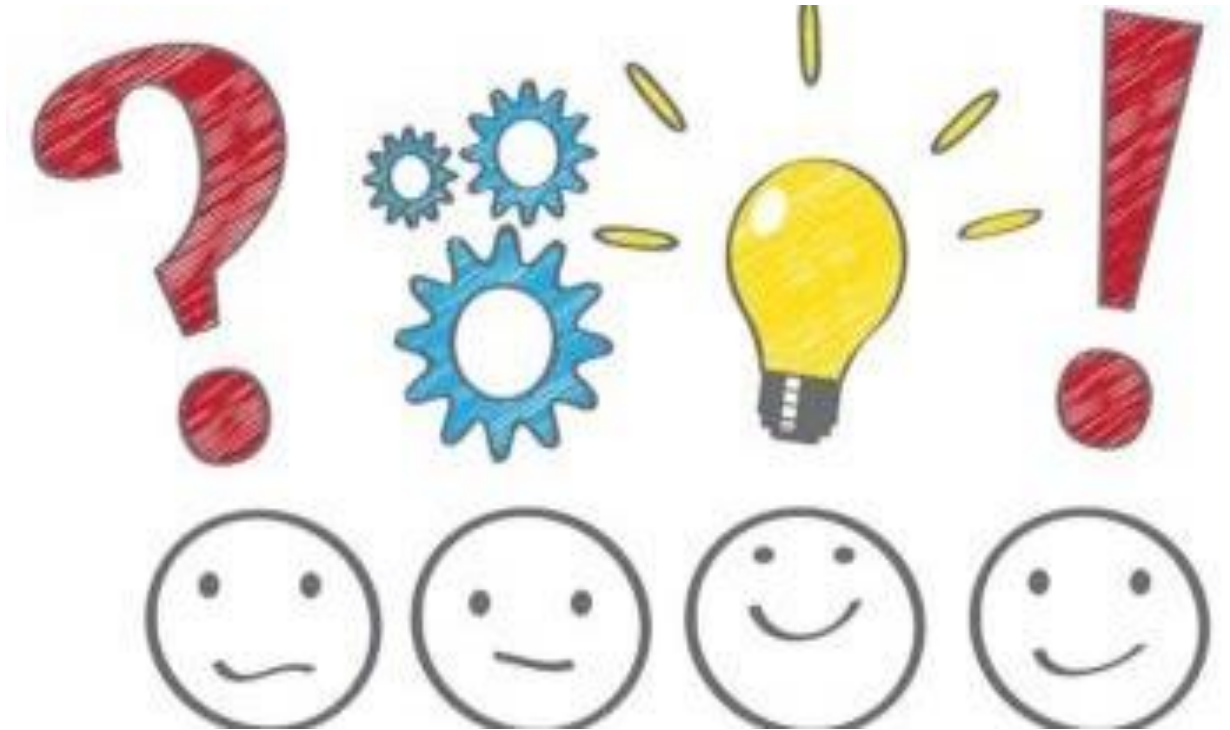
**BEHAVIORAL HEALTH
& RECOVERY SERVICES**

Recommendation for Licensure

- BHRS conducted an RFI in October of 2024
 - Two agencies were recommended for new services:
 - El Centro, for FOP and MOP services in Half Moon Bay and Redwood City
 - Sitike, for MOP services in South San Francisco (already offering FOP)
- To obtain a state license to provide these DUI services, the Board of Supervisors must recommend each agency for DUI licensure.
- BHRS AOD is recommending to the Board of Supervisors to expand the number of DUI providers in San Mateo County offering the above DUI programs.
- BHRS seeks the support of the BH Commission and the AOD Committee for these new agency services.

Thank you!

Comments or Questions?



[This Photo](#) by Unknown Author is licensed under [CC BY-SA](#)



SAN MATEO COUNTY HEALTH
**BEHAVIORAL HEALTH
& RECOVERY SERVICES**