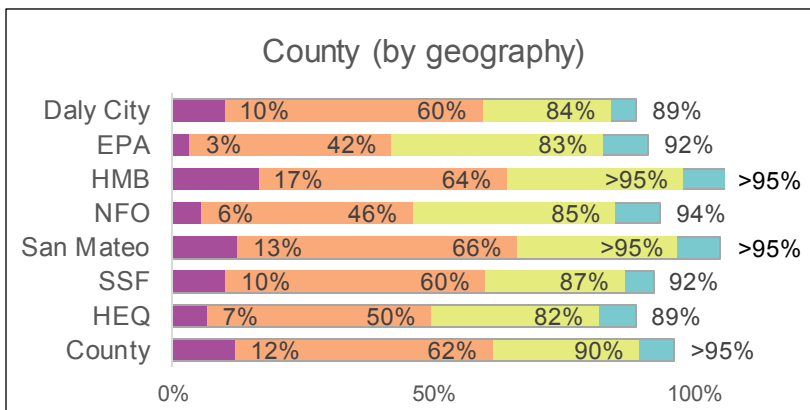
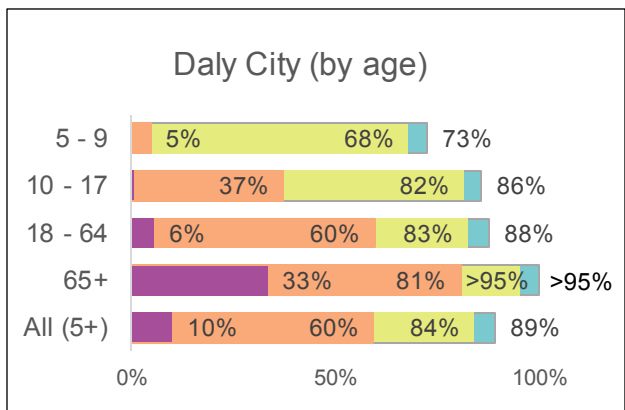


# DALY CITY

## VACCINATION RATES

Graphs cover data through 6/6/22



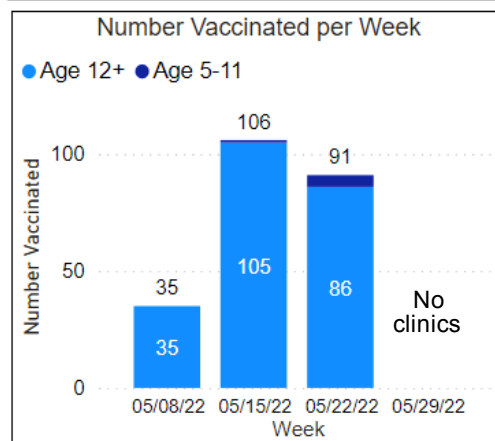
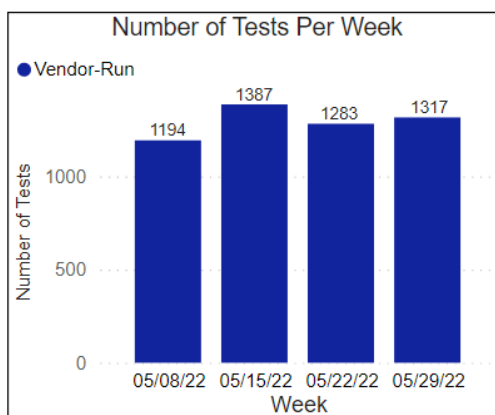
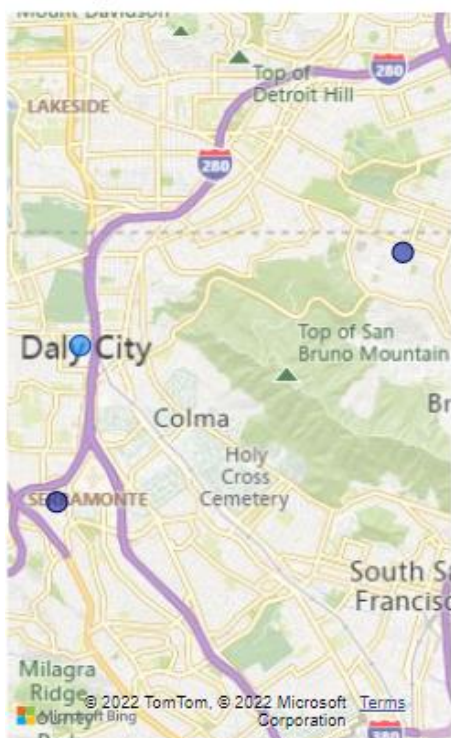
■ 2<sup>nd</sup> Booster 
 ■ 1<sup>st</sup> Additional/Booster 
 ■ Primary Series Complete 
 ■ 1+Dose

- Vaccination rates are capped at 95% due to limitations in data precision. County (by race/ethnicity) and County (by geography) graphs use different population denominator sources, resulting in different County vaccination rates. All rates are for 5 years old and up unless otherwise noted.
- Health Equity Quartile (HEQ) is comprised of the Healthy Places Index (HPI) quartiles within the County with the least healthy community conditions.

## COUNTY OPERATIONS

Graphs cover 5/8/22 – 6/4/22

● Testing 
 ● Vaccination



### Testing Sites

**Monday-Sunday, 9am-4pm**  
 Jefferson Union High School District  
 699 Serramonte Blvd, Daly City  
 Test Type: PCR  
 Test to Treat Site: No  
 Register at: <https://curative.com>

**Mondays, Friday, Saturday, 8am-8pm**  
 Bayshore Elementary School  
 155 Oriente St, Daly City  
 Test Type: PCR (walk-in), Antigen (via online registration)  
 Test to Treat Site: Yes  
 Register at: <https://lhi.care/covidtesting>

### Vaccination Sites

**Sundays, 10 am-3pm\***  
 Daly City Government Center  
 350 90<sup>th</sup> Street, Daly City  
 Age range: 5+  
 \*Closed on 6/19/22

- Vaccinations are also available for San Mateo Medical Center (SMMC) patients at SMMC clinics.

For general COVID questions, visit <https://covid19.ca.gov/vaccines/> or call the Public COVID-19 Call Center: (833) 422-4255 (Monday through Friday 8AM–8PM, Weekends 8AM–5PM)