

Refractory V-Fib/Pulseless V-Tach Mills Peninsula Pilot Program

History

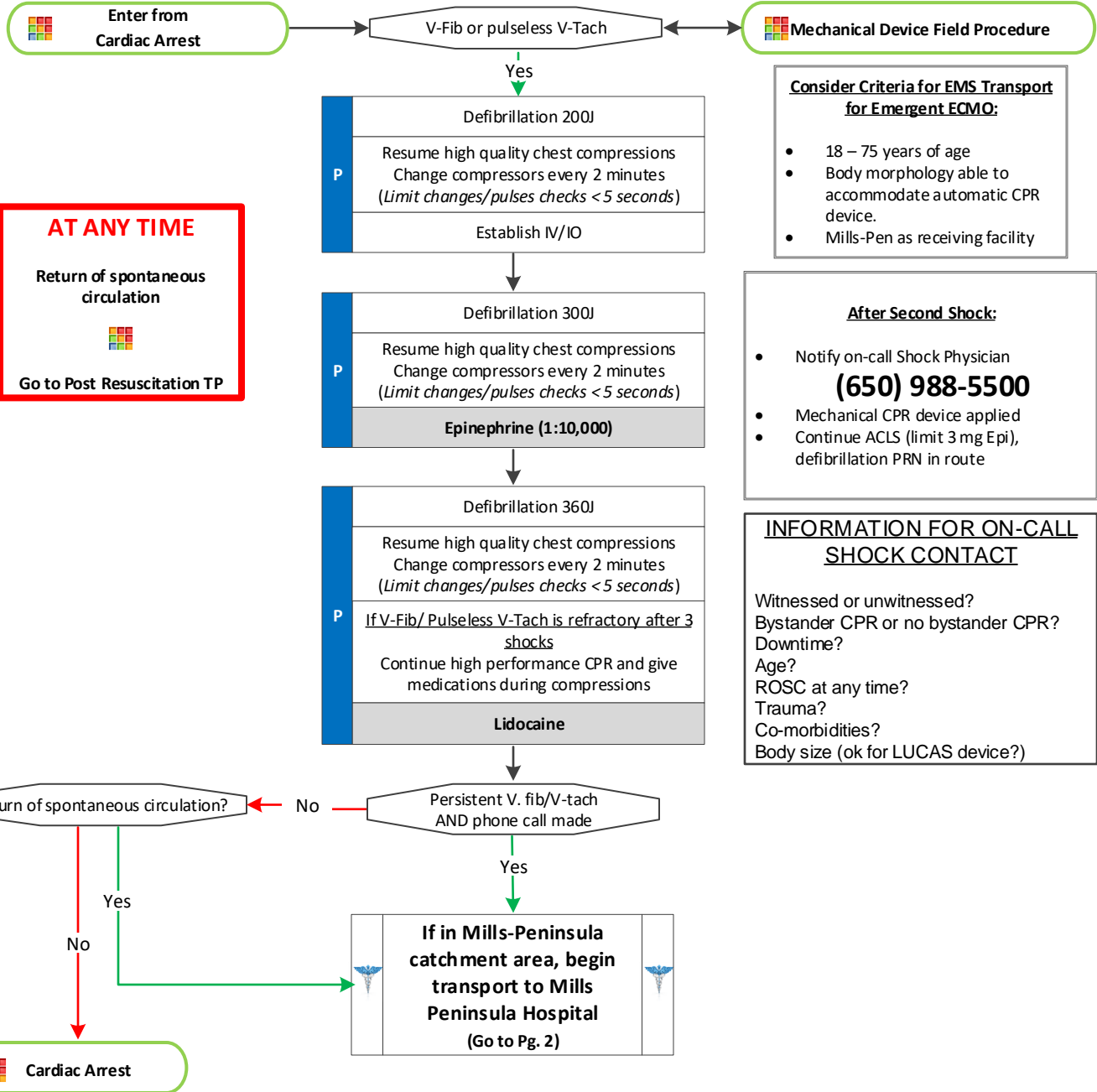
- Events leading to arrest
- Estimated downtime
- Prior resuscitation attempts
- Past medical history
- Medications
- Known terminal illness

Signs and Symptoms

- Pulseless
- Apneic

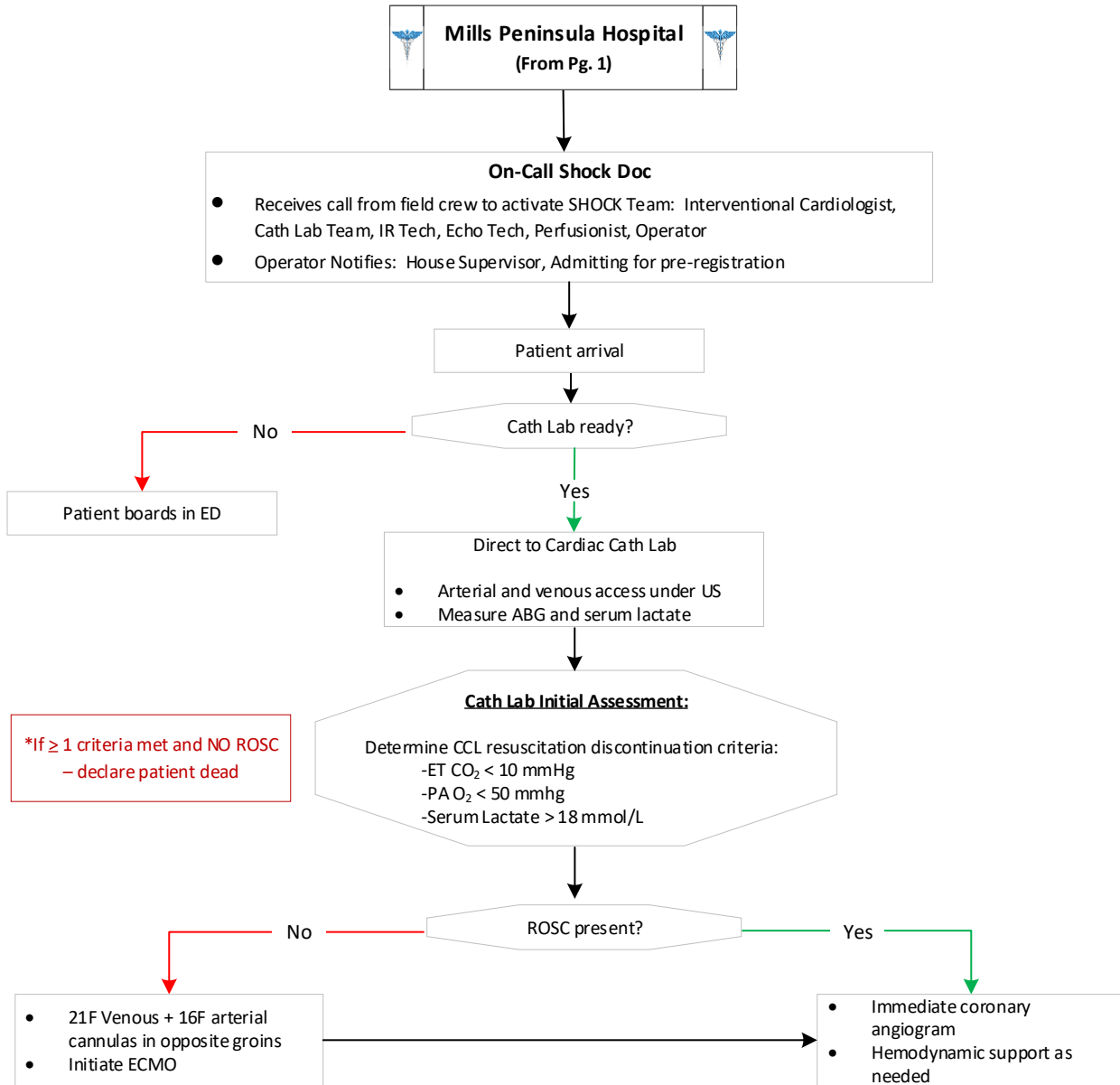
Differential

- Medical vs. trauma
- VF vs. pulseless VT
- Asystole
- PEA
- Primary cardiac event vs. respiratory arrest or drug overdose



Adult Cardiac Arrest – Non-traumatic Treatment Protocols

Refractory V-Fib/Pulseless V-Tach Mills Peninsula Pilot Program



Adult Cardiac Arrest – Non-traumatic Treatment Protocols

