

# V-Fib/Pulseless V-Tach

**History**

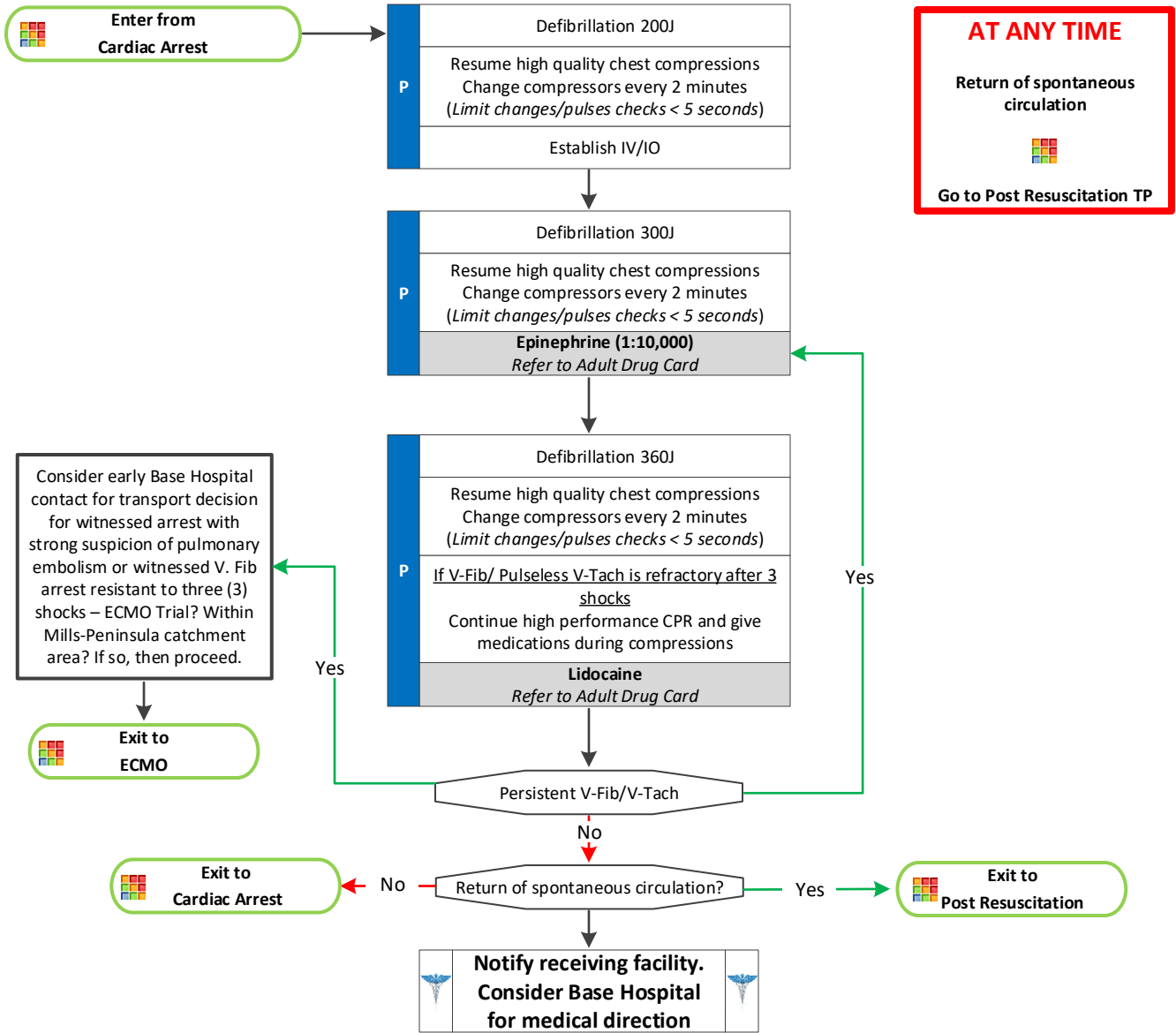
- Events leading to arrest
- Estimated downtime
- Prior resuscitation attempts
- Past medical history
- Medications
- Known terminal illness

**Signs and Symptoms**

- Pulseless
- Apneic

**Differential**

- Medical vs. trauma
- VF vs. pulseless VT
- Asystole
- PEA
- Primary cardiac event vs. respiratory arrest or drug overdose



Adult Cardiac Arrest – Non-traumatic Treatment Protocols

# Cardiac Arrest - V-Fib/Pulseless V-Tach

## Pearls

- For defibrillation or cardioversion, follow manufacturers recommendations.
- Efforts should be directed at high quality and continuous chest compressions with limited interruptions and early defibrillation when indicated. Consider early IO placement if available or direct IV access if anticipated.
- Assemble BVM with EtCO<sub>2</sub> and deliver ventilation with every 10<sup>th</sup> compression on the upstroke.
- Placement of an advanced airway should be deferred unless a provider is unable to ventilate the patient with a BLS airway and BVM.
- Use a metronome during chest compression to ensure proper rate.
- Provide resuscitative efforts on scene for 30 minutes to maximize chance of ROSC.
- Epinephrine in doses of greater than 3 mg has been shown to be detrimental to patient outcome.
- If resuscitative efforts do not attain ROSC, consider cessation of efforts per Operations 10 – Determination of Death.
- Do not interrupt chest compressions to place ETT.
- Consider breathing and airway management after second shock or two (2) rounds of chest compression (2 minutes each round).
- Effective chest compressions and prompt defibrillation are the keys to successful resuscitation.
- Reassess and document ETT placement and EtCO<sub>2</sub> frequently, after every move, and at transfer of care.
- Do not stop chest compressions to check for placement of ETT or to give medications.
- If the use of a BVM is ventilating the patient successfully, intubation should be deferred.
- In the setting of renal failure, dialysis, suspected DKA or hyperkalemia, calcium chloride followed by sodium bicarbonate shall be administered.

