

Be the one to help



Mental Health Service Act (MHSA) Steering Committee Meeting

Open to the public! Join advocates, providers, clients and family members to provide input on MHSA funded initiatives.

Meeting objectives include:

- Provide input on the Plan to Spend available one-time funds
- Learn about the MHSA Innovation ideas and provide input on the proposed projects:
 - PIONEER program for Pacific Islander college-age youth
 - Addiction Medicine Fellowship
 - Prevention and early intervention services in low-income housing
 - Preventing homelessness to economic and emotionally stressed older adults
 - Cultural arts and wellness-focused social enterprise cafe for Filipino/a/x youth

- ✓ Stipends are available for clients/family members
- ✓ Language interpretation is provided if needed*
- ✓ Childcare is provided if needed*
- ✓ Refreshments will be provided

**please contact Tania Perez at (650) 573-5047 or isperez@smcgov.org by September 25th, to reserve language/childcare services.*

DATE

Wednesday, October 2, 2019

3:30 pm – 4:00 pm (MHSARC)

4:00 pm – 5:30 pm (MHSA)

The MHSA Steering Committee is combined with the monthly Mental Health Substance Abuse and Recovery Commission (MHSARC) in March and October each year. The MHSA portion of the meeting begins at 4pm, both meetings are open to the public.

County Health Campus, Room 100

225 37th Avenue

San Mateo, CA 94403

Contact:

Doris Estremera, MHSA Manager
(650) 573-2889 ♦ mhsa@smcgov.org

www.smchealth.org/MHSA



SAN MATEO COUNTY HEALTH
**BEHAVIORAL HEALTH
& RECOVERY SERVICES**



Mental Health Services Act (MHSARC) Steering Committee

Wednesday, October 2, 2019 / 4:00 – 5:30 PM

County Health Campus, Room 100, 225 37th Ave. San Mateo, CA 94403

AGENDA

- 1. **Welcome & Background** 4:05pm
 - Doris Y. Estremera, MHSARC Manager

- 2. **MHSARC One-Time Funds - *Public Comments*** 4:10pm
 - Scott Gilman, Director of BHRS
 - Louise Rogers, Chief of County Health

MHSARC Motion:

Vote to open a 30-day public comment period for the
MHSARC Plan to Spend Available One-Time Funds

- 3. **MHSARC Innovations (INN) Breakout Activity - *Public Comments*** 4:40pm
 - Select 2 projects you want to learn about (20 min each)
 1. PIONEERS program for Pacific Islander college-age youth
 2. Addiction Medicine Fellowship
 3. Prevention and early intervention services in low-income housing
 4. Preventing homelessness to economic and emotionally stressed older adults
 5. Cultural arts and wellness-focused social enterprise café for Filipino/a/x youth

MHSARC Motion:

Vote to open a 30-day public comment period for the
MHSARC Innovation Project Proposals

- 4. **Adjourn** 5:30pm

Next Mental Health and Substance Abuse Recovery Commission (MHSARC) Meeting
Closing of 30-day public comment period for MHSARC Innovation Projects and Plan to Spend
Available One-Time Funds:

November 6, 2019 from 3:30-5:00pm
County Health Campus, Room 100, 225 37th Ave. San Mateo



 **Mental Health Services Act (MHSA)**
Steering Committee Meeting

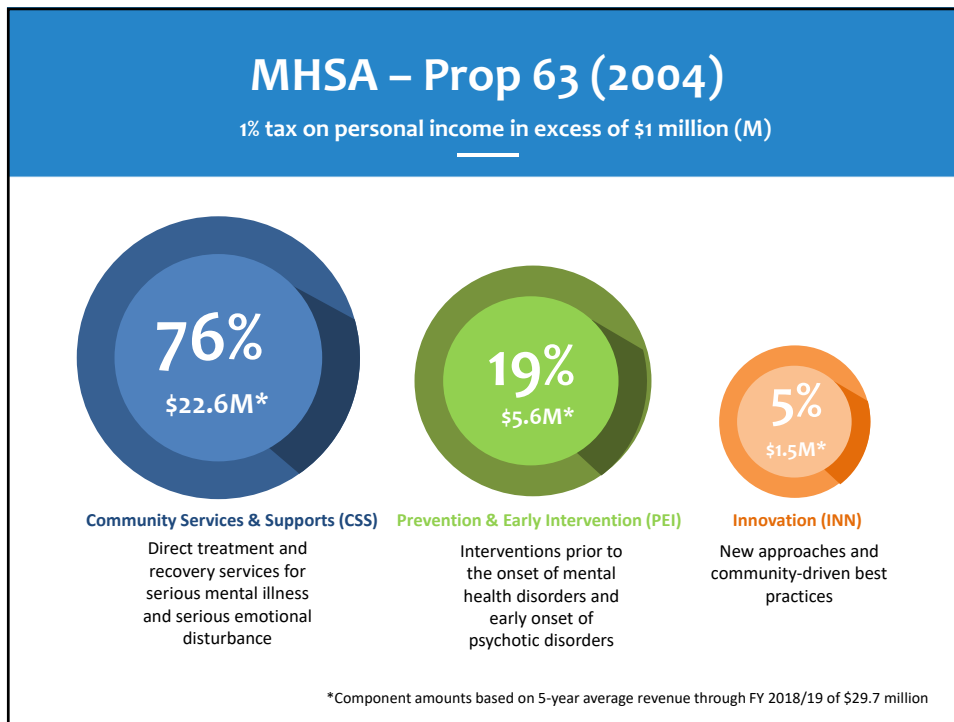
October 2, 2019 / 4- 5:30pm
www.smchealth.org/mhsa

  **SAN MATEO COUNTY HEALTH**
BEHAVIORAL HEALTH & RECOVERY SERVICES

Agenda

1. Welcome & Background
2. MHSA Plan to Spend One-time Funds & County Budget Update
 - ✓ MHSARC Motion
3. MHSA Innovations (INN) – Breakout Activity
 - ✓ MHSARC Motion
4. Adjourn





MHSA Reserves

- A Prudent Reserve is required to ensure counties' ability to serve clients should MHSA revenues drop.
- In January 2019, the San Mateo County MHSA Steering Committee discussed and approved a total reserve of 50% of the highest annual revenue
 - This total reserve includes the 33% (~\$7M) required Prudent Reserve + an additional operational reserve

San Mateo County MHSA Reserve	
Unspent*	\$35.7M
Reserve Goal	-\$16.5M
Obligated	-\$6.7M
Available One-Time	\$12.5 M

*as of FY 17/18

MHSARC Motion

- Vote to open a 30-day public comment period for the MHSARC Plan to Spend Available One-Time Funds



Plan to Spend One-Time Funds

- **Priorities :**
 - System improvement for MHA core services
 - Technology and Capital Facilities (IT/CF)
 - Workforce Training and Community Education/Awareness
 - Stop-gap for Innovation projects and BHRB budget reductions
- **Input:**
 - MHA Three-Year Plan Priorities
 - BHRB Budget Planning Stakeholder Meetings
 - April 2019 MHA Steering Committee – initial vetting
 - Additional Stakeholder Groups

Handout: 3-Year Plan to Spend \$12.5M Available One-Time Funds

County Budget Update

- **Health budget overview**
- **One-time allocation to support BHRB budget impacts**
 - \$1M for Cordilleras construction -Capital Facilities
 - \$4M for FSP/Clinic restructuring - System Improvement for Core MHA Services

Public Comments

- **Public comment forms are available here**
- **Can continue to provide public comments through November 6, 2019:**
 - Email: mhsa@smcgov.org
 - Phone: Doris Estremera, MHSA Manager (650) 573-2889
 - Mail: 310 Harbor Blvd, Bldg E, Belmont CA 94002.
 - Optional Public Comment Form available on line at www.smcgov.org/mhsa



MHSA Innovation

- MHSA Innovation: 3-5 year projects to develop new best practices
 - 35 ideas received, 20 reviewed by Selection Committee
 - Moving forward with 5 ideas



Handout: MHSA Innovation Ideas Prioritization

MHSARC Motion

- Vote to open a 30-day public comment period for the MHSA Innovation Project Proposals

Input Activity

- Select 2 projects you want to learn more about
 1. PIONEERS for Pacific Islander college-age youth
 2. Addiction Medicine Fellowship
 3. PEI services in low-income housing
 4. Preventing homelessness to economic and emotionally stressed older adults
 5. Cultural arts and wellness-focused social enterprise café for Filipino/a/x youth
- 10 min presentation, followed by 10 min Q&A
 - Provide public comment during the Q&A or in writing using the Public Comment form



Thank you!

For more information:
www.smchealth.org/MHSA
 Doris Estremera, MHSA
 Manager
 (650) 573-2889 or
mhsa@smcgov.org

  SAN MATEO COUNTY HEALTH
 BEHAVIORAL HEALTH
 & RECOVERY SERVICES

3-Year Plan to Spend \$12.5M Available One-time Funds
 *\$3.9M must be spent in Prevention and Early Intervention (PEI)

Priority	Item	FY 19/20	FY 20/21	FY 21/22	Grand Total
System Improvements - Core MHA Services	Recovery oriented, co-occurring capacity	\$500,000	\$250,000	\$250,000	
	Full Service Partnerships/Clinic restructuring		\$2,500,000	\$1,500,000	
	MHA PEI data-informed improvements	\$100,000	\$50,000	\$50,000	
	Trauma-informed systems (BHRS, HSA, CJ, etc)		\$100,000	\$100,000	
	System Improvement Total	\$600,000	\$2,900,000	\$1,900,000	\$5,400,000
Technology for System Improvement	Network Adequacy Compliance	\$100,000			
	Improve productivity	\$100,000	\$225,000	\$173,000	
	Increase access-telepsychiatry/health	\$30,000	\$30,000	\$30,000	
	Technology Total	\$230,000	\$255,000	\$203,000	\$688,000
Workforce and Community Education and Training	Workforce Capacity Development		\$206,000	\$98,000	
	Community Education		\$180,000	\$180,000	
	Crisis Coordination		\$150,000	\$150,000	
	Supported Employment		\$400,000	\$300,000	
	Workforce pipeline and retention		\$124,000	\$124,000	
	Education and Training Total	\$0	\$1,060,000	\$852,000	\$1,912,000
Capital Facilities (must be County-owned)	SSF Clinic		\$500,000		
	EPA Clinic	\$700,000			
	Casia House Renovations	\$100,000			
	Cordilleras		\$500,000	\$500,000	
	Capital Facility Improvements Total	\$800,000	\$1,000,000	\$500,000	\$2,300,000
Stop Gaps (ongoing programs)	Pride Center			\$700,000	
	HAP-Y		\$250,000	\$250,000	
	NMT- Adults		\$200,000	\$200,000	
	Tech Suite		\$300,000	\$300,000	
	Stop Gaps Total		\$750,000	\$1,450,000	\$2,200,000
TOTALS		\$1,630,000	\$5,965,000	\$4,905,000	\$12,500,000

**MHSA Innovation Ideas Prioritization – April 2019
(3 to 5-year projects)**

Target Population	Need	Potential Reach	Project Description	Innovation	Annual Cost
Native Hawaiian/ Pacific Islander (NHPI) college-aged youth	In San Mateo County Asian/Pacific Islanders have lowest rates of accessing specialty mental health service. Pacific Islander students demonstrate the lowest rate of student success of all ethnic groups. There is a need for culturally relevant mental wellbeing supports for college-age youth.	The largest number of Pacific Islanders in the Bay Area reside in San Mateo County (11,543). Pacific Islanders represent about 1.9% (510) of students in junior colleges in San Mateo County.	The Pacific Islanders Organizing, Nurturing, and Empowering Everyone to Rise and Serve (PIONEERS) program provides a culturally relevant, college behavioral health program for NHPI youth on campus and the surrounding communities. PIONEERS program has 3 key components. 1) Leadership institute for cultural education, identity, history, community to develop knowledge, skills and mental health networks. 2) Mana sessions to provide a space to decompress, engage in group discussions around mental health and wellness, as well as skill building workshops. 3) Forward Movement Projects are opportunities to give back or be of service to the NHPI community.	Culturally responsive college/ community student mental health promotion program (3-year project)	\$250,000 + admin/eval
Low income young adults 18-25	Young adults have the highest prevalence of severe mental illness however, only 35% receive treatment.	MidPen houses 500 low-income young adults throughout San Mateo County	Preventative mental health and harm reduction workshops, a peer support group, mental health screenings, referrals and linkages to resources for mental health and drugs and alcohol, crisis support in low-income affordable housing and surrounding community housing.	Co-location of prevention and early intervention services in affordable housing properties (3-year project)	\$250,000 + admin/eval

<p>Clients with co-occurring disorders</p>	<p>It is estimated that addiction-related conditions account for 25-30% of ED and PES visits. Likely 60-80% of BHRS clients (15,000/year) are co-occurring. The Youth Services Center has 95% youth with co-occurring diagnosis.</p>	<p>1,400 combined initial evaluations and follow-up visits per year</p>	<p>An accredited Addiction Medicine Fellowship sponsored by San Mateo County that is tailored to addressing the needs and priorities of the public sector including treating the most vulnerable communities with co-occurring substance use disorders, advancing equity on multiple levels, and contributing to educational projects in clinical and community settings.</p>	<p>Addiction medicine fellowships sponsored by a government agency (3-year project)</p>	<p>\$157,000 +admin/eval</p>
<p>Housed older adults at risk of homelessness</p>	<p>43% of all elders age 65+ do not have enough income to meet their most basic needs as measured by the Elder Index. That's over 38,000 elders struggling to make ends meet in San Mateo County. TIES Lines intake unit social workers received 3,301 housing related calls and 598 calls regarding homelessness.</p>	<p>For FY 18/19 there were 1,577 eligible 60+ older adults receiving Home Delivered Meals in San Mateo County. 340 home visits, 195 screenings and linkages to behavioral health and housing resources</p>	<p>A mental health peer counselor will conduct home visits and forums at senior centers for older adults receiving congregate nutrition or home delivered meals. Older adults will be screened for economic stress, behavioral health issues, and connected to homeless, housing and behavioral health resources for planning, and support, to prevent acute homelessness and to slow the growing older adult homeless population trend.</p>	<p>Economic and emotional stress screening to prevent homelessness (3-year project)</p>	<p>\$200,000 +admin/eval</p>

<p>Filipino at-risk youth (16-24) in northern San Mateo County</p>	<p>Filipino youth have high drop-out rates, highest rates of depression, and suicide ideation.</p>	<p>33% (about 33,000) of Daly City population are Filipino. The Daly City Youth Health Center sees about 52 Filipino youth ages 13-22 for behavioral health counseling</p>	<p>A cultural arts and wellness-focused social enterprise café that offers youth development and mental health programming on site. The social enterprise café will hire and train at-risk youth from the Daly City and surrounding communities and serve as a culturally affirming space for Filipino youth and community. The social enterprise model has proven to be a more sustainable approach when it comes to stable and diversified funding streams. The components of the mental health program are school to career prep, mental wellness ambassadors, cultural identity formation, leadership development, and financial wellness.</p>	<p>Social enterprise for mental health (5-year project)</p>	<p>\$700,000 +admin/eval</p>
				<p>Total Annual Funding</p>	<p>\$1,557,000 +admin/eval</p>