

# Childbirth (Mother)

For delivery or imminent delivery of a fetus beyond the first trimester (12 weeks). For < 12 weeks use Pregnancy Complications

### History

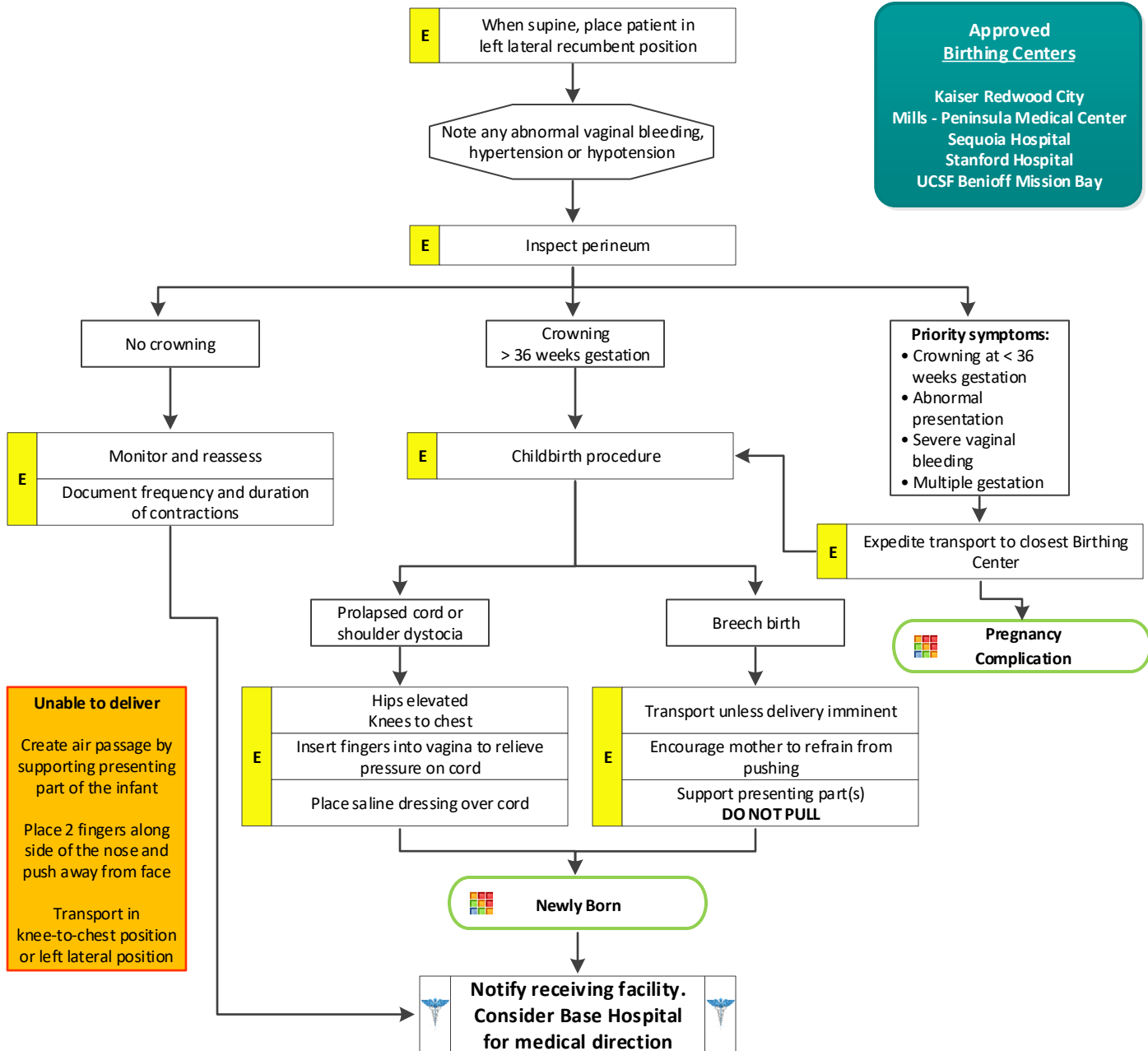
- Due date
- Time contractions started/how often
- Rupture of membranes
- Time/amount of any vaginal bleeding
- Sensation of fetal activity
- Past medical and delivery history
- Medications
- Gravida/Para status
- High risk pregnancy

### Signs and Symptoms

- Contractions
- Vaginal discharge or bleeding
- Crowning or urge to push
- Meconium

### Differential

- Abnormal presentation
  - Buttock
  - Foot
  - Hand
- Prolapsed cord
- Placenta previa
- Abruptio placenta



# Childbirth (Mother)

For delivery or imminent delivery of a fetus beyond the first trimester (12 weeks). For < 12 weeks use Pregnancy Complications

## Pearls

- Do not perform digital vaginal exam
- Document all times (delivery, contraction frequency and length, and time cord was cut).
- Document the name of the prehospital provider who cut the cord.
- After delivery, massaging the uterus (lower abdomen) will promote uterine contraction and help to control post-partum bleeding.
- Some perineal bleeding is normal with any childbirth. Large quantities of blood or free bleeding are abnormal.
- For prolapsed cord, wrap cord in saline soaked gauze cover to keep warm.

