

CME 10.50

AMA PRA Category 1 Credit(s)™

2025 PENINSULA INFECTIOUS DISEASES CONFERENCE

BRIDGING THE GAP:

Integrating clinical care and public health to improve patient outcomes

SEPTEMBER 9 & 10, 2025 | THE COLLEGE OF SAN MATEO THEATRE



Presented by San Mateo County Health, Public Health, Policy and Planning Division, Communicable Disease Control Program with support from our community partners.

ACCREDITATION

Accreditation Statement:

In support of improving patient care, Stanford Medicine is jointly accredited by the Accreditation Council for Continuing Medical Education (ACCME), the Accreditation Council for Pharmacy Education (ACPE), and the American Nurses Credentialing Center (ANCC), to provide continuing education for the healthcare team.

Credit Designation:**American Medical Association (AMA)**

Stanford Medicine designates this Live Activity for a maximum of 10.50 *AMA PRA Category 1 Credits™*. Physicians should claim only the credit commensurate with the extent of their participation in the activity.

Accreditation Council of Pharmacy Education (ACPE)

Stanford Medicine designates this knowledge-based activity for a maximum of 10.50 hours. Credit will be provided to NABP CPE Monitor within 60 days after the activity completion. UAN JA0000751-0000-25-012-L01-P.

American Nurses Credentialing Center (ANCC)

Stanford Medicine designates this Live activity for a maximum of 10.50 ANCC contact hours.

View full CME information and disclosure summary:

<https://stanford.cloud-cme.com/2025infectiousdiseases>

With the support of various partners, the San Mateo County Health System presents the **2025 Peninsula Infectious Diseases Conference**. This educational event emphasizes the latest clinical and public health guidance for the prevention, diagnosis, and treatment of adult and pediatric infectious diseases under the theme of **Bridging the Gap: Integrating Clinical Care and Public Health to Improve Patient Outcomes**. The conference will feature leading experts from the California Department of Public Health, San Mateo County Health, Stanford, UC Davis, and UCSF.

TARGET AUDIENCE

This activity is intended for healthcare professionals in the inpatient and outpatient settings, including primary care physicians, family medicine physicians and pediatricians, internists and subspecialists, obstetricians and gynecologists, hospitalists and Emergency Department clinicians. It is also designed to educate and update public health professionals and researchers, epidemiologists, infection preventionists, microbiologists and others with an interest in infectious diseases.

LEARNING OBJECTIVES

After participation in this event, attendees will be able to:

1. Diagnose, manage, treat and prevent common infections encountered in clinical practice.
2. Identify the salient features of emerging and re-emerging infections such as avian influenza, measles, mpox and others.
3. Incorporate into practice the current use of vaccines to prevent infectious diseases in pregnant women and infants.
4. Interpret and apply the most recent adult and pediatric vaccine recommendations from the Advisory Committee for Immunization Practices (ACIP) as well as current guidelines from the California Department of Public Health (CDPH) and the Centers for Disease Control and Prevention (CDC)
5. Describe the One Health concept/approach and how it relates to infectious diseases prevention in California
6. Outline the latest information, including the epidemiology, diagnosis and treatment of tickborne diseases in California
7. Incorporate into practice the diagnosis, management and prevention of Long COVID
8. Provide an overview of One Health—a collaborative, multi-sectorial and transdisciplinary approach with the goal of achieving optimal health outcomes, recognizing the interconnection between people, animals, plants and their shared environment
9. Identify the salient features of emerging and re-emerging infections and how climate change is contributing to the emergence and spread of these infections

PHOTO CREDIT

Photos courtesy of San Mateo County Flickr and Tiffany Nicole Tsukuda. Cover: Purisima Creek Redwoods Open Space Preserve, Woodside, CA. This page: Eugene A. Doran Memorial Bridge, Interstate 280, North Route 92, San Mateo, CA.

GENERAL INFORMATION

CONFERENCE LOCATION

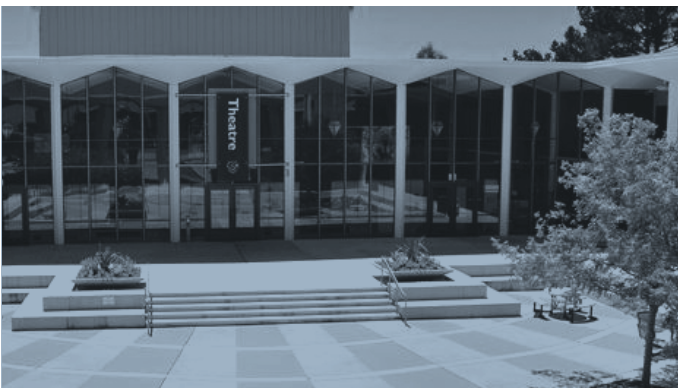
College of San Mateo Theatre

Music, Theater, Art Buildings,
1700 W Hillsdale Blvd, San Mateo, CA 94402

TRAVEL & TRANSPORTATION

From San Francisco follow US-101 south to exit 414B toward CA-92 W. From CA-92 W take exit 10 for W Hillsdale Blvd. Keep right and follow signs for College of San Mateo. Follow W Hillsdale Blvd. slightly left until it becomes Perimeter Rd. Turn right at the parking lot behind the theater.

The College of San Mateo is located about 15-20 minutes from San Francisco International Airport; 30-40 minutes from downtown San Francisco; 2-3 hours from Sacramento, depending on traffic and road conditions.



CONFERENCE SCHEDULE

TUESDAY – SEPTEMBER 9, 2025

TIME	SESSION	PRESENTER
7:30 AM	Registration, Continental Breakfast, Exhibits	
8:15 AM	Welcome Remarks	Catherine Sallenave, MD Kismet Baldwin-Santana, MD, MPH
8:30 AM	One Health	Kim Conway, DVM, MPVM, DACVPM
9:15 AM	Q&A	
9:25 AM	Tick-borne illnesses	Anne Kjemtrup, DVM, MPVM, PhD
10:10 AM	Q&A	
10:20 AM	Break, Refreshments, Exhibits	
10:35 AM	Core Functions and Responsibilities of Public Health Laboratories	Kristina Hsieh, DrPH, MPH
11:05 AM	Q&A	
11:15 AM	Animal bites and Capnocytophaga	Rebecca Campagna, DVM, MPH, DACVPM
11:45 AM	Q&A	
11:55 AM	Lunch, Networking, Exhibits	
1:00 PM	Prenatal Maternal Immunization for Maternal and Infant Protection	Natali Aziz, MD, MS
1:45 PM	Q&A	
1:55 PM	Update on C. auris and other emerging healthcare-associated infections	Victoria Chu, MD, MPH
2:40 PM	Q&A	
2:50 PM	Break, Refreshments, Exhibits	
3:05 PM	Climate change and emerging infectious diseases	Angel Desai, MD, MPH
3:50 PM	Q&A	
4:00 PM	Pediatric TB infection and disease	Devan Jaganath, MD, MPH
4:45 PM	Q&A	
5:00 PM	Closing Remarks	Catherine S. Sallenave, MD

Speakers and topics subject to change

WEDNESDAY – SEPTEMBER 10, 2025

TIME	SESSION	PRESENTER
7:30 AM	Registration, Continental Breakfast, Exhibits	
8:15 AM	Welcome Remarks	Catherine S. Sallenave, MD
8:30 AM	Mpox	Anna Branzuela, BA Vivian Levy, MD
9:15 AM	Q&A	
9:25 AM	Long COVID	Linda Geng, MD, PhD
10:10 AM	Q&A	
10:20 AM	Break, Refreshments, Exhibits	
10:35 AM	C. difficile	Stuart Cohen, MD
11:20 AM	Q&A	
11:30 AM	Measles	Roshni Mathew, MD
12:15 PM	Q&A	
12:25 PM	Closing Remarks	Catherine S. Sallenave, MD



Speakers and topics subject to change

CONFERENCE FACULTY

**Natali Aziz, MD, MS**

Director
Central Valley Perinatal Services, Stanford
Children's Health

**Angel Desai, MD, MPH**

Associate Professor
University of California, Davis

**Kismet Baldwin-Santana, MD, MPH**

Health Officer
San Mateo County Health

**Linda Geng, MD, PhD**

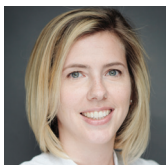
Associate Professor of Medicine
Stanford University

**Anna Branzuela, BA**

Clinical Services Manager
California Department of Public Health

**Kristina Hsieh, DrPH, MPH**

Public Health Laboratory Director
San Mateo County Health

**Rebecca Campagna, DVM, MPH, DACVPM**

Public Health Veterinarian
California Department of Public Health

**Devan Jaganath, MD, MPH**

Assistant Professor of Pediatrics
University of California San Francisco, Division of
Pediatric Infectious Diseases

**Victoria Chu, MD, MPH**

Associate Medical Director
Benioff Children's Hospital

**Anne Kjemtrup, DVM, MPVM, PhD**

Research Scientist, Veterinarian
Vector-Borne Disease Section, California Department
of Public Health

**Stuart H. Cohen, MD**

Professor and Chief
Division of Infectious Diseases, Department of Internal
Medicine, University of California at Davis

**Vivian Levy, MD**

Chief of Infectious Diseases
San Mateo Medical Center

**Kim Conway, DVM, MPVM, DACVPM**

One Health Lead
California Department of Public Health

**Roshni Mathew, MD**

Associate Professor
Department of Pediatrics, Division of Infectious
Diseases, Stanford School of Medicine



The Public Health, Policy and Planning (PHPP) Division of San Mateo County Health protects the health of everyone who lives, works, learns and plays in San Mateo County by preventing the spread of communicable diseases, delivering targeted health care services, providing public health laboratory testing and building communities where everyone has equitable opportunities to live a long and healthy life.



REGISTER TODAY: tinyurl.com/ym86nua9



**2025
PENINSULA
INFECTIOUS
DISEASES
CONFERENCE**



**SAN MATEO
COUNTY HEALTH**
All together better.