



FLOOR MATERIALS FOR FOOD AND BEVERAGE FACILITIES (California Retail Food Code H&S §14268)

Floor materials used in food and beverage facilities must be smooth, durable, nonabsorbent, and easily cleanable in the following areas:

- Where food is prepared, packaged, or stored
- Utensil and equipment washing areas
- Restrooms and hand washing areas
- Service areas and wait stations where sinks or food/beverage equipment are located
- Garbage and refuse storage areas
- Janitorial facilities
- Walk-in refrigerators and freezers
- Self-service food and beverage area
- Storage areas

Accepted Floor Materials

- **Commercial-grade sheet vinyl** (no felt backing) at least 0.080-inches thick, with heat-welded seams, may be suitable for some applications if also consistent with manufacturer's specifications. Where sheet vinyl is used as the floor material, a cove backing (cove stick) must be used at the wall/floor and toe kick/floor junctures. i.e. Altro Floors, Eco-Grip, Protect- All Flooring.
- **Quarry tile and ceramic tile** shall be impact-resistant and have a minimum thickness of ¼ inches.
- **Seamless poured epoxy minimum 3/16-inch thick** must be troweled-on with a uniform thickness of at least 1/8 inch. Epoxy paint and rolled-on epoxy commonly used on garage floors are not acceptable.
- **Approved sealed concrete for food storage rooms and walk-in units only.** Paint is not acceptable. The concrete surface must be smooth and free from pits, chips, or exposed aggregate. The cove base must be either an integral coved concrete curb or a "keyed in" tile cove base.
- **Approved Schluter system**

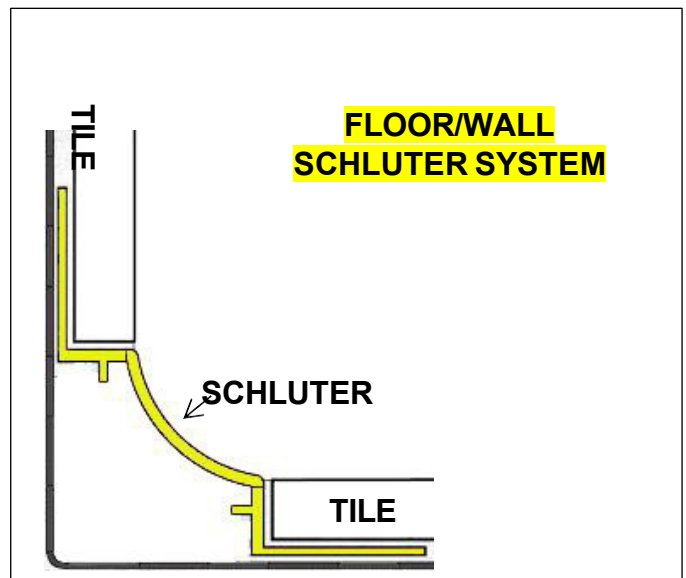
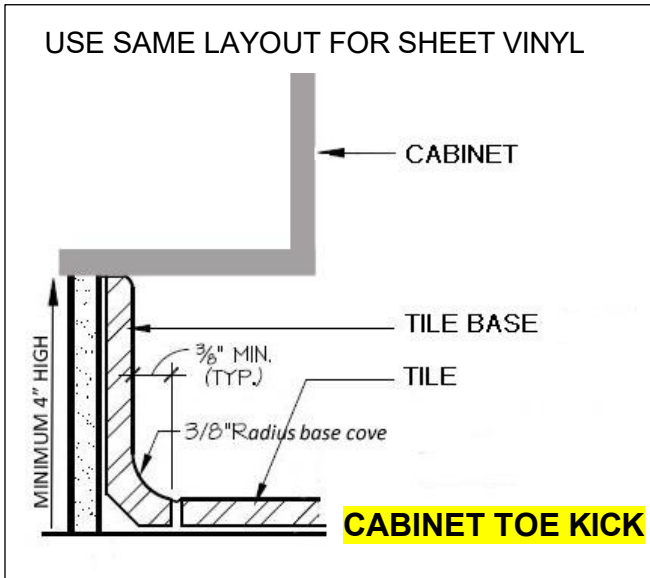
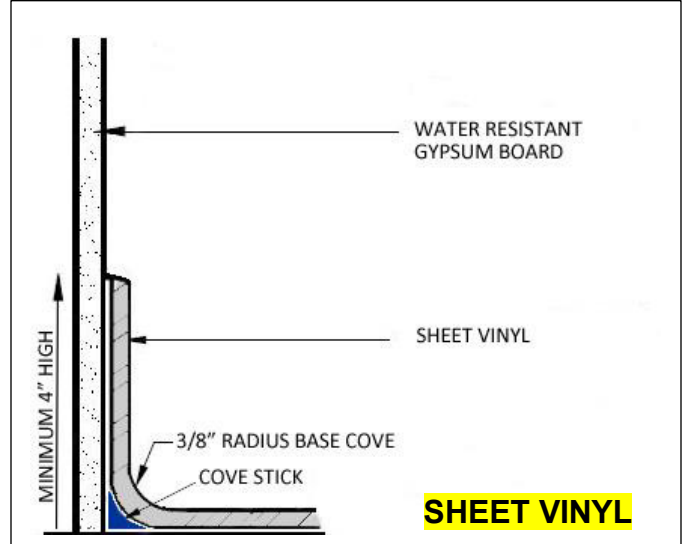
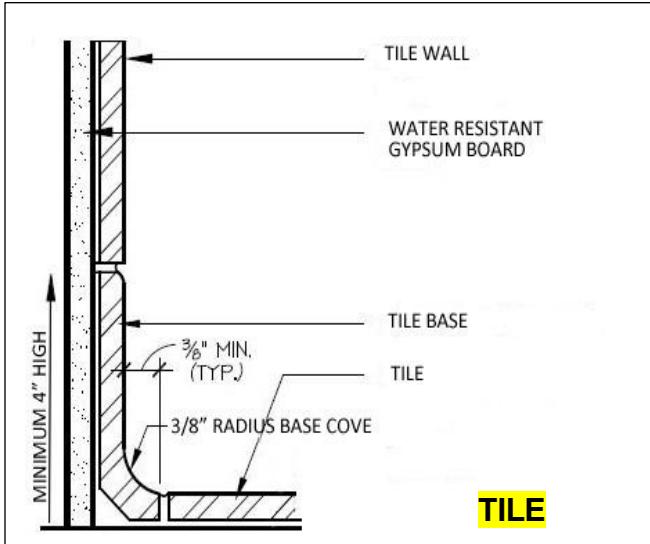
Unapproved Floor Materials

- **Top set cove base material**
- **Concrete flooring** is acceptable in locker rooms, employee change rooms, and storage rooms where food or beverages are stored in original unopened packaging (no bulk food bins allowed).
- **Vinyl Composition Tiles (VCT) with rubber base, and residential linoleum** may be installed in locker rooms and employee change rooms, and in storage rooms where food or beverages are stored in original unopened packaging (no bulk food bins allowed).

- Slate, travertine tile, or other natural stone tiles
- Wood or carpet
- Asphalt

Coving

Floor surfaces shall be covered at the juncture of the floor and wall with a 3/8 inch minimum radius coving and shall extend up the wall at least 4 inches.



Coving

- All the above floor materials may be installed in customer sales and dining areas, except within 3 feet of self-service food or beverage locations.
- Asphalt at outdoor trash enclosures must be sloped to drain.