

CME/CEU 7

AMA PRA
Category 1 Credits™

BRIDGING THE GAP

*Integrating clinical care and public health
to improve maternal and pediatric outcomes*

Presented by San Mateo County Health System and
San Mateo Medical Center Continuing Medical Education Program
Hosted by San Mateo County Medical Association

ACCREDITATION

The San Mateo County Health System is accredited by the Institute for Medical Quality/California Medical Association (IMQ/CMA) to provide continuing medical education for physicians.

The San Mateo County Health System takes responsibility for the content, quality and scientific integrity of this CME activity. The San Mateo County Health System designates this live activity for a maximum of 7.00 AMA PRA Category 1 Credit(s)[™]. Physicians should only claim credit commensurate with the extent of their participation in the activity.

Nurses:

For the purpose of recertification, the American Nurses Credentialing Center accepts AMA PRA Category 1 Credits[™] issued by organizations accredited by Accreditation Council for Continuing Medical Education (ACCME). For the purpose of relicensure, the California Board of Registered Nursing accepts AMA PRA Category 1 Credits[™] (report the number of hours of credit and fill in "CME Category 1" for the provider number).

Physician Assistants:

The American Academy of Physician Assistants (AAPA) accepts AMA PRA Category 1 Credits[™] from organizations accredited by ACCME. The National Commission on Certification of Physician Assistants (NCCPA) states that AMA PRA Category 1 Credits[™] are acceptable for continuing medical requirements for recertification.

Disclosure:

The presenters have attested that they have no relevant financial relationships with commercial interests (any entity producing, marketing, re-selling, or distributing health care goods or services consumed by, or used on, patients). The planners of the activity have also attested to have no relevant financial relationships with commercial interests. The ACCME defines relevant financial relationships as financial relationships within the last 12 months, as well as known financial relationships of spouse, domestic partner, or immediate family member that could create a conflict of interest.

Additional Information:

Josh Schechtel, MD, MPH
CME Program Manager
Continuing Medical Education Program
San Mateo County Health System
225 37th Avenue, San Mateo, CA 94403
Phone: (650) 578-7196
Email: jschechtel@smcgov.org

The San Mateo County Health System and San Mateo Medical Center Continuing Medical Education Program present the **Inaugural Peninsula Infectious Diseases Conference**. This educational event emphasizes the latest clinical and public health guidance for the prevention, diagnosis, and treatment of maternal and pediatric infectious diseases under the theme of **Bridging the Gap: Integrating Clinical Care and Public Health to Improve Maternal and Pediatric Outcomes**.

TARGET AUDIENCE

This activity is intended for obstetricians, gynecologists, pediatricians, family physicians, internists, physician assistants, nurse practitioners, nurses, public health practitioners, and other health professionals who are involved in the treatment of maternal and pediatric infections.

LEARNING OBJECTIVES

After participation in this event, attendees will be able to:

1. Appropriately screen for, test, and treat maternal and pediatric infections in line with the most recent California Department of Public Health (CDPH) and Centers for Disease Control and Prevention (CDC) guidelines.
2. Describe when and how to report Title 17 Reportable Diseases and Conditions to the Public Health Department.
3. Interpret and apply the most recent Advisory Committee for Immunization Practices (ACIP) maternal and pediatric vaccine recommendations and guidelines.
4. Identify regional systems-level resources and strategies for enhanced maternal/infant information-sharing and coordination.

PHOTO CREDIT

Photos courtesy of San Mateo County Flickr and Tiffany Nicole Tsukuda. Cover page: Purisima Creek Redwoods Open Space Preserve, Woodside, CA. This page: Eugene A. Doran Memorial Bridge, Interstate 280, North of Route 92, San Mateo, CA.

BRIDGING THE GAP

*Integrating clinical care and public health
to improve maternal and pediatric outcomes*

CONFERENCE SCHEDULE*

TIME	SESSION	PRESENTER
7:30 AM	Registration, Continental Breakfast, Visit Exhibits	
8:15 AM	Welcome Remarks	Matthew Geltmaker, LCSW Dave Pine, JD
8:30 AM	Vaccine-Preventable Congenital Infections and Other Vaccine-Preventable Diseases	Kathleen Harriman, PhD, MPH, RN
9:15 AM	Q&A	
9:25 AM	Zika Virus	Diana E. Ramos, MD, MPH, FACOG
10:10 AM	Q&A	
10:20 AM	Zika Virus Reporting, U.S. Zika Virus Pregnancy and Infant Registry, Resources for Providers, and Public Health Champions	Kendra Benttinen, MS Aja Griffin, MPH Similoluwa Sowunmi, MPH
10:45 AM	Break, Refreshments, Visit Exhibits	
10:55 AM	Influenza	Stuart H. Cohen, MD
11:40 AM	Q&A	
11:50 PM	Lunch, Visit Exhibits	
12:20 PM	Pertussis	Jean A. Wiedeman, MD, PhD
1:05 PM	Q&A	
1:15 PM	Congenital Zika Syndrome, Cytomegalovirus, Herpes Simplex Virus, Toxoplasmosis	Natasha A. Nakra, MD, MS
2:00 PM	Q&A	
2:10 PM	Break, Refreshments, Visit Exhibits	
2:20 PM	Reporting & Introduction to the Perinatal Hepatitis B Prevention Program	Catherine S. Sallenave, MD
2:30 PM	Perinatal Hepatitis B	Natali Aziz, MD, MS
3:15 PM	Q&A	
3:25 PM	Syphilis in San Mateo & Santa Clara Counties	Vivian Levy, MD
3:35 PM	Congenital Syphilis	Julie Stoltey, MD, MPH
4:20 PM	Q&A	
4:30 PM	Closing Remarks	Catherine S. Sallenave, MD

POST-CONFERENCE ACTIVITIES

4:40 PM San Mateo County Medical Association Mixer

**Speakers and topics subject to change.*

REGISTER ONLINE AT:

<https://peninsula-id-conf.eventbrite.com>

CONFERENCE REGISTRATION

Early registration is advised – space is limited. Registration is free. Continental breakfast, lunch, and refreshments will be provided. Parking is free.

CONFERENCE FORMAT

The conference will be offered in multiple formats: didactic sessions, case studies, and questions and answers sessions. The conference will also be recorded and available for online viewing. Presentation slides will be posted online after the conference.

EXHIBITS

Conference attendees are invited to visit exhibits from regional local health departments, the California Department of Public Health, and community-based organizations during the conference.

CONFERENCE LOCATION

San Mateo County Medical Association Conference Center
777 Mariners Island Boulevard, San Mateo, CA 94404
Phone: (650) 312-1663
smcma@smcma.org
<https://www.smcma.org>

TRAVEL & TRANSPORTATION

Follow US-101 to CA-92 E to Mariners Island Blvd. Exit 14A from CA-92 E towards Mariners Island Blvd.

The Conference Center is located about 15 to 20 minutes from the San Francisco International Airport; 40 minutes to 1.5 hours from San Francisco, Santa Clara, or Alameda; and 2 to 3 hours from Sacramento, depending on traffic and road conditions.

For attendees who use a ridesharing or ground transportation service, average Bay Area fares and fees range between \$8 - \$161, depending on distance, standard vs. luxury rates, and fixed and demand/surge-based pricing.

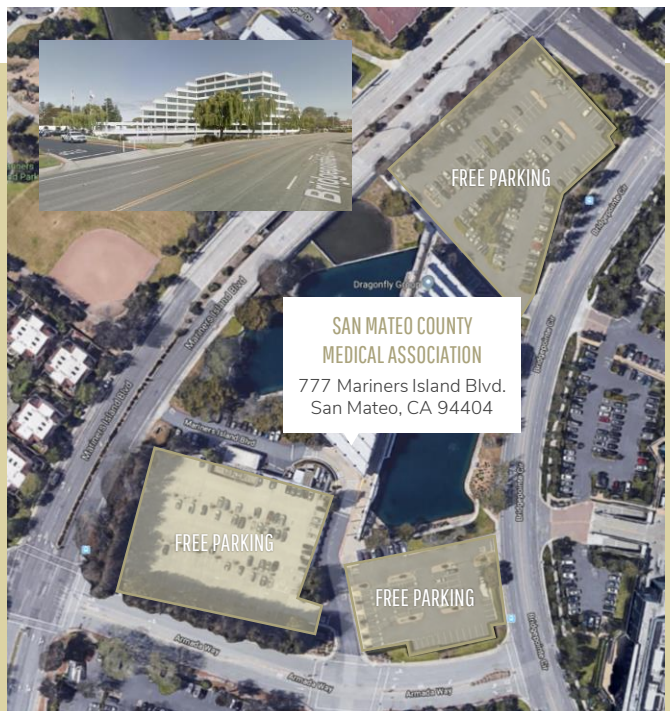
SPECIAL ACCOMMODATIONS

If you have any special needs due to a disability as specified in the Americans with Disabilities Act, please call the Continuing Medical Education Program at (650) 578-7196 for assistance.

FOR ADDITIONAL INFORMATION

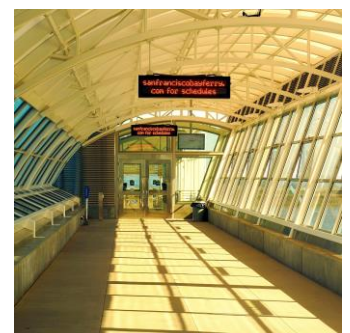
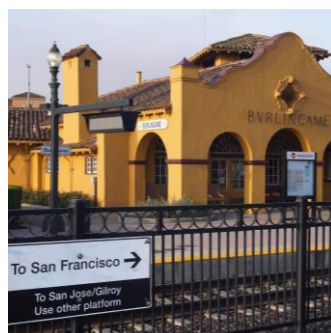
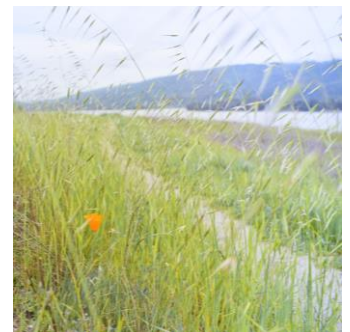
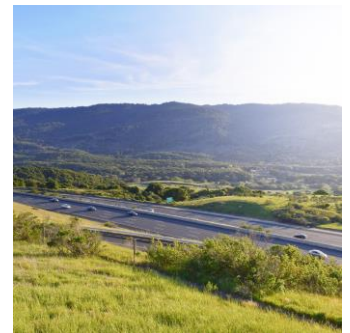
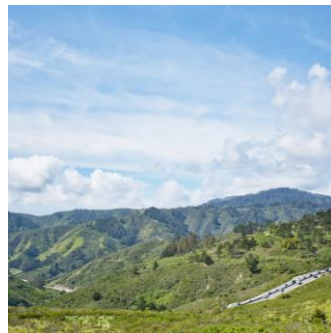
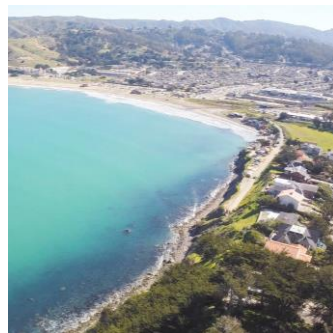
For additional information, please contact Tiffany Nicole Tsukuda, Epidemiologist, at (650) 573-2048 or c_ttsukuda@smc.gov, or visit <https://www.peninsula-id-conf.eventbrite.com>.

GENERAL INFORMATION



SAN MATEO COUNTY

San Mateo County is a 744-square mile area stretching from Daly City to East Palo Alto and past Pescadero. More than 741,800 people live here.



LOCATIONS

From left to right, top to bottom: Redwood City Port; San Pedro Valley, Montara; Coyote Point Marina; Pigeon Point Lighthouse; beach near Pescadero; Pacifica; California Route 35 - Skyline Boulevard, Santa Cruz Mountains; Ralph D. Percival Memorial Vista Point, Edgewood Road, overlooking Interstate 280; Filoli country estate and botanical garden, Woodside; farming in Pescadero; Purisima Creek Redwoods Open Space Preserve; Cañada Road, Upper Crystal Springs Reservoir; view from Ridge Trail, South San Francisco; South San Francisco town clock; Burlingame Caltrain Station; San Francisco International Airport

CONFERENCE FACULTY

CALIFORNIA DEPARTMENT OF PUBLIC HEALTH



Kathleen Harriman, PhD, MPH, RN
Chief
Vaccine Preventable Diseases Epidemiology Section
Immunization Branch



Diana E. Ramos, MD, MPH, FACOG
Public Health Medical Officer
Maternal, Child and Adolescent Health Division



Julie Stoltey, MD, MPH
Chief
Office of Science and Policy
Sexually Transmitted Diseases Control Branch

STANFORD UNIVERSITY SCHOOL OF MEDICINE



Natali Aziz, MD, MS
Director
Division of Perinatal Infectious Diseases
Clinical Associate Professor
Obstetrics & Gynecology – Maternal Fetal Medicine

UNIVERSITY OF CALIFORNIA, DAVIS SCHOOL OF MEDICINE



Stuart H. Cohen, MD
Professor and Chief
Division of Infectious Diseases
Department of Internal Medicine



Natasha A. Nakra, MD, MS
Clinical Assistant Professor and
Pediatric Infectious Diseases Specialist
Division of Pediatric Infectious Diseases, Immunology and Allergy
Department of Pediatrics



Jean A. Wiedeman, MD, PhD
Associate Professor and
Pediatric Infectious Disease Specialist
Division of Pediatric Infectious Diseases, Immunology and Allergy
Department of Pediatrics

SPECIAL GUEST



Dave Pine, JD
District 1 Supervisor and Board President
San Mateo County Board of Supervisors

BRIDGING THE GAP

*Integrating clinical care and public health
to improve maternal and pediatric outcomes*



The San Mateo County Health System Public Health, Policy and Planning Division protects the health of all San Mateo County residents by investigating and analyzing communicable diseases and other health issues, engaging in disease treatment and prevention measures, and creating conditions that enable all San Mateo County residents to live healthy lives.



REGISTER TODAY

INAUGURAL PENINSULA
INFECTIOUS DISEASES
CONFERENCE

DATE

TUESDAY, MARCH 6, 2018

TIME

8:30 AM - 4:40 PM

LOCATION

SAN MATEO COUNTY MEDICAL ASSOCIATION
CONFERENCE CENTER
777 MARINERS ISLAND BLVD
SAN MATEO, CA 94404

REGISTRATION

[HTTPS://PENINSULA-ID-CONF.EVENTBRITE.COM](https://peninsula-id-conf.eventbrite.com)

SAN MATEO COUNTY HEALTH SYSTEM
225 37th AVENUE
SAN MATEO, CA 94403



COUNTY OF SAN MATEO
HEALTH SYSTEM