

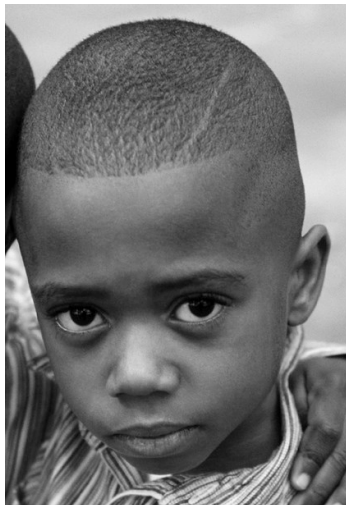


How to apply for the MTU:

If you think your child may be eligible for therapy services through the MTP, you may call the administrative office to request an application or visit the

State CCS website at:

<http://www.dhs.ca.gov/pcfh/cms/ccs/mtp.htm>
download the application and mail or fax it to the CCS Administrative office.



California Children's Services

Medical Therapy Units:

San Mateo

65 Tower Road
San Mateo, CA 94402
(650) 312-8929 phone
(650) 573-5794 fax

San Bruno

1280 Commodore Drive
San Bruno, CA 94066
(650) 877-5737 phone
(650) 872-1173 fax

Administration

701 Gateway Blvd., Ste. 400
S. San Francisco, CA 94080
(650) 616-2500 phone
(650) 616-2598 fax



CALIFORNIA CHILDREN'S SERVICES

MEDICAL THERAPY PROGRAM



SAN MATEO COUNTY

What is the Medical Therapy Program?

The Medical Therapy Program (MTP) is a part of California Children's Services (CCS) that provides Occupational Therapy (OT) and Physical Therapy (PT) to children with certain medical conditions. Therapy services are provided at rehabilitation units called "Medical Therapy Units" (MTUs) which are located in public schools.

Some conditions which would qualify a child to receive CCS MTP services include (but are not limited to): cerebral palsy, spina bifida, muscular dystrophy, rheumatoid arthritis, spinal cord injuries, arthrogryposis, and osteogenesis imperfecta. For more information about eligibility for the MTP, you can look on the internet at:

<http://www.dhs.ca.gov/pcfh/cms/ccs/mtp.htm>

or call the CCS office.

The MTP, like CCS, is available to children from birth to 21 years old.

Eligibility for the MTU is based **ONLY** on the child's medical condition, not on family income.



How Does a Child Get MTP Services?

Anyone (a parent, teacher, school nurse, or physician) can refer a child to the MTP. The CCS program reviews the child's medical records and decides if he or she has a condition which is eligible for the MTP. If the child is found to be eligible, the family is asked to bring him/her to the MTU for an assessment to decide if therapy is necessary.

If the child is accepted into the MTP, he/she will be assigned to an OT and/or a PT. The therapist(s) evaluate the child and then review the results of the evaluation with the parents. Together they develop a therapy plan to address the child's specific needs. OT and/or PT is approved and prescribed by the physician who has been chosen to monitor the child's therapy.

Therapy Services

CCS therapists work with families to help children learn the skills they need for daily life. The therapists use fun activities so therapy looks more like play than work.

Occupational Therapists (OTs) work to improve self-help skills or Activities of Daily Living (ADLs). These can include: feeding, dressing, bathing, using the hands for play or school work. OTs may recommend equipment to help with these tasks (like hand splints or adapted utensils for eating).



Physical Therapists (PTs) work on improving



mobility. This could include rolling, crawling, sitting, walking and using a wheelchair or walker.

PTs might also recommend

equipment to help with these tasks (like braces, wheelchairs or walkers).



Evaluation: Therapists evaluate children every 6-12 months. Based on the evaluation and in consultation with the parents/caregivers and the child's doctor, they determine the goals and frequency of therapy. Children may receive active therapy (bi-weekly or more frequently) or they may be monitored less frequently. The frequency of therapy depends on the child's current status and progress in therapy.

Other Services: Therapists may teach parents/caregivers ways to do therapeutic activities with their child as part of their normal daily routine. They may do home or school evaluations to assess accessibility and adaptive equipment needs. They help families choose and obtain appropriate specialized equipment such as wheelchairs, bathroom equipment, and braces.

School Consultation: Therapists may consult with school staff about issues that affect the child's ability to participate in the school program. They attend Individualized Educational Plan meetings (IEP) to make sure school personnel are aware of the services provided by the MTP.