



Seasonal Influenza Report 2016-17

San Mateo County Health System, Public Health Policy and Planning
Weeks 42 & 43 (Oct. 16 to 29, 2016)

www.smchealth.org/flu · Provider Reporting: 650.573.2346 · 650.573.2919 (fax)

Volume 9, Issue 2

Catherine Sallenave MD, CD Controller · Moon Choi, Epidemiologist · Scott Morrow MD, MPH, Health Officer

Current Influenza Activity

San Mateo County

- During week 43 (ending 10/29/16), San Mateo County reported minimal influenza activity.
- Week 43 of the current season had slightly more influenza detections than week 43 of the previous season (Figures 1 and 2).
- Within the County, based on laboratory reports from reporting county and hospital laboratories*, a total of 294 specimens have been tested for influenza since the beginning of influenza season, with four (1.4%) testing positive. A total of 69 specimens have been tested for RSV since the beginning of the influenza season, with one (1.4%) testing positive (Figures 1, 3, and 4).
- San Mateo County Public Health Laboratory (SMC PHL) has the ability to further subtype positive influenza specimens; none of the positives were subtyped for weeks 42 or 43.
- Influenza-like illness (ILI) surveillance of chief complaint data from San Mateo Medical Center ED shows low activity, similar to activity during the same period last season (Figure 5).

California

- Influenza activity in California was "sporadic" during week 43.
- Of 1,389 specimens tested in week 43, 44 (3.2%) tested positive for influenza. Of these positive specimens, 41 (93.2%) tested positive for influenza A, of which none were subtyped. The three (6.8%) remaining positive specimens tested positive for influenza B.
- Outpatient visits for ILI were 1.0% of patient visits during week 43, which is within expected levels for this time of year.
- There was one laboratory-confirmed outbreak during week 42. There were no laboratory-confirmed influenza deaths or outbreaks during week 43.
- Hospital visits for Pneumonia and Influenza (P&I) for week 43 were higher (3.8%) than week 42 (3.4%) but within expected levels for this time of year.†

United States

- During week 43, influenza activity remained low in the United States.
- Of the 10,890 specimens tested by clinical laboratories, 177 (1.6%) were positive for influenza, of which 116 (65.5%) were influenza A and 61 (34.5%) were influenza B.†
- Of the 493 specimens tested by public health laboratories, 33 (6.7%) were positive for influenza. Of the positive specimens, 28 (84.8%) were influenza A, of which 6 (21.4%) were 2009 H1N1, 21 (75.0%) were H3, and 1 (3.6%) was not subtyped. Of the remaining positive specimens, 5 (15.2%) were influenza B, of which 1 (20.0%) was of Yamagata lineage and the remaining 4 (80.0%) did not have lineage performed.
- During week 41, 5.6% of all deaths reported through the National Center for Health Statistics Mortality Surveillance System were due to Pneumonia and Influenza (P&I)‡, below the epidemic threshold of 6.5% for week 41. Due to a backlog of records, this was the most recent data to date of publication.
- Two influenza-associated pediatric deaths were reported during week 43.
- During week 43, 1.3% of patient visits reported through the U.S. Outpatient Influenza-like Illness Surveillance Network (ILINet) were due to ILI. This is below the national baseline of 2.2%.
- ILI activity in all 50 states was reported to be "minimal" during week 43.

Figure 1 Number of Positive Influenza & RSV Tests by Week San Mateo County, 2014-2017

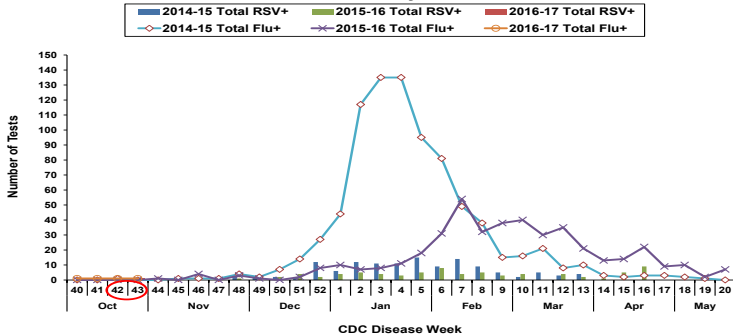


Figure 2 Number of Positive Influenza Tests by Type and Week, San Mateo County, 2015-17

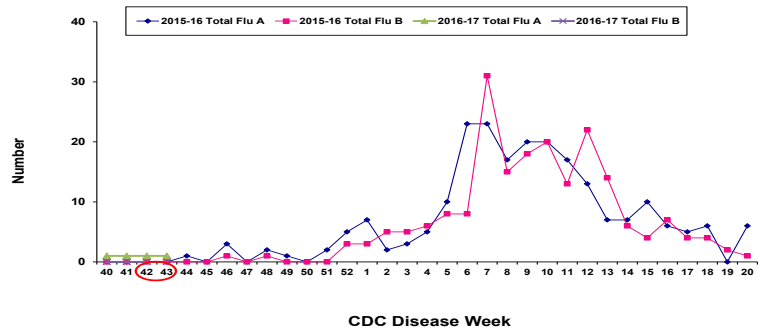


Figure 3 Percentage of Positive Respiratory Syncytial Virus (RSV) Specimens from Reporting Labs San Mateo County, 2015-17

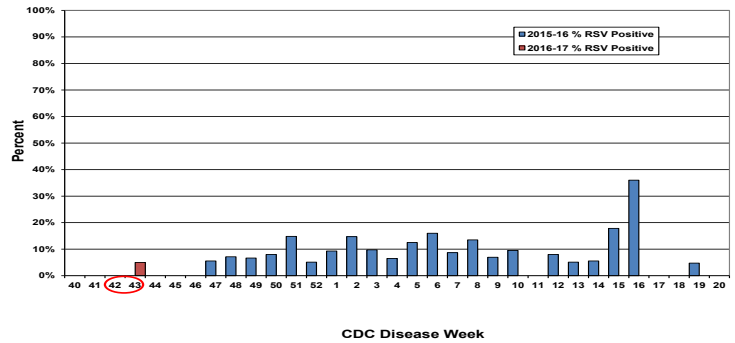


Figure 4 Percentage of Positive Influenza Specimens from Reporting Labs San Mateo County, 2015-17

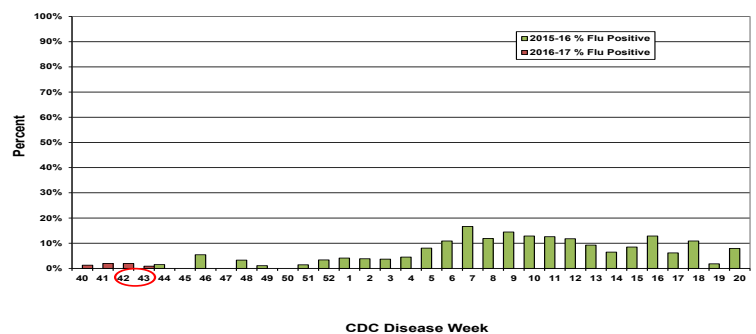
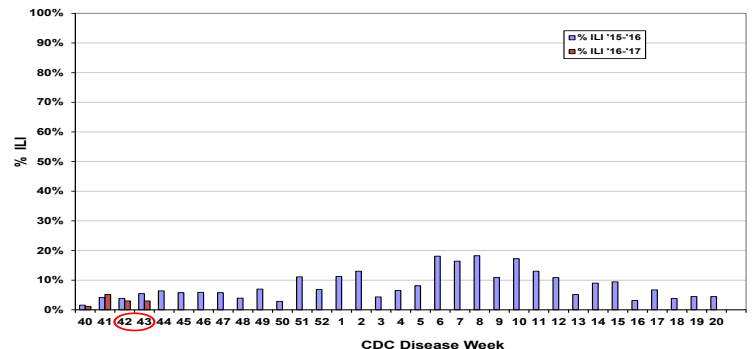


Figure 5 Proportion of Influenza-like Illness Visits (ILI): San Mateo County Medical Center ED, 2015-17 Influenza Seasons



*Our reported numbers do not represent all cases of influenza within SMC, but are intended to demonstrate trends in influenza activity. This issue does not represent data from Kaiser.
Sources: SMC: San Mateo Medical Center, Sequoia Hospital, Mills-Peninsula Hospital, San Mateo County Public Health Laboratory; CA: California Influenza Surveillance Project: <http://www.cdph.ca.gov/PROGRAMS/DCDC/Pages/CaliforniaInfluenzaSurveillanceProject.aspx>; US: CDC Influenza Activity and Surveillance: <http://www.cdc.gov/flu/weekly/fluactivitysurv.htm>

†This data reflects Kaiser hospitalizations only.
‡The CDC notes: "P&I percentages for recent weeks may be artificially low due to a backlog of records requiring manual processing. Percentages will likely increase to levels more similar to the baseline as more data becomes available."