

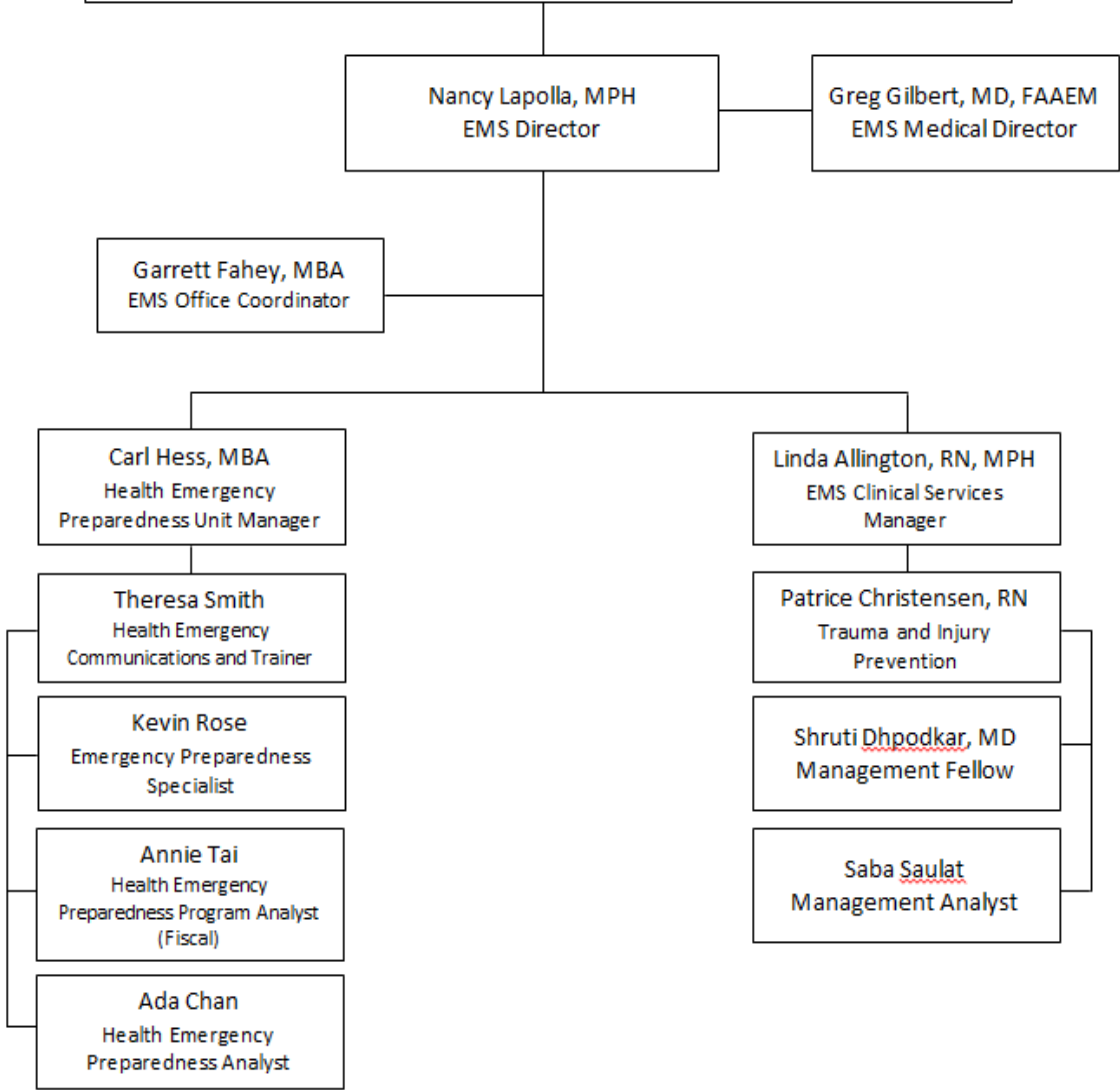
County of San Mateo Emergency Medical Services Agency

Mission Statement

- To ensure the highest quality emergency medical care to the people of San Mateo County through an intergraded and coordinated system of services, and to foster the medical and health resiliency of our community during disasters and emergencies.



**SAN MATEO COUNTY EMS AGENCY
ORGANIZATION CHART**



EMS Core Functions

- EMS Organization & Management
- Personnel Education, Certification, Accreditation
- Communications
- Response, Transportation, Equipment
- Medical Control, Treatment, Policies/ Procedures
- Facilities (base hospitals, trauma designation)
- Documentation/Data
- **Disaster Medical Services**
- Public Education, Information & Prevention
- Medical Control, Treatment, Policies/Procedures



Core Functions HS Preparedness

- Prepare the Health System & other County partners for public health and medical emergencies & disasters.
- Facilitate preparation of local medical/health care community
- Improve and enhance the capacity of the Health System to monitor the health of the community



Medical Health Operational Area Coordinator (MHOAC)

- The MHOAC is responsible for coordinating the countywide disaster medical response. In the event of disaster, the MHOAC will be located in the Medical Branch of the County EOC.
- Responsibilities at the Operational Area level include, but are not limited to:
- Coordinating disaster medical care operations within the county area.
- Coordinating with Public Health and Mental Health response activities.



Types of Public Health & Medical Emergencies

- Disease Outbreaks
- Bioterrorism
- Chemical Release
- Nuclear/Radiation Release
- Mass Casualty Incidents
- Natural Disasters



Response System Medical Functions

- Medical & Health Plans
- Policies & Procedures
- Assessment of Immediate needs
- Coordinate Resources
- Coordinate Patients & Medical Evacuation
- Coordinate out-of Hospital Medical Care Providers
- Coordinate Pre-hospital Emergency Services
- Coordinate Field Treatment sites



Public Health Emergency Response

- Health Surveillance
- Laboratory Testing
- Healthcare Surge
- Risk Communication
- Medical Counter-Measures
- Activate HS DOC



Disaster Operations

- Mass vaccination (pandemic, disease outbreak)
- Disease outbreak investigation and isolation and quarantine
- Evacuation and placement of medically fragile
- Medical shelters and alternate care sites
- Field treatment sites
- Logistics: Receive and distribute disaster caches and emergency medical supply shipments
- Assess and coordinate the delivery of outpatient care due to surge or inoperable facilities
- Report on the status of the healthcare system



County Emergency Operations Center

Operations

Finance

Planning

Logistics

Health Branch



Health System Dept.
Operations Center

- Disease OUTBREAKS
- Mass Vaccination
- Medical Shelters
- Clean Water & Food
- Animal Evacuations
- Patient Care

Hospital SNF
Dialysis

Outpatient
Facilities







Medical Supply Cache







By working together we will be more prepared for any disaster.

Every year we train together we increase our preparedness.



Photo courtesy of U.S. Navy - REUTERS



The question is



When?



If this happened today....



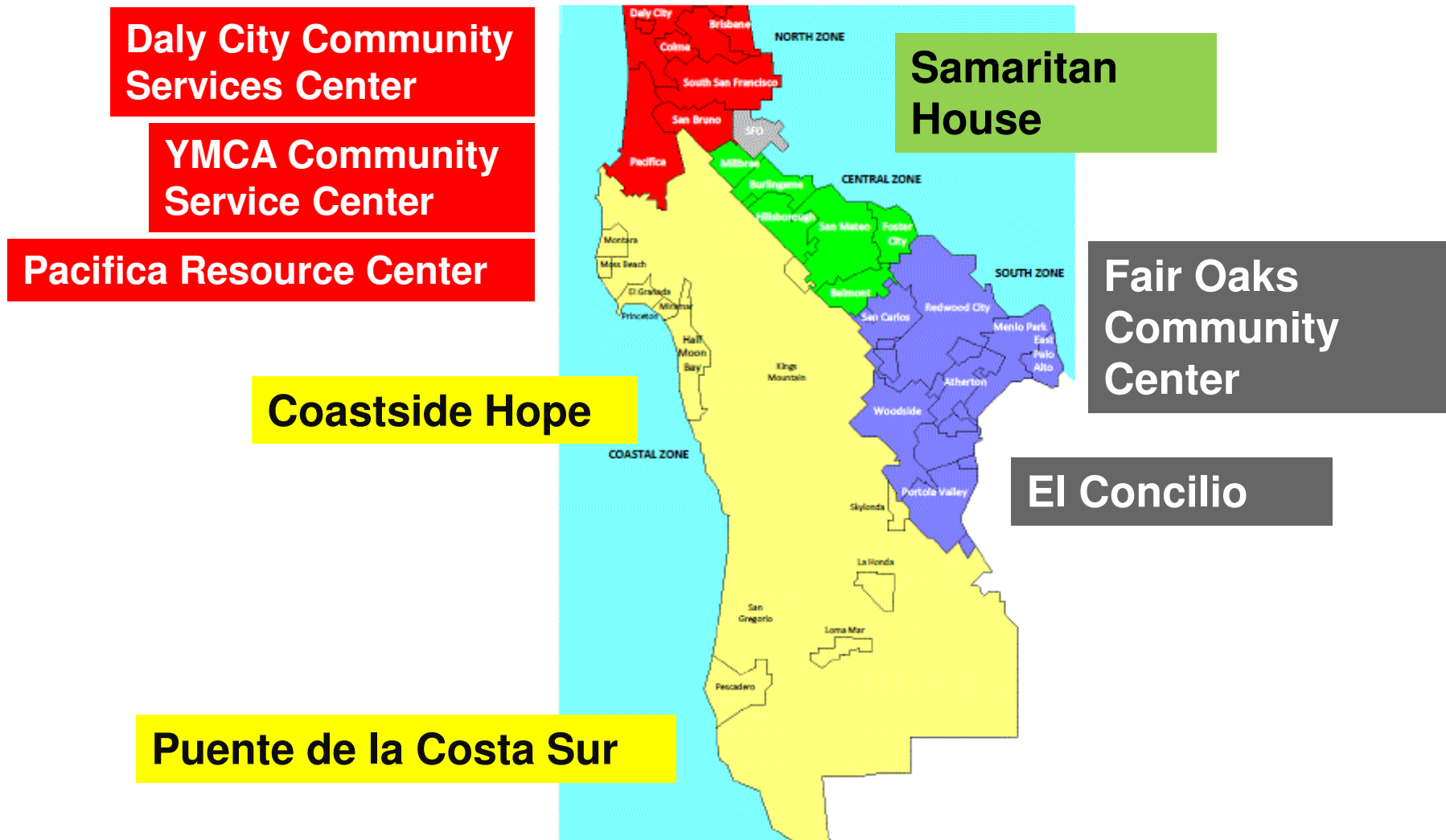
What are you going to do?

Our County is Vulnerable





OES ZONES



CORE agencies provide or locate emergency food, shelter, clothing, rental assistance, utility assistance, and short-term counseling and/or employment information. Most provide translation services.

Why is all this Important

- Not enough County-wide resources to meet the need
- Public perception is that responders would be able to rescue each individual in need
- 10% meets Vulnerable Population 4% medically fragile living independently needs our help
- We need you to be able to take care of your facilities and help each other.



2005 STORM DAMAGE

Sustained significant damage during the recent winter storm events



OLD SAN MARCO

TSUNAMI HAZARD

Thank you



TSUNAMI!

IN CASE OF EARTHQUAKE, GO TO HIGH GROUND OR INLAND

