

Frequency Of Deaths By Cause And Year

Leading and Selected Causes of Death, San Mateo County, 1990-2008

Rank	Cause of Death	1990	1991	1992	1993	1994	1995	1996	1997	1998	1999	2000	2001	2002	2003	2004	2005	2006	2007	2008
1	Heart Disease	1430	1414	1382	1496	1399	1437	1471	1457	1434	1422	1267	1331	1269	1291	1244	1249	1254	1163	1125
2	Cancer	1250	1266	1282	1218	1237	1297	1278	1217	1320	1263	1280	1236	1227	1222	1236	1206	1183	1188	1138
3	Cerebrovascular Disease	482	447	459	500	494	490	519	485	475	495	471	449	428	407	384	359	331	275	289
4	Respiratory Disease	272	269	257	288	300	276	266	263	286	366	311	352	333	324	319	310	269	299	279
5	Pneumonia & Influenza	175	184	180	182	190	204	193	226	269	202	196	187	232	217	201	198	205	202	193
6	Unintentional Injury	170	132	148	150	141	166	142	150	121	154	145	133	160	185	170	146	200	166	183
7	Alzheimer's Disease	62	54	59	62	71	76	70	68	89	115	113	132	151	165	143	160	174	174	248
8	Diabetes Mellitus	59	57	68	73	89	100	96	99	119	110	103	94	100	114	80	115	91	110	84
9	Liver Disease	105	104	111	102	109	110	90	100	78	60	60	71	80	77	91	77	67	107	97
10	Suicide	66	73	79	90	67	87	78	62	78	64	53	51	41	70	64	72	49	69	71
11	AIDS	89	105	104	127	124	107	83	22	13	17	10	27	24	21	18	18	23	10	9
12	Infectious Disease	49	59	48	59	49	57	59	59	44	62	55	57	44	54	34	56	54	77	80
13	Parkinson's Disease	29	22	25	27	25	32	29	27	21	32	39	43	38	38	49	47	64	46	42
14	Homicide	40	47	49	40	33	44	21	30	30	22	14	20	22	29	29	39	31	18	25
15	Atherosclerosis	37	43	26	39	37	29	36	38	38	30	16	21	19	23	22	25	13	12	7

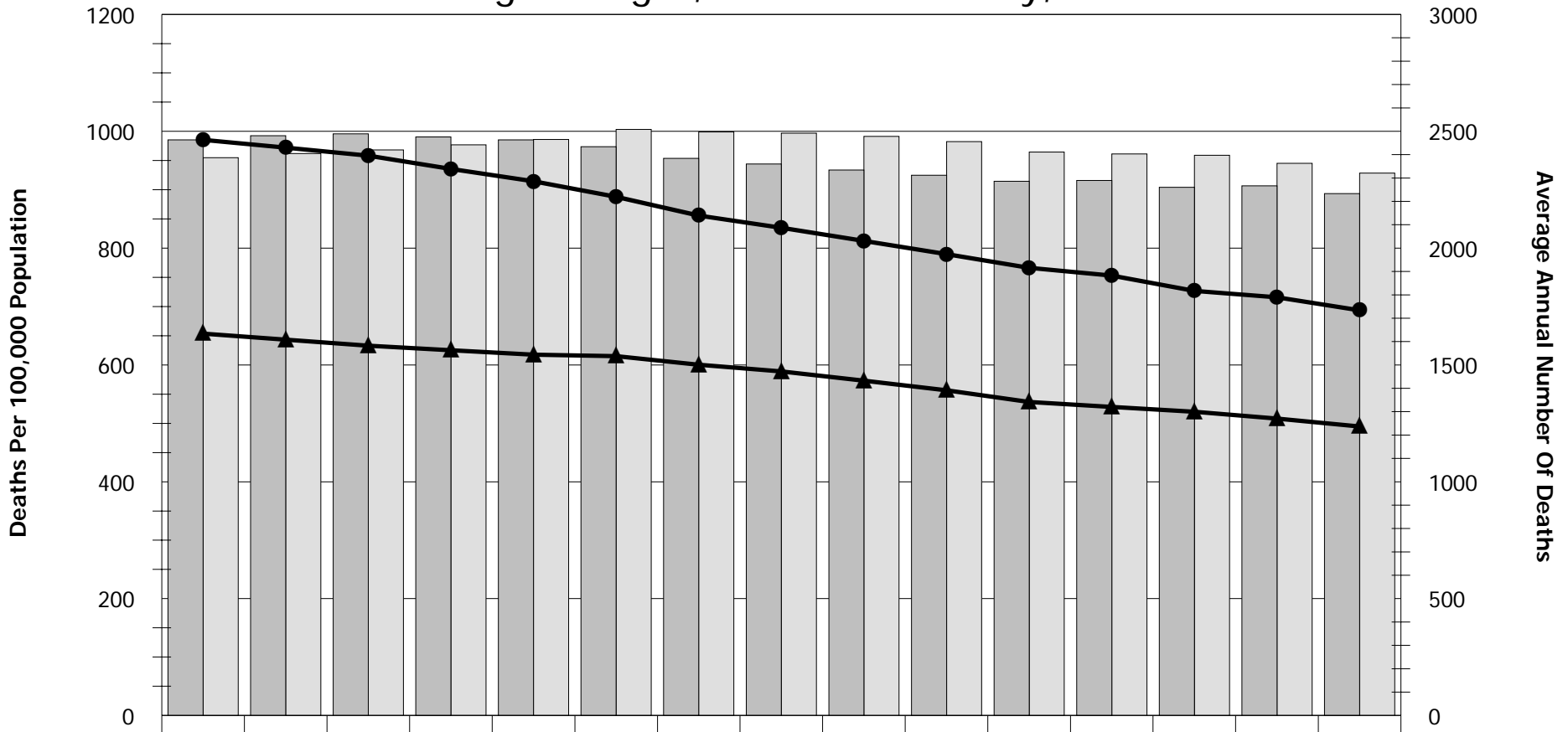
1990-1998 numbers have been adjusted to relevant comparability ratios

Source Data: California Department of Health Services, Center for Health Statistics, Death Records 1990-2008

MORT-1

Mortality By Sex

5-Year Moving Averages, San Mateo County, 1990-2008



	90-94	91-95	92-96	93-97	94-98	95-99	96-00	97-01	98-02	99-03	00-04	01-05	02-06	03-07	04-08
Overall Rate	794.1	782.4	770.4	756.5	743	730.7	708.1	692.5	674.5	656.7	636.3	623.4	607.9	596.9	580.3
Number Male	2463	2481	2489	2476	2463	2434	2384	2360	2334	2312	2286	2289.8	2260.2	2266.6	2233.6
Rate Male	985.4	972.1	958.2	935.5	914.3	887.7	855.7	834.8	812.3	789.6	766.2	752.9	726.7	715.8	693.6
Number Female	2387	2405	2420	2442	2465	2508	2497	2492	2478	2456	2411	2403	2397.4	2362.8	2320.8
Rate Female	653.6	643.3	633	625.2	617.6	615	600.3	588.8	573	556.5	536.6	528.1	519.9	508.1	494.7

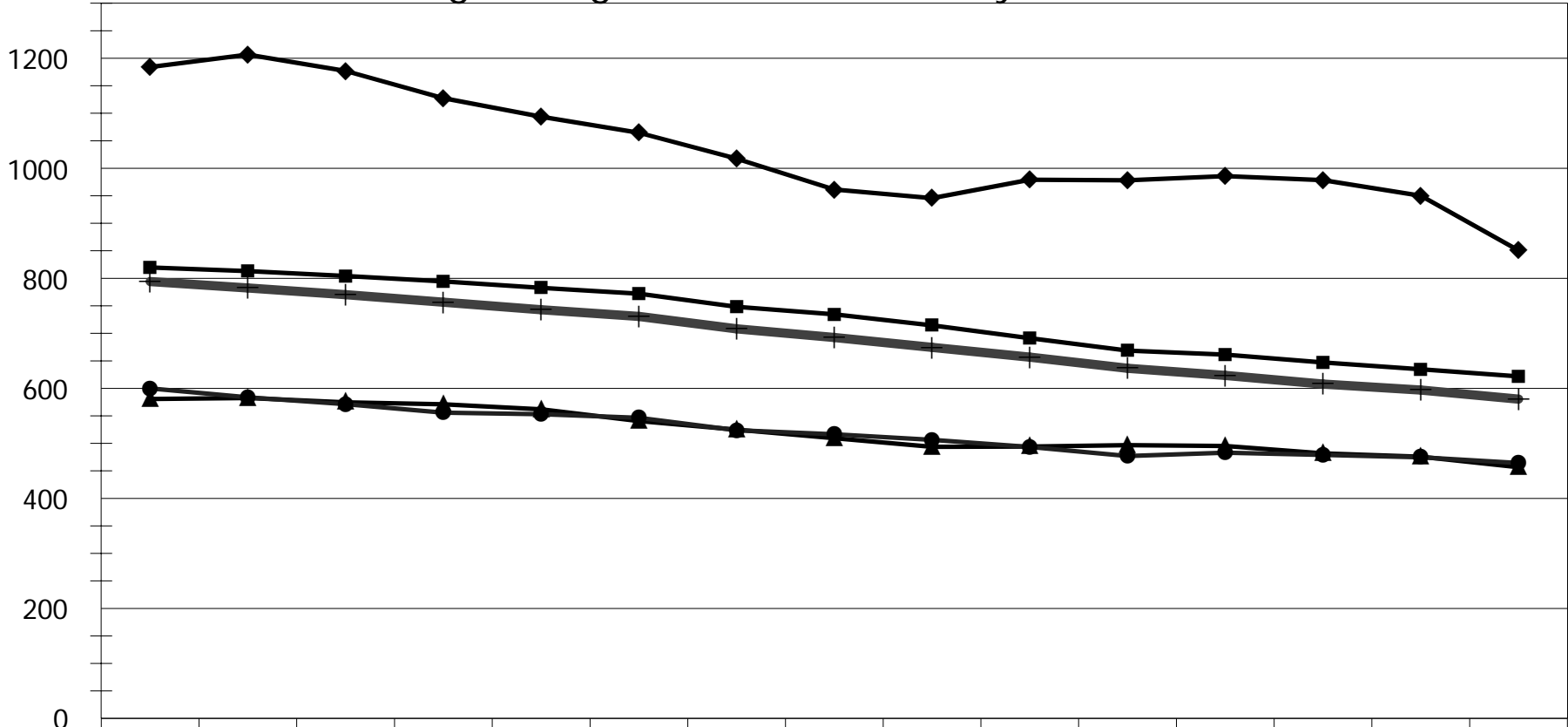
Rates are age-adjusted and standardized to Year 2000 population

Source Data: California Department of Health Services, Center for Health Statistics, Death Records 1990-2008

Mortality By Race/Ethnicity

5-Year Moving Averages, San Mateo County, 1990-2008

Deaths Per 100,000 Population



	90-94	91-95	92-96	93-97	94-98	95-99	96-00	97-01	98-02	99-03	00-04	01-05	02-06	03-07	04-08
All Races	794.1	782.4	770.4	756.5	743	730.7	708.1	692.5	674.5	656.7	636.3	623.4	607.9	596.9	580.3
Asian	599.8	583.8	571.4	555.8	552.9	546.4	523.8	516.6	506.4	493.5	476.9	483.1	479	474.8	464.2
Black	1183.9	1206.6	1176.9	1127.5	1093.8	1064.5	1017.5	961.3	945.6	979.1	978.2	985.8	978.4	950.1	850.6
Hispanic	580.6	582.4	574.7	571.1	561.8	540.5	524.8	509.5	493.7	494.1	496.8	495.3	481.8	475.7	456.7
White	819.8	813.1	804.3	794.3	782.6	772.1	748.2	734.5	714.4	691.1	668.6	661.3	647	634.7	621.6

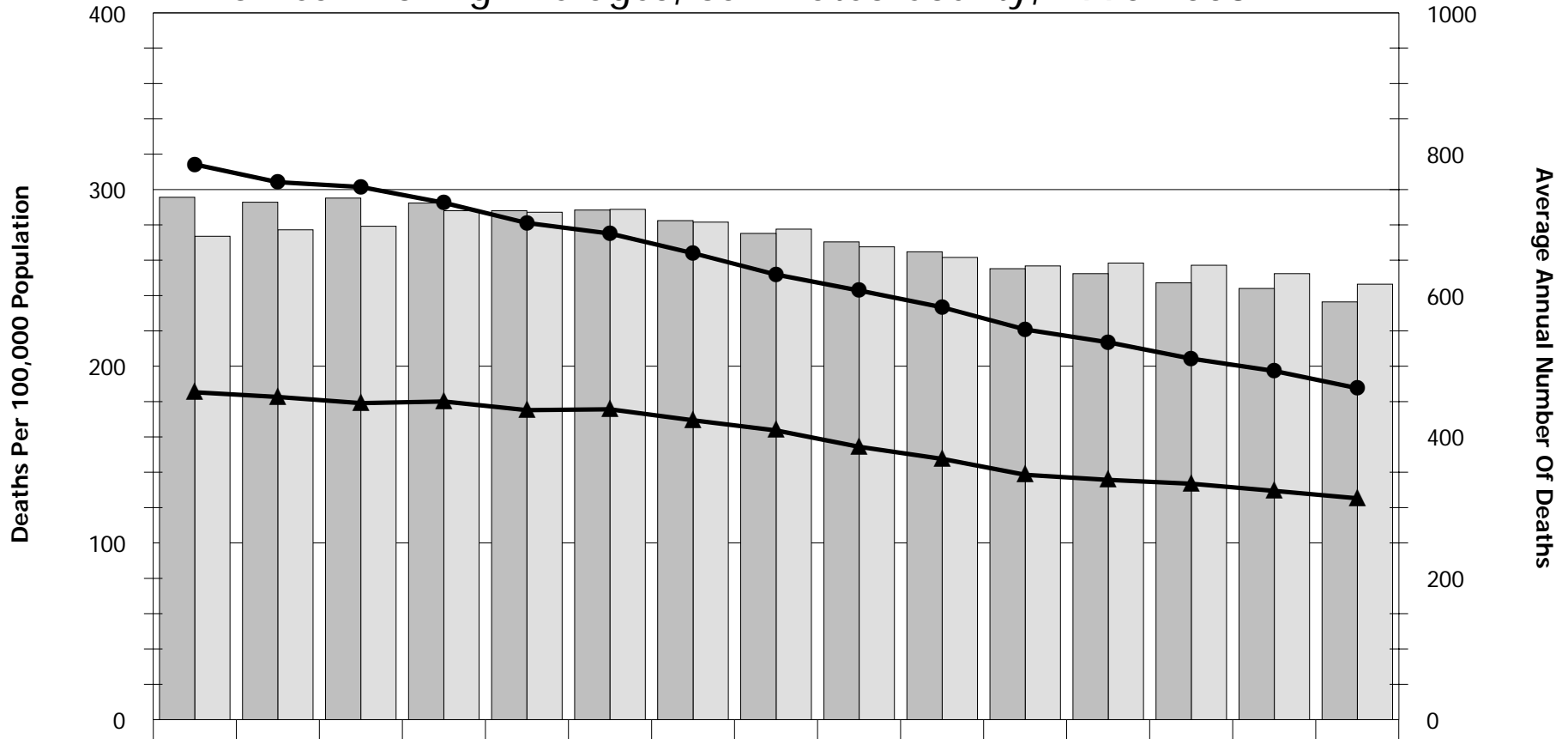
Rates are age-adjusted and standardized to Year 2000 population

Source Data: California Department of Health Services, Center for Health Statistics, Death Records 1990-2008

MORT-3

Heart Disease Mortality By Sex

5-Year Moving Averages, San Mateo County, 1990-2008

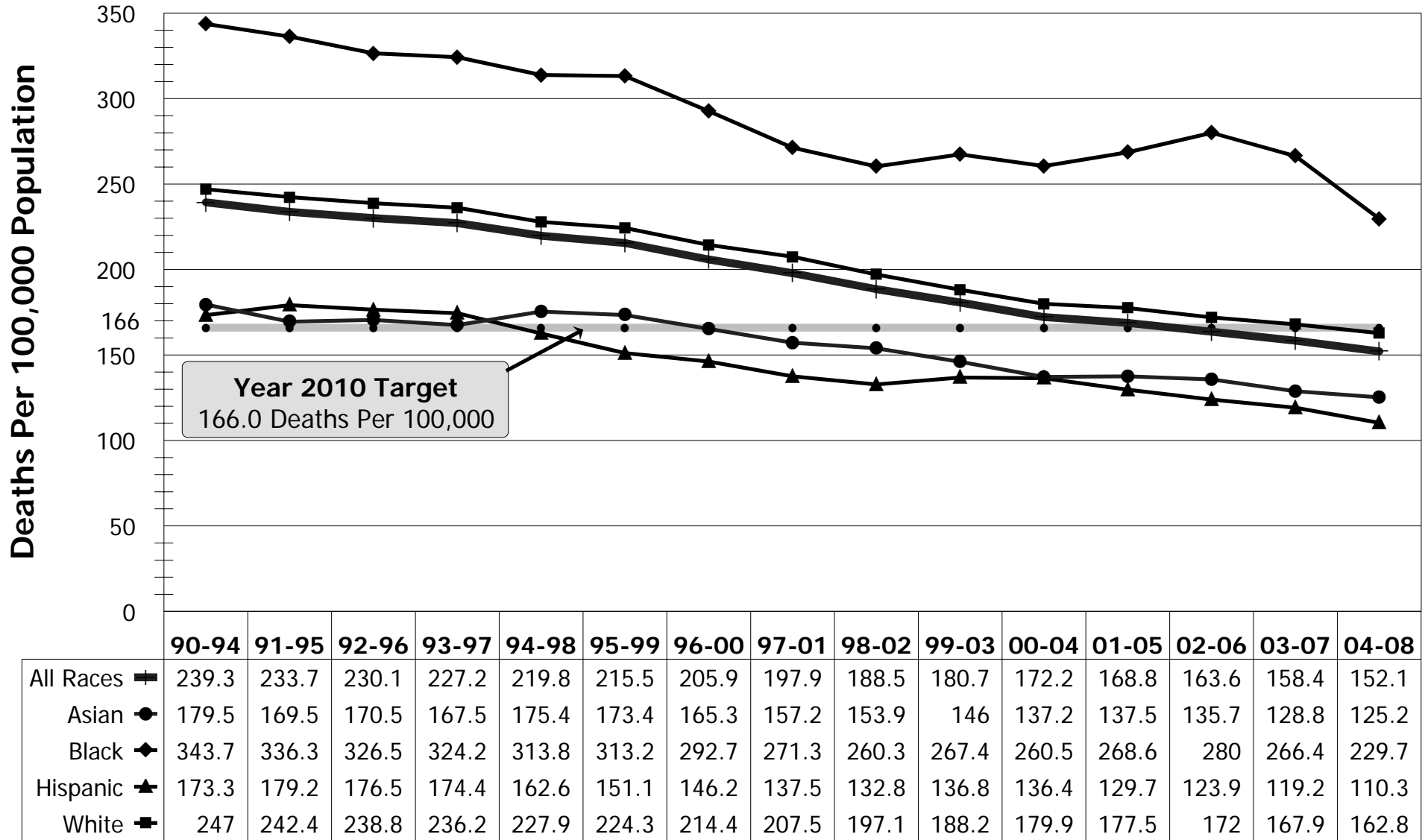


	90-94	91-95	92-96	93-97	94-98	95-99	96-00	97-01	98-02	99-03	00-04	01-05	02-06	03-07	04-08
Overall Rate	239.3	233.7	230.1	227.2	219.8	215.5	205.9	197.9	188.5	180.7	172.2	168.8	163.6	158.4	152.1
Number Male	739	732	738	731	720	721	706	688	676	662	638	631	618	610	591
Rate Male	314.2	304.2	301.5	292.5	281.1	275.1	264	251.9	242.9	233.4	220.8	213.6	204.3	197.3	187.6
Number Female	684	693	698	720	718	722	704	694	669	654	642	646	643	631	616
Rate Female	185.3	182.6	179.1	180.1	175.2	175.6	169.4	163.7	154.4	147.6	138.6	135.7	133.5	129.5	125.3

Rates are age-adjusted and standardized to Year 2000 population; 1990-1998 numbers and rates have been adjusted to comparability ratio 0.9981
 Source Data: California Department of Health Services, Center for Health Statistics, Death Records 1990-2008

Heart Disease Mortality By Race/Ethnicity

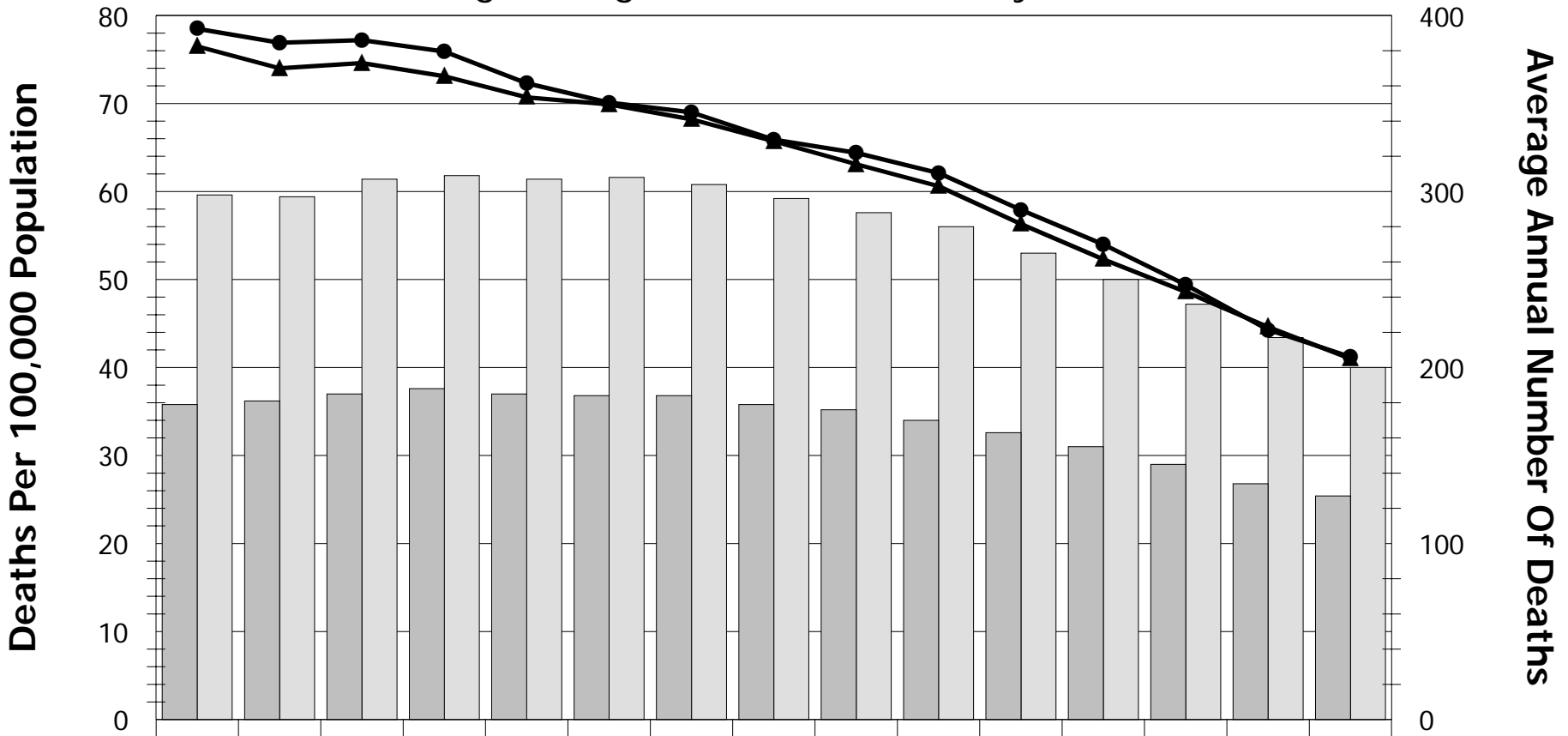
5-Year Moving Averages, San Mateo County, 1990-2008



Rates are age-adjusted and standardized to Year 2000 population; 1990-1998 rates have been adjusted to comparability ratio 0.9981
 Source Data: California Department of Health Services, Center for Health Statistics, Death Records 1990-2008

Cerebrovascular Disease Mortality By Sex

5-Year Moving Averages, San Mateo County, 1990-2008

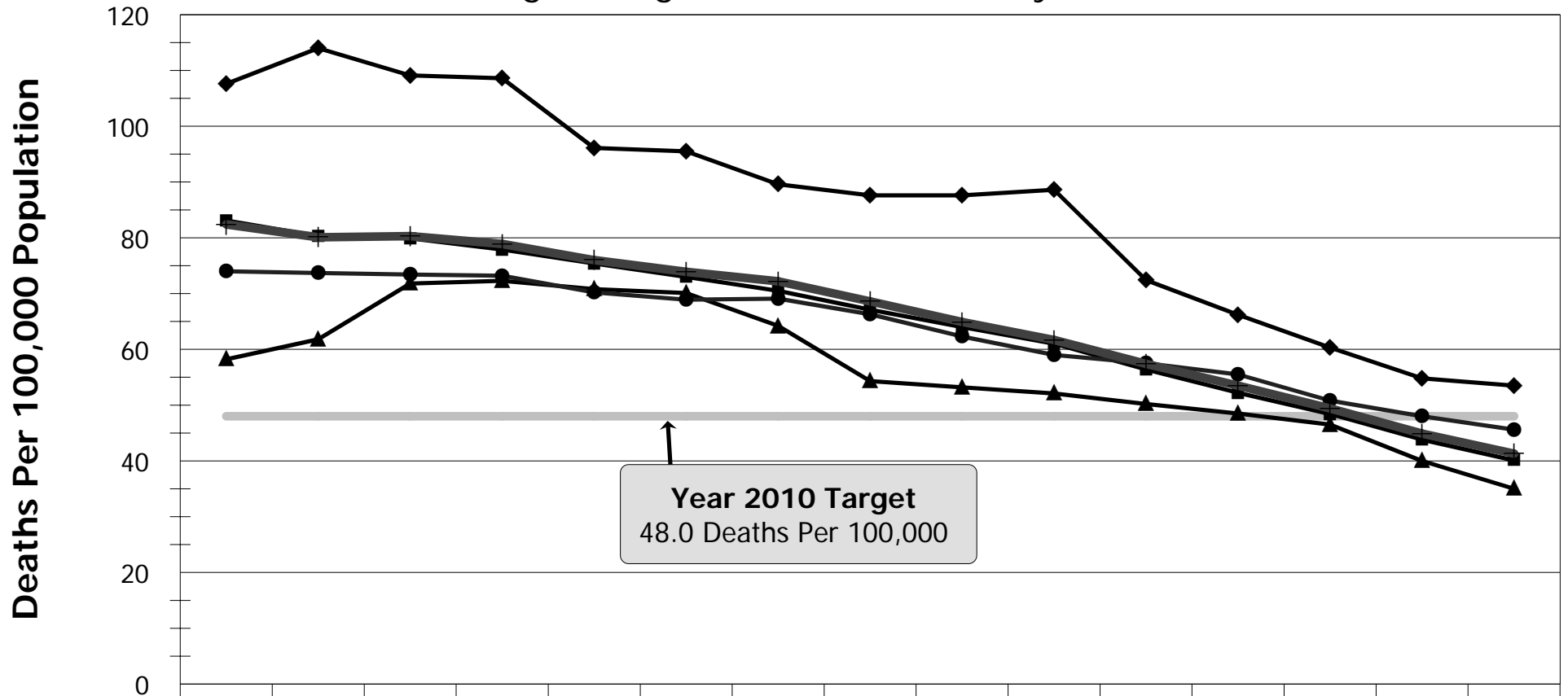


	90-94	91-95	92-96	93-97	94-98	95-99	96-00	97-01	98-02	99-03	00-04	01-05	02-06	03-07	04-08
Overall Rate	82.4	80.1	80.3	78.9	76	73.9	72.2	68.6	64.9	61.7	57.4	53.5	49.4	44.9	41.3
Number Male	179	181	185	188	185	184	184	179	176	170	163	155	145	134	127
Rate Male	78.5	76.9	77.2	75.9	72.3	70.1	69	65.9	64.4	62.1	57.9	54	49.4	44.3	41.2
Number Female	298	297	307	309	307	308	304	296	288	280	265	250	236	217	200
Rate Female	76.5	74	74.6	73.1	70.7	69.9	68.2	65.7	63.1	60.6	56.3	52.3	48.6	44.6	41

Rates are age-adjusted and standardized to Year 2000 population; 1990-1998 numbers and rates have been adjusted to comparability ratio 1.0588
 Source Data: California Department of Health Services, Center for Health Statistics, Death Records 1990-2008

Cerebrovascular Disease Mortality By Race/Ethnicity

5-Year Moving Averages, San Mateo County, 1990-2008



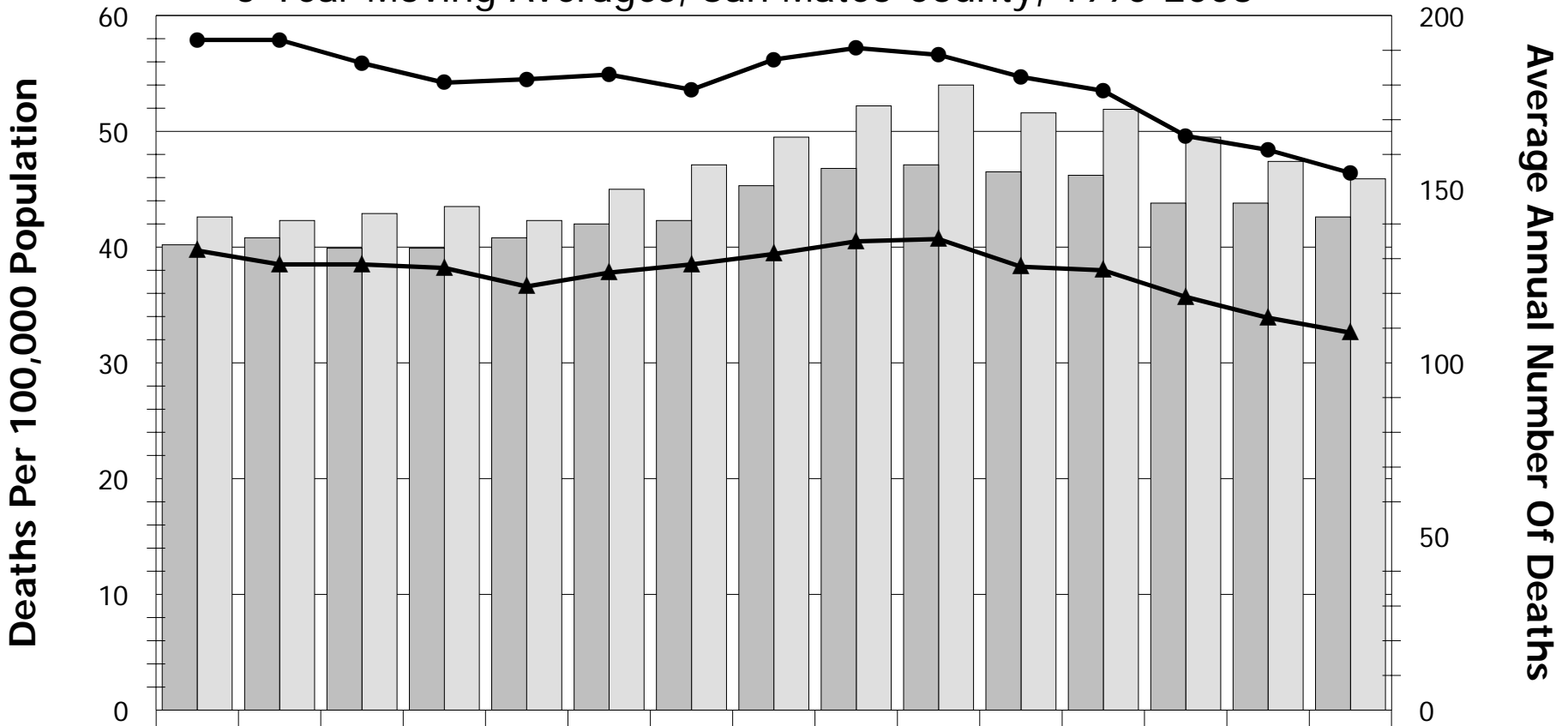
	90-94	91-95	92-96	93-97	94-98	95-99	96-00	97-01	98-02	99-03	00-04	01-05	02-06	03-07	04-08
All Races	82.4	80.1	80.3	78.9	76	73.9	72.2	68.6	64.9	61.7	57.4	53.5	49.4	44.9	41.3
Asian	74	73.7	73.4	73.2	70.2	68.9	69.1	66.3	62.3	59	57.5	55.5	50.8	48	45.6
Black	107.6	114	109.1	108.6	96.1	95.5	89.6	87.6	87.6	88.6	72.4	66.2	60.3	54.8	53.5
Hispanic	58.2	61.8	71.8	72.3	70.8	70.1	64.2	54.3	53.2	52.1	50.2	48.5	46.5	40	35
White	83.1	80.3	79.9	77.9	75.4	73	70.5	67.1	64	61	56.4	52.2	48.4	43.8	40.1

Rates are age-adjusted and standardized to Year 2000 population; 1990-1998 rates have been adjusted to comparability ratio 1.0588
 Source Data: California Department of Health Services, Center for Health Statistics, Death Records 1990-2008

MORT-7

Respiratory Disease Mortality By Sex

5-Year Moving Averages, San Mateo County, 1990-2008

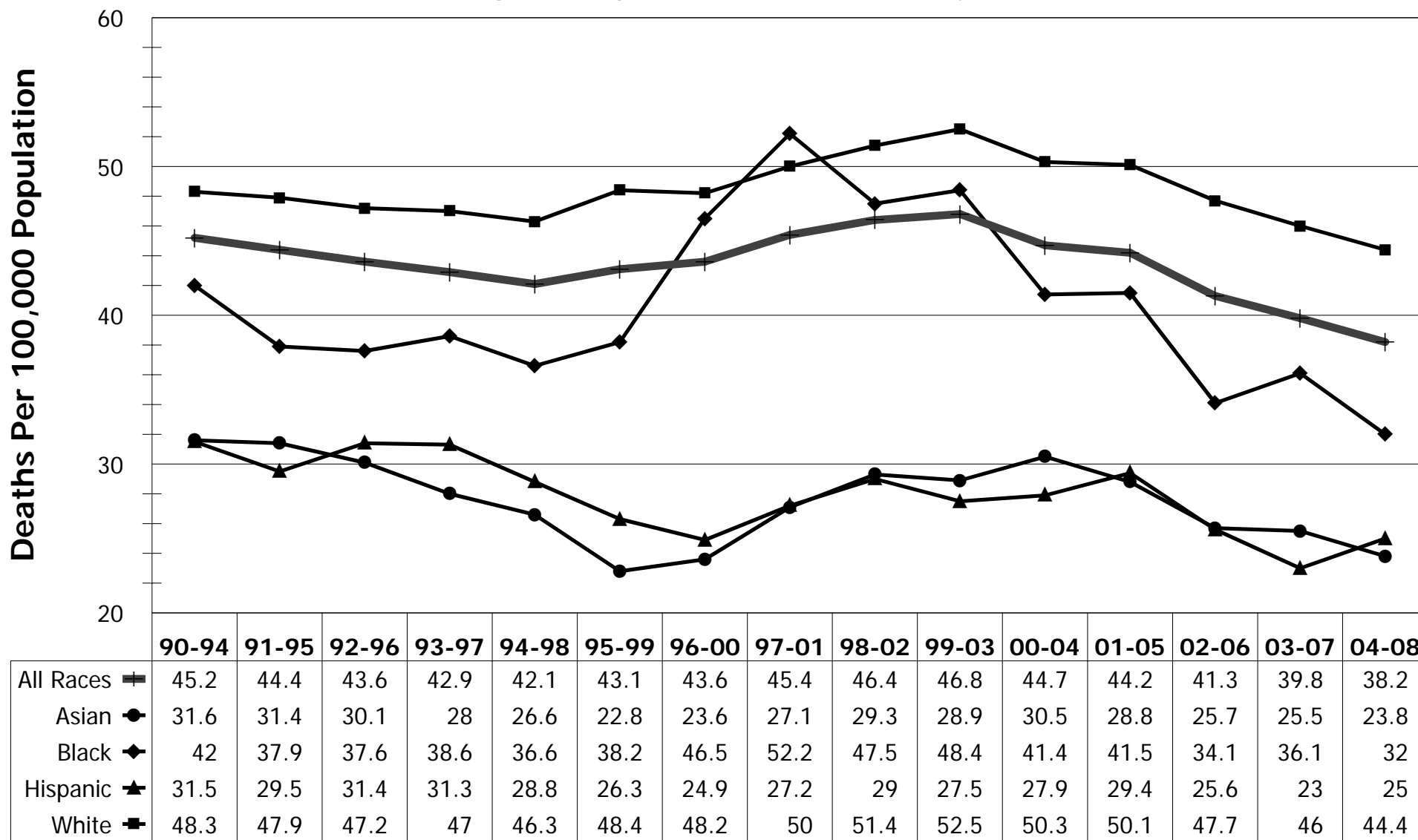


	90-94	91-95	92-96	93-97	94-98	95-99	96-00	97-01	98-02	99-03	00-04	01-05	02-06	03-07	04-08
Overall Rate	45.2	44.4	43.6	42.9	42.1	43.1	43.6	45.4	46.4	46.8	44.7	44.2	41.3	39.8	38.2
Number Male	134	136	133	133	136	140	141	151	156	157	155	154	146	146	142
Rate Male	57.9	57.9	55.9	54.2	54.5	54.9	53.6	56.2	57.2	56.6	54.7	53.5	49.6	48.4	46.4
Number Female	142	141	143	145	141	150	157	165	174	180	172	173	165	158	153
Rate Female	39.7	38.5	38.5	38.2	36.6	37.8	38.5	39.4	40.5	40.7	38.3	38	35.7	33.9	32.6

Rates are age-adjusted and standardized to Year 2000 population; 1990-1998 numbers and rates have been adjusted to comparability ratio 0.9746
 Source Data: California Department of Health Services, Center for Health Statistics, Death Records 1990-2008

Respiratory Disease Mortality By Race/Ethnicity

5-Year Moving Averages, San Mateo County, 1990-2008



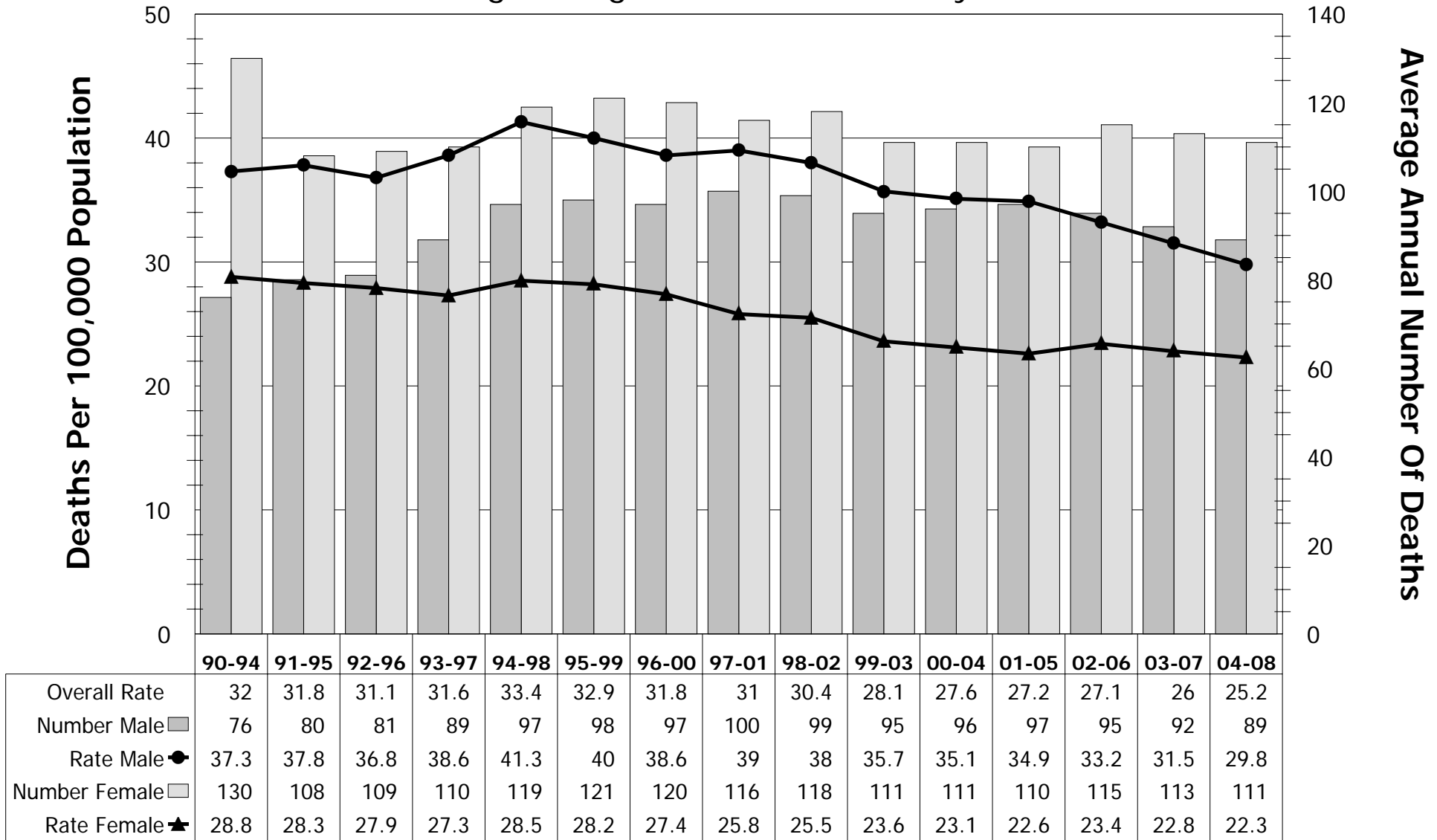
Rates are age-adjusted and standardized to Year 2000 population; 1990-1998 rates have been adjusted to comparability ratio 0.9746

Source Data: California Department of Health Services, Center for Health Statistics, Death Records 1990-2008

MORT-9

Pneumonia And Influenza Mortality By Sex

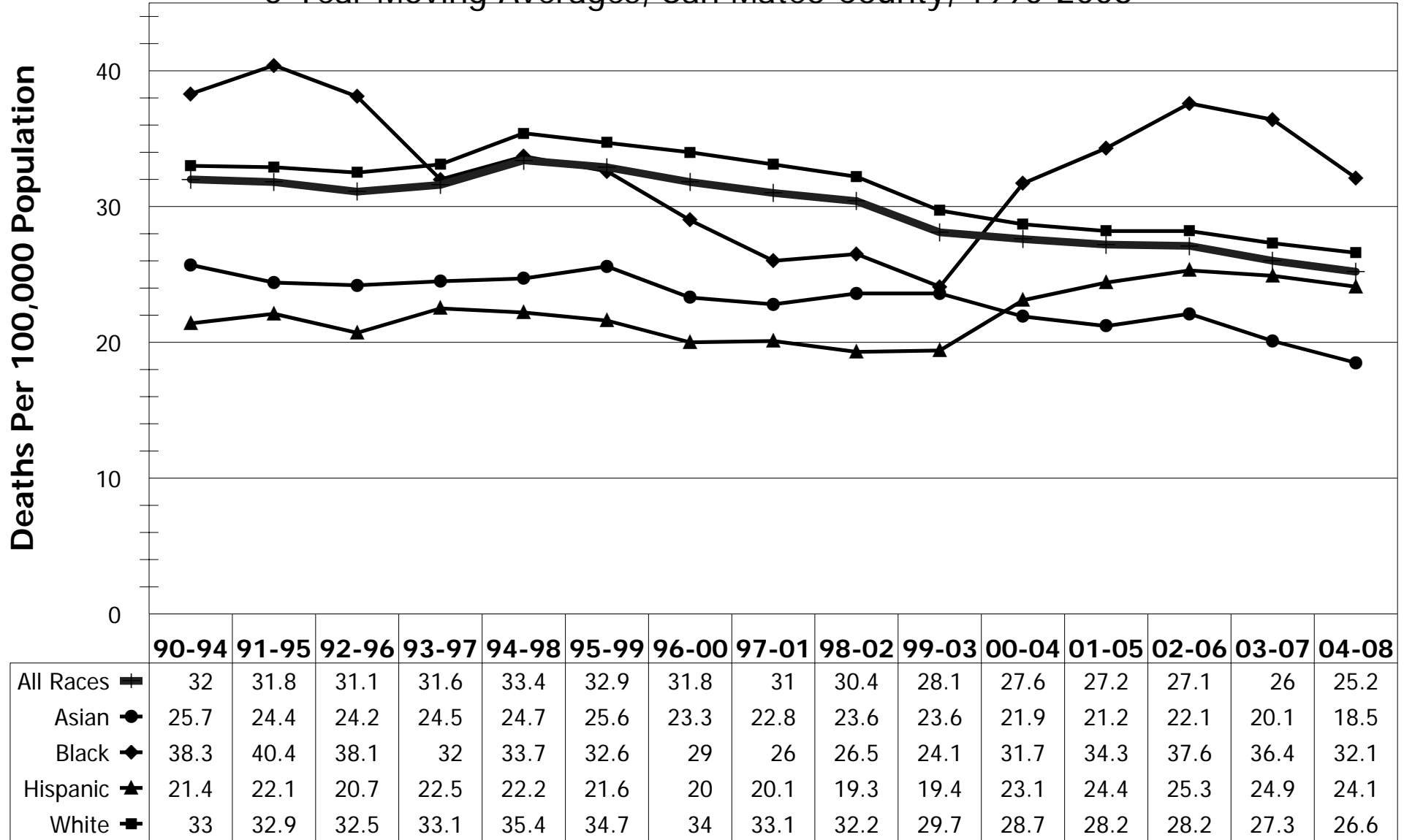
5-Year Moving Averages, San Mateo County, 1990-2008



Rates are age-adjusted and standardized to Year 2000 population; 1990-1998 numbers and rates have been adjusted to comparability ratio 0.6982
 Source Data: California Department of Health Services, Center for Health Statistics, Death Records 1990-2008

Pneumonia And Influenza Mortality By Race/Ethnicity

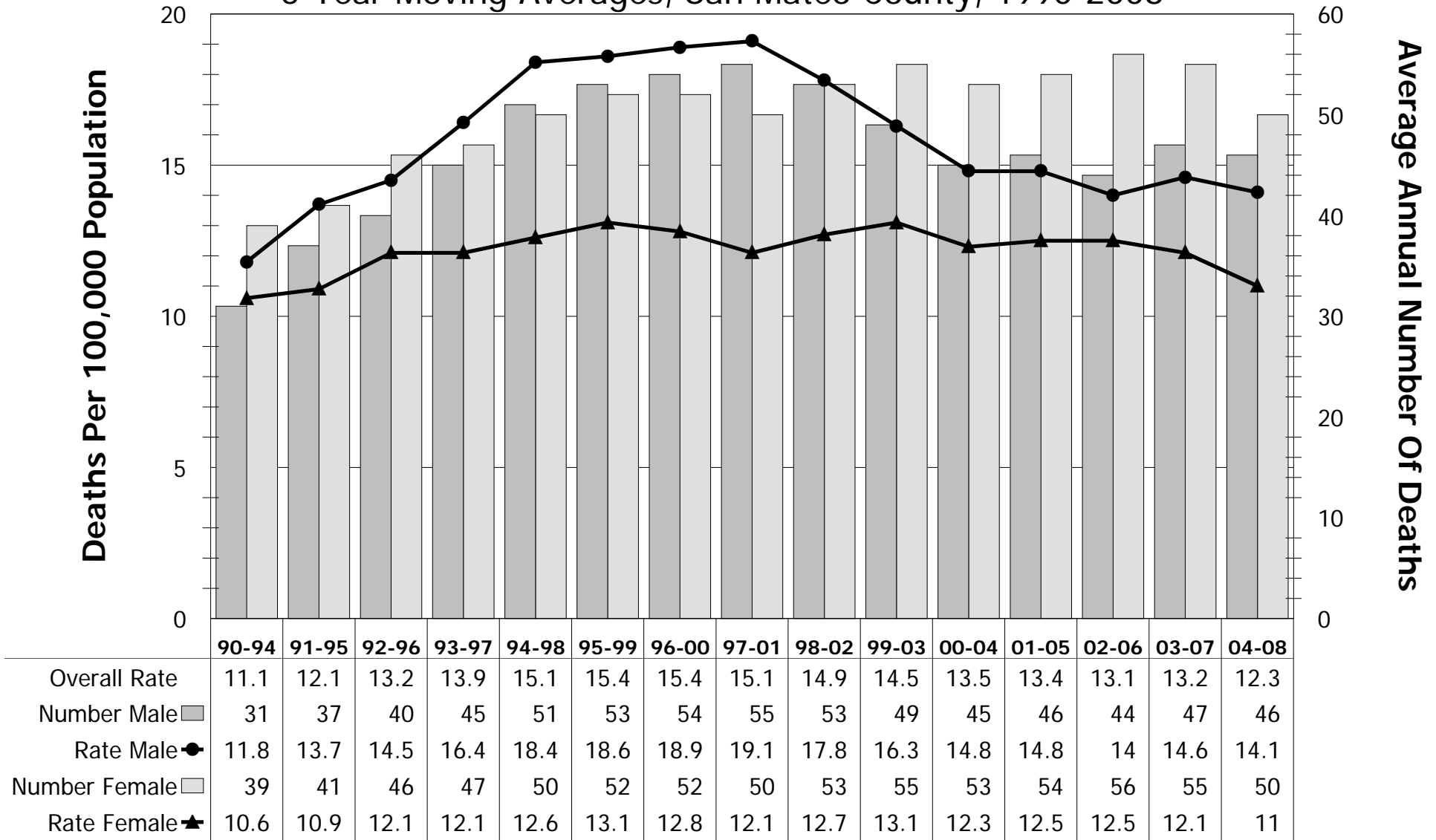
5-Year Moving Averages, San Mateo County, 1990-2008



Rates are age-adjusted and standardized to Year 2000 population; 1990-1998 rates have been adjusted to comparability ratio 0.6982
 Source Data: California Department of Health Services, Center for Health Statistics, Death Records 1990-2008

Diabetes Mortality By Sex

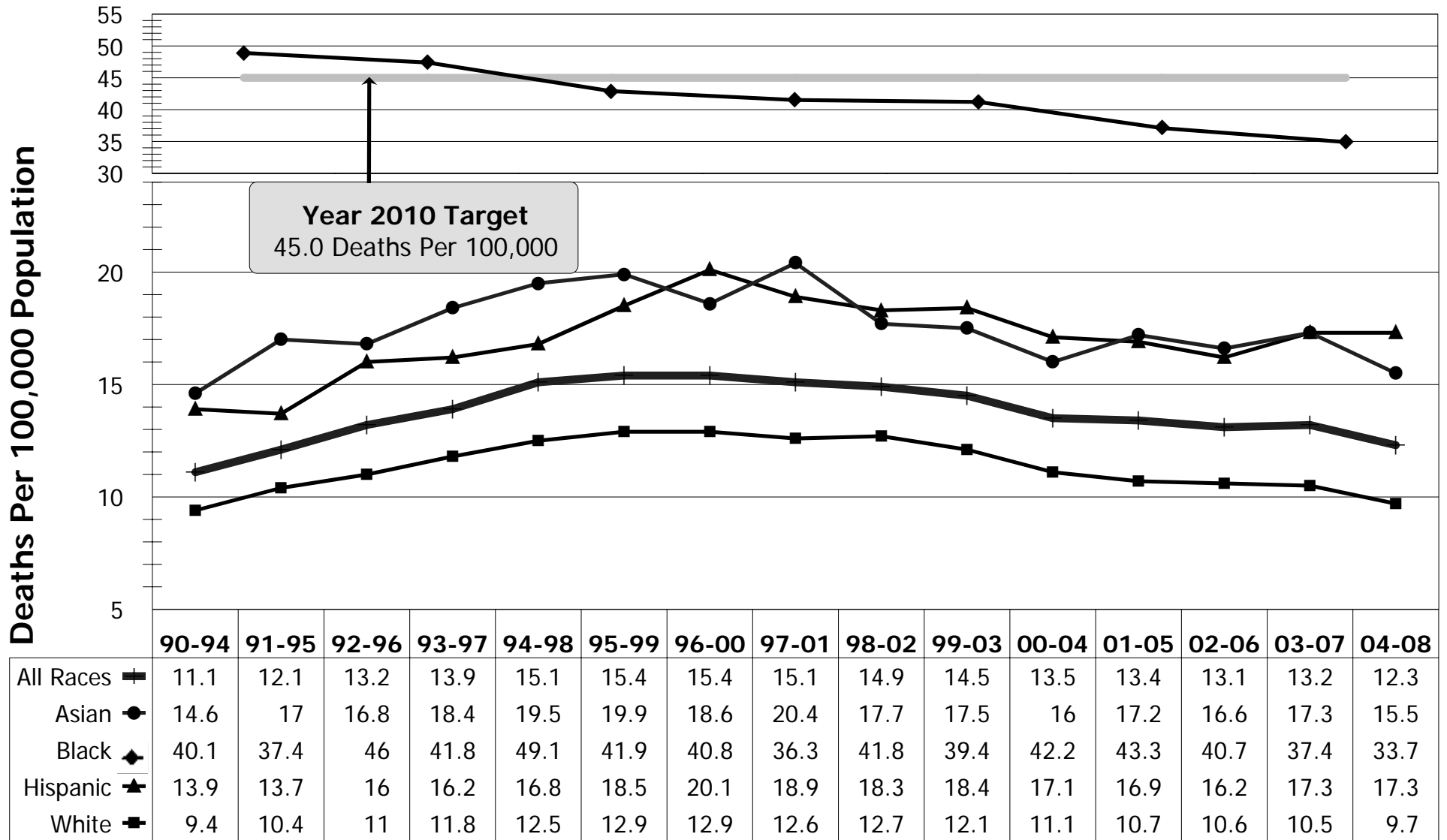
5-Year Moving Averages, San Mateo County, 1990-2008



Rates are age-adjusted and standardized to Year 2000 population; 1990-1998 numbers and rates have been adjusted to comparability ratio 1.0082
 Source Data: California Department of Health Services, Center for Health Statistics, Death Records 1990-2008

Diabetes Mortality By Race/Ethnicity

5-Year Moving Averages, San Mateo County, 1990-2008

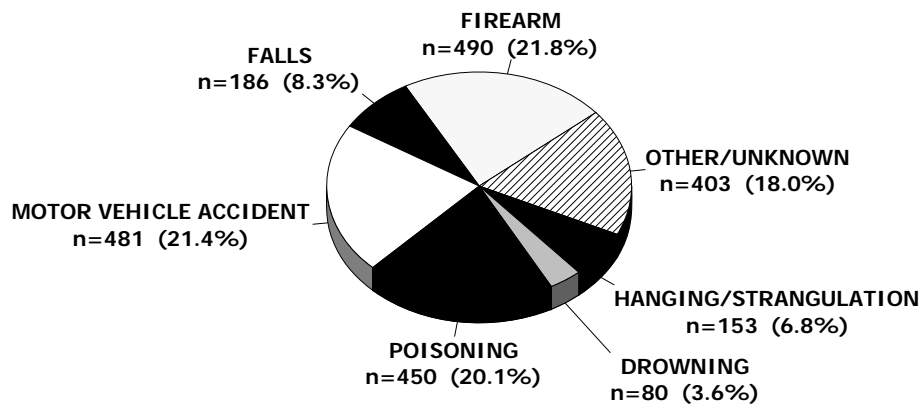


Rates are age-adjusted and standardized to Year 2000 population; 1990-1998 rates have been adjusted to comparability ratio 1.0082
 Source Data: California Department of Health Services, Center for Health Statistics, Death Records 1990-2008

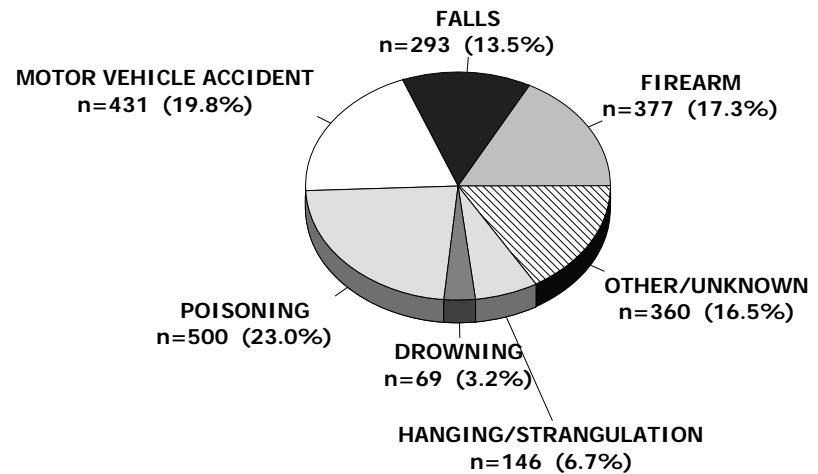
Major Causes Of Deaths Due To Injury

Cumulative Data, San Mateo County, 1991-2008

1991-1999



2000-2008

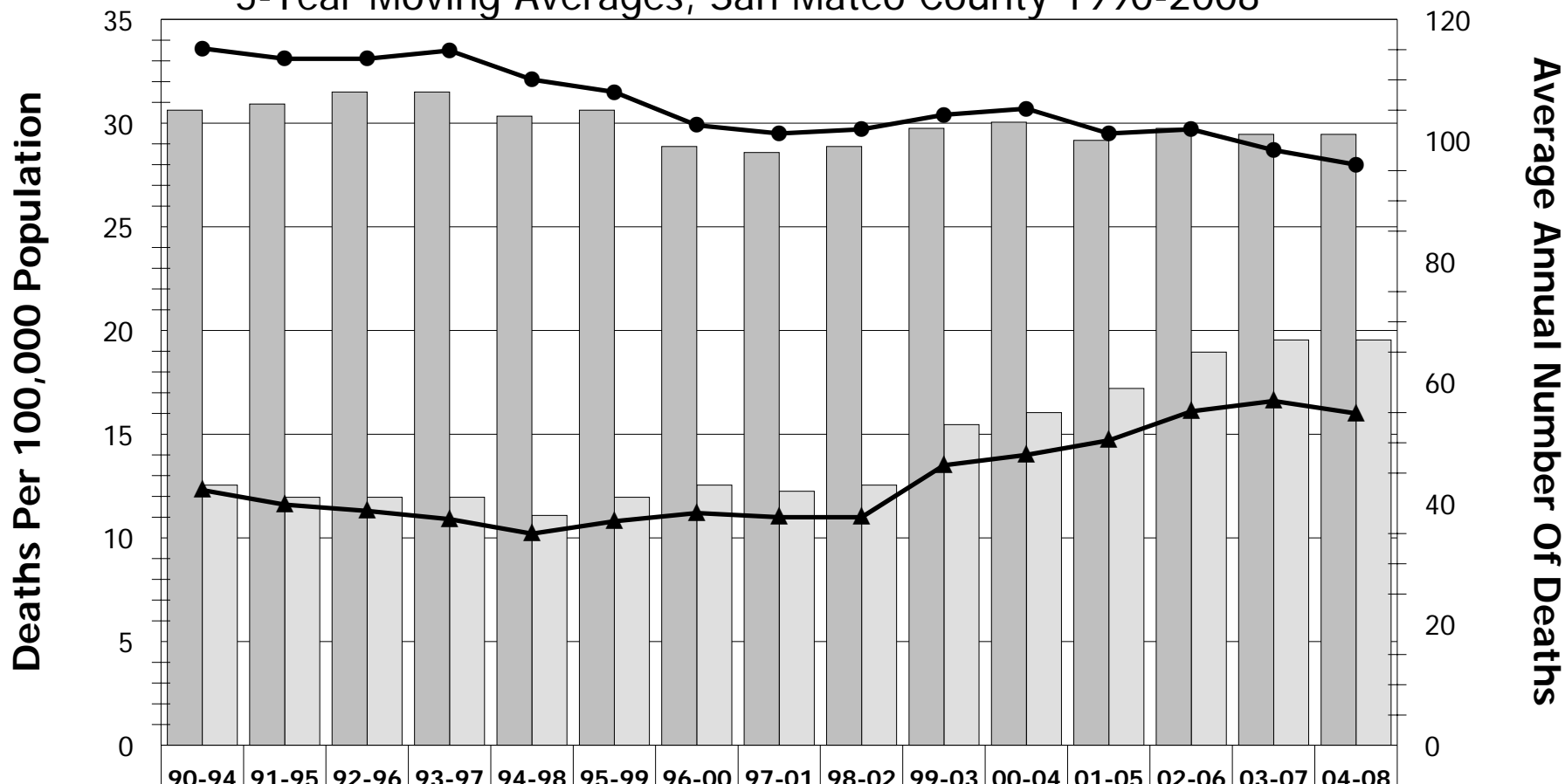


There were 4419 total injury deaths (2765 total deaths due to unintentional injury and 1654 total deaths due to intentional injury) from 1991-2008 (numbers have not been adjusted for comparability ratios)

Source Data: California Department of Health Services, Center for Health Statistics, Death Records 1991-2008

Unintentional Injury Mortality By Sex

5-Year Moving Averages, San Mateo County 1990-2008



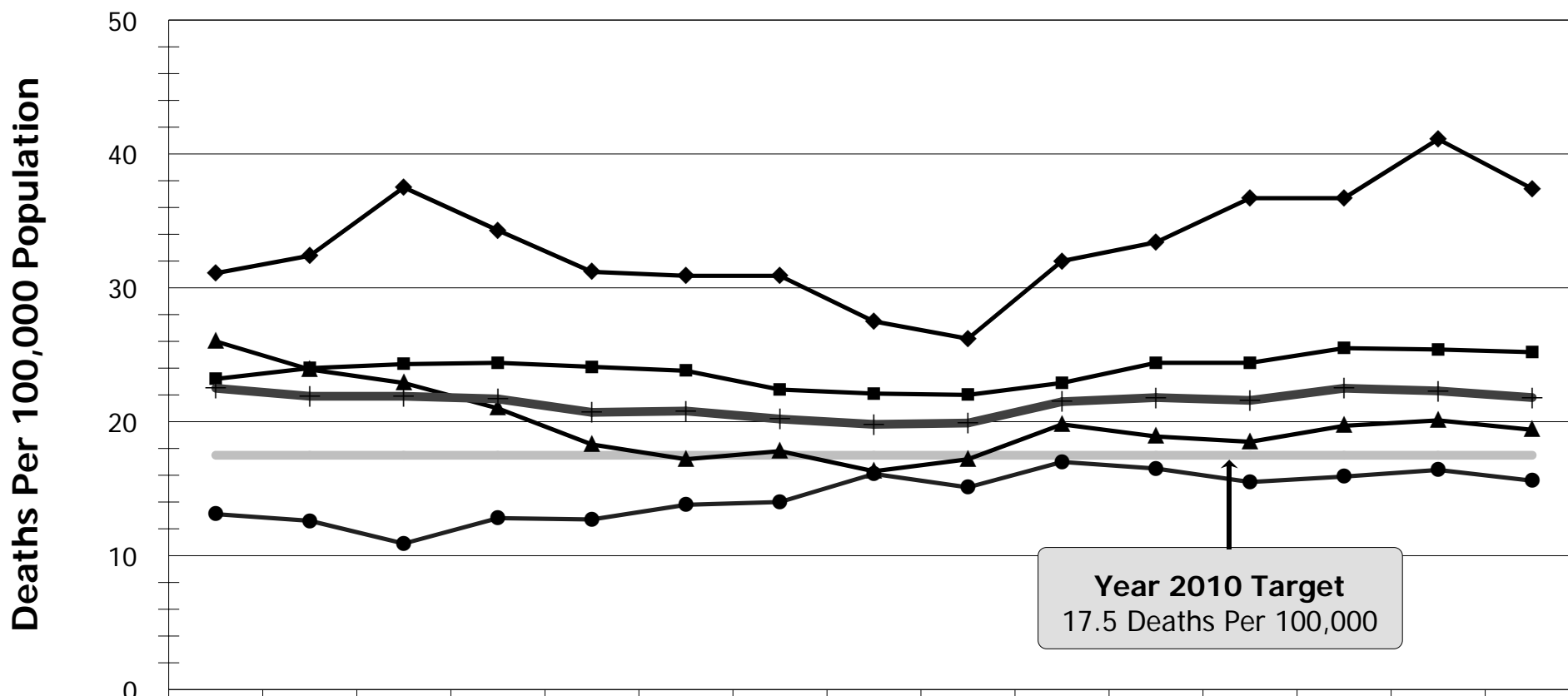
	90-94	91-95	92-96	93-97	94-98	95-99	96-00	97-01	98-02	99-03	00-04	01-05	02-06	03-07	04-08
Overall Rate	22.5	21.9	21.9	21.7	20.7	20.8	20.2	19.8	19.9	21.5	21.8	21.6	22.5	22.3	21.8
Number Male	105	106	108	108	104	105	99	98	99	102	103	100	102	101	101
Rate Male	33.6	33.1	33.1	33.5	32.1	31.5	29.9	29.5	29.7	30.4	30.7	29.5	29.7	28.7	28
Number Female	43	41	41	41	38	41	43	42	43	53	55	59	65	67	67
Rate Female	12.3	11.6	11.3	10.9	10.2	10.8	11.2	11	11	13.5	14	14.7	16.1	16.6	16

Rates are age-adjusted and standardized to Year 2000 population; 1990-1998 numbers and rates have been adjusted to comparability ratio 1.0305

Source Data: California Department of Health Services, Center for Health Statistics, Death Records 1990-2008

Unintentional Injury Mortality By Race/Ethnicity

5-Year Moving Averages, San Mateo County, 1990-2008



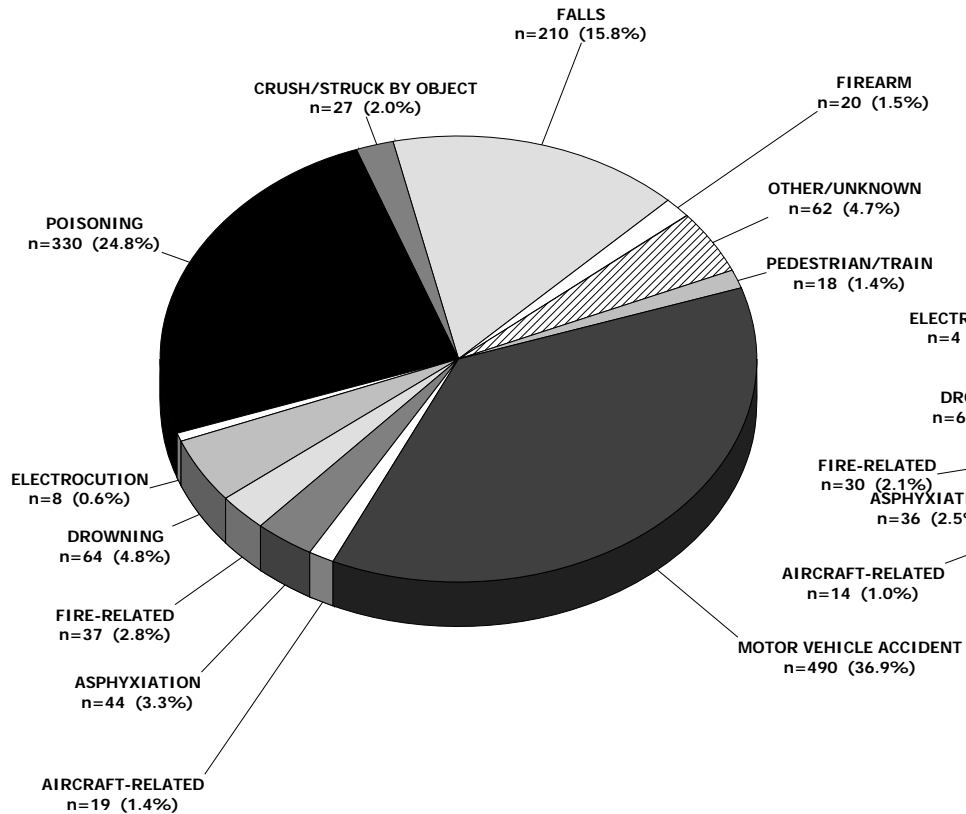
	90-94	91-95	92-96	93-97	94-98	95-99	96-00	97-01	98-02	99-03	00-04	01-05	02-06	03-07	04-08
All Races	22.5	21.9	21.9	21.7	20.7	20.8	20.2	19.8	19.9	21.5	21.8	21.6	22.5	22.3	21.8
Asian	13.1	12.6	10.9	12.8	12.7	13.8	14	16.1	15.1	17	16.5	15.5	15.9	16.4	15.6
Black	31.1	32.4	37.5	34.3	31.2	30.9	30.9	27.5	26.2	32	33.4	36.7	36.7	41.1	37.4
Hispanic	26	23.9	22.9	21	18.3	17.2	17.8	16.3	17.2	19.8	18.9	18.5	19.7	20.1	19.4
White	23.2	24	24.3	24.4	24.1	23.8	22.4	22.1	22	22.9	24.4	24.4	25.5	25.4	25.2

Rates are age-adjusted and standardized to Year 2000 population; 1990-1998 rates have been adjusted to comparability ratio 1.0305
 Source Data: California Department of Health Services, Center for Health Statistics, Death Records 1990-2008

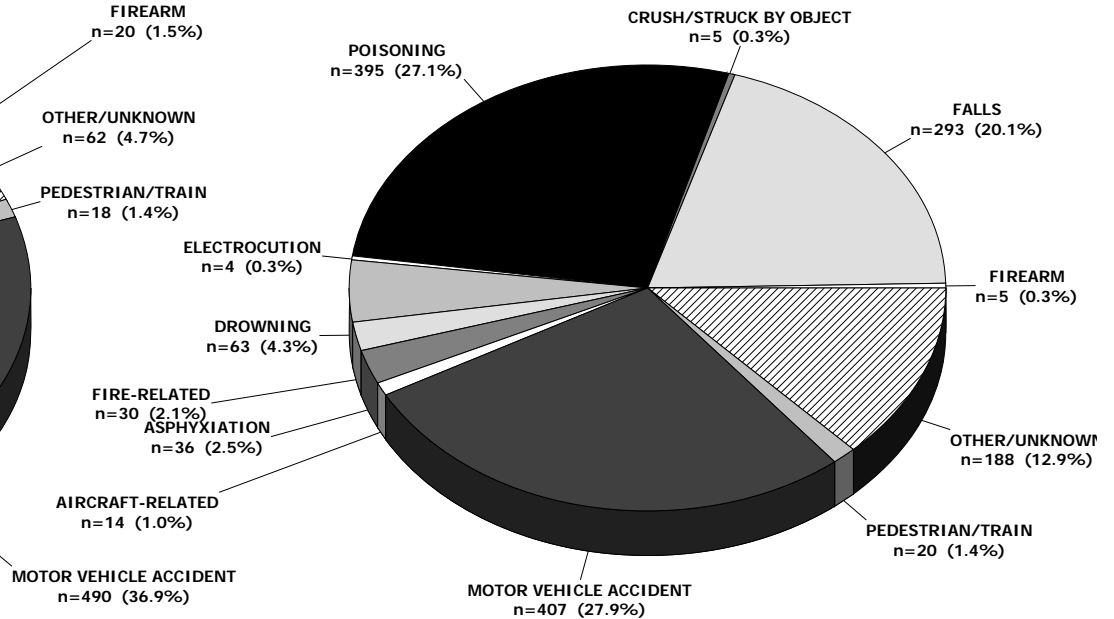
Major Causes Of Deaths Due To Unintentional Injury

Cumulative Data, San Mateo County, 1991-2008

1991-1999



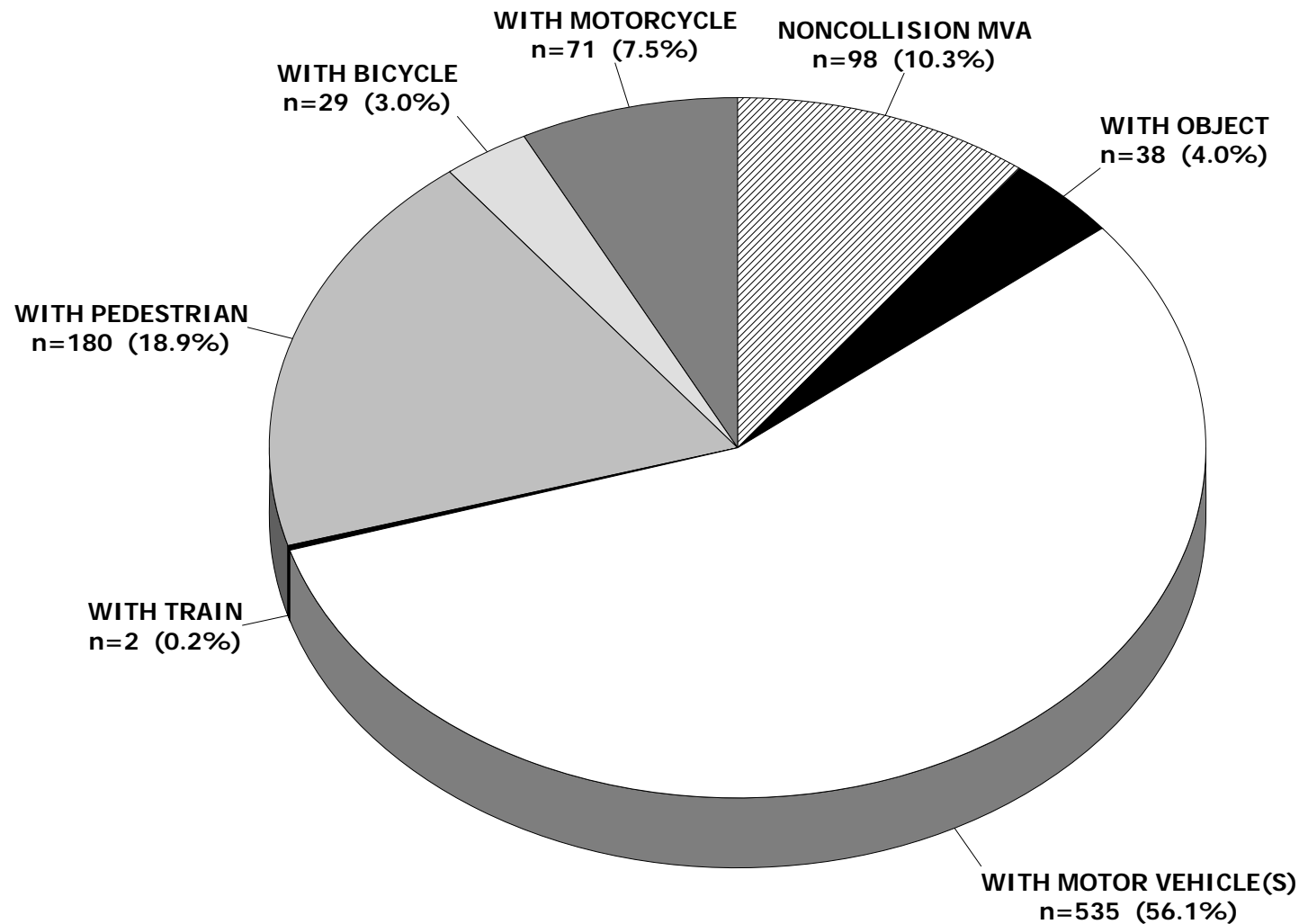
2000-2008



There were 2765 total deaths due to unintentional injury from 1991-2008 (numbers have not been adjusted for comparability ratios)
 Source Data: California Department of Health Services, Center for Health Statistics, Death Records 1991-2008

Major Causes Of Deaths Due To Motor Vehicle Accidents

Cumulative Data, San Mateo County, 1990-2008



There were 953 total deaths due to motor vehicle accidents from 1990-2008 (numbers have not been adjusted for comparability ratios)

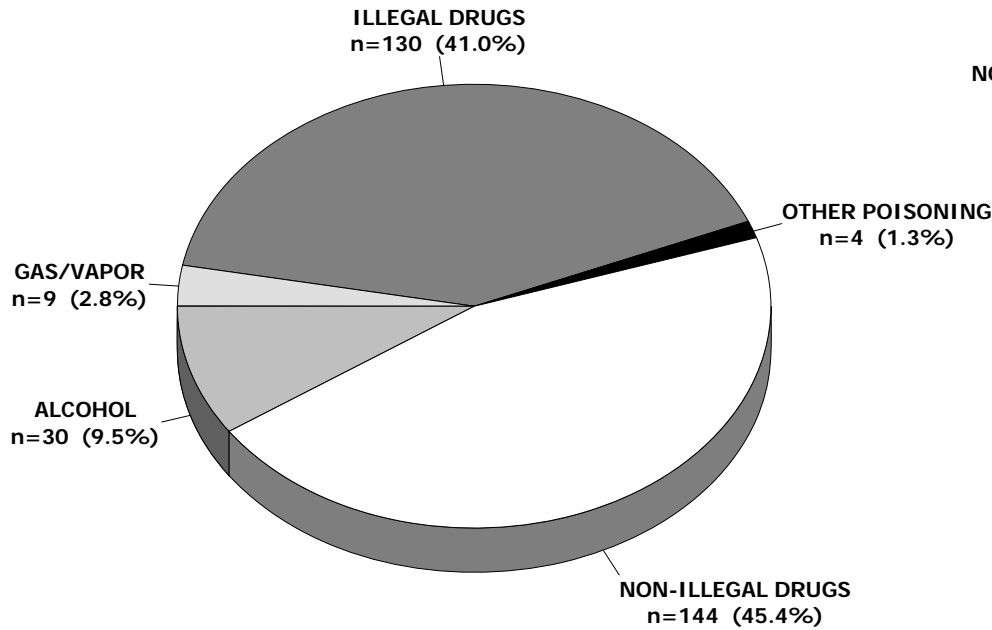
Source Data: California Department of Health Services, Center for Health Statistics, Death Records 1990-2008

Note: It is possible that most accidents caused due to collisions with trains are classified as suicides

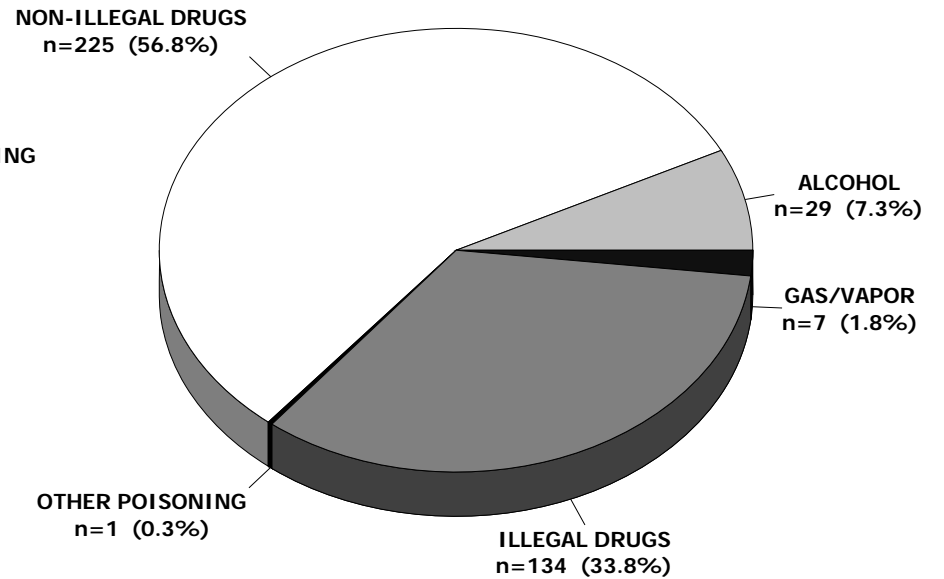
Major Causes Of Unintentional Poisoning Deaths

Cumulative Data, San Mateo County, 1991-2008

1991-1999



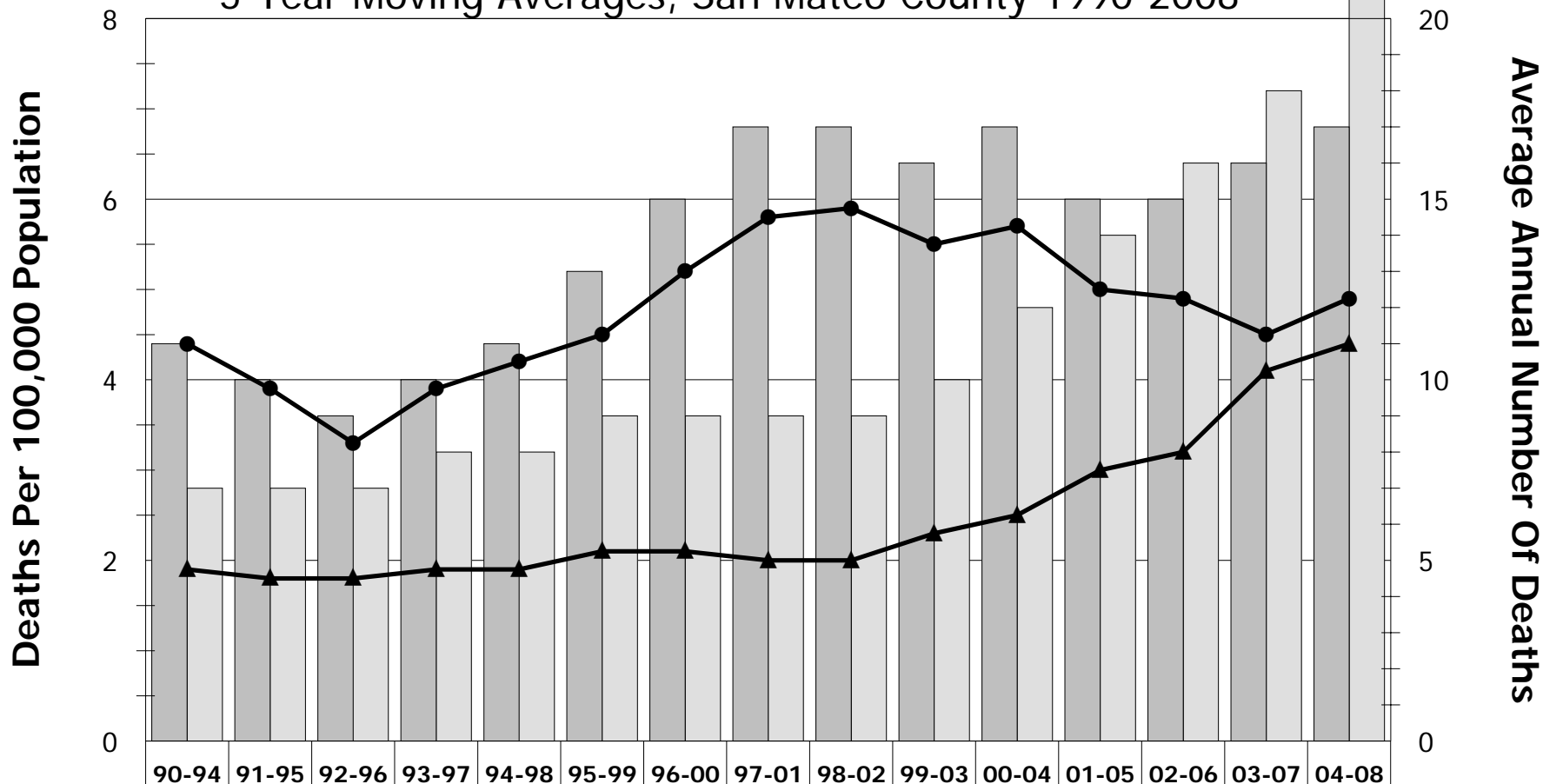
2000-2008



There were 713 total deaths due to unintentional poisoning from 1991-2008 (numbers have not been adjusted for comparability ratios)
Source Data: California Department of Health Services, Center for Health Statistics, Death Records 1991-2008

Mortality Due To Unintentional Falls By Sex

5-Year Moving Averages, San Mateo County 1990-2008



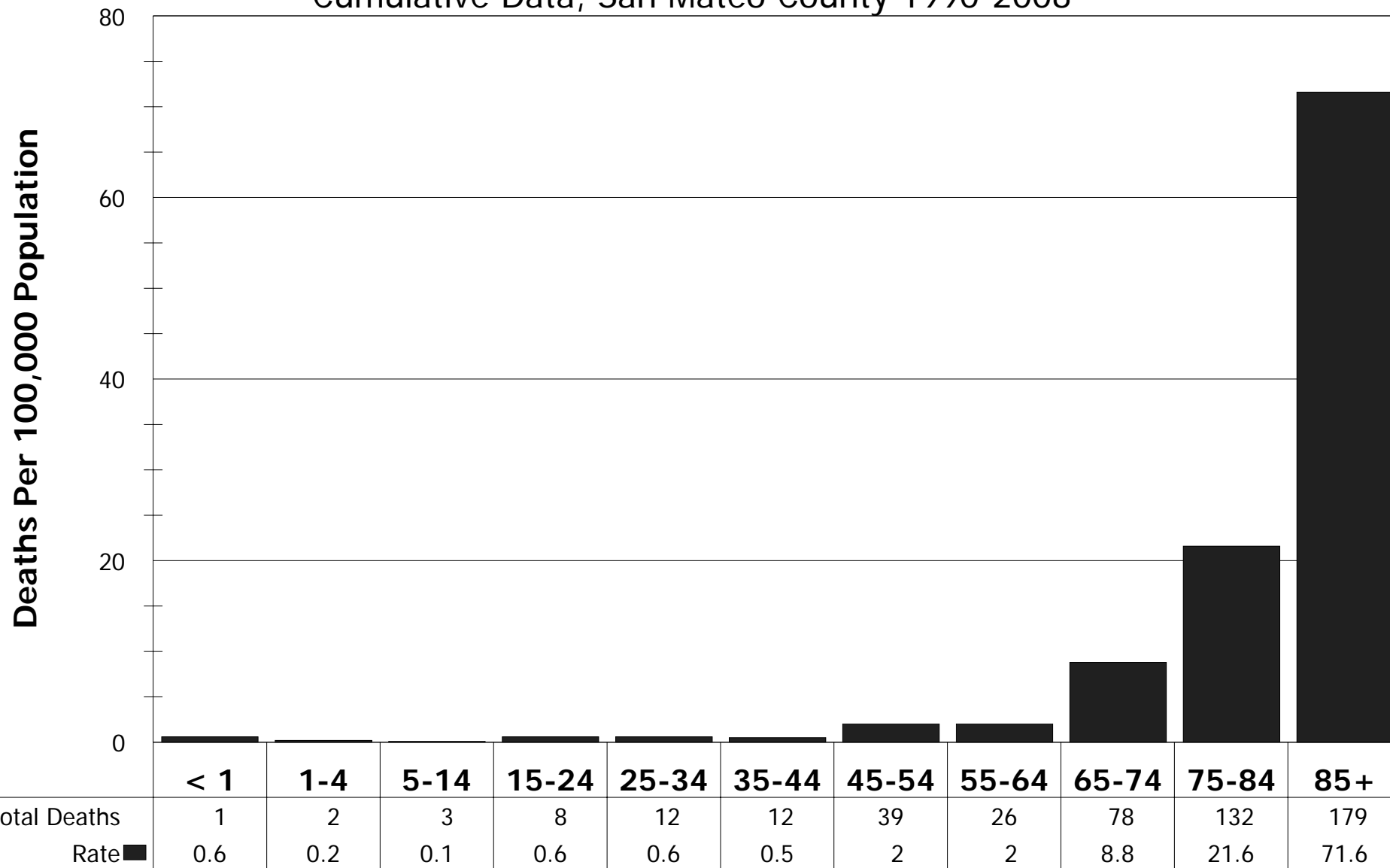
	90-94	91-95	92-96	93-97	94-98	95-99	96-00	97-01	98-02	99-03	00-04	01-05	02-06	03-07	04-08
Overall Rate	3	2.7	2.5	2.8	2.9	3.2	3.5	3.6	3.6	3.7	3.8	4	4.1	4.3	4.7
Number Male	11	10	9	10	11	13	15	17	17	16	17	15	15	16	17
Rate Male	4.4	3.9	3.3	3.9	4.2	4.5	5.2	5.8	5.9	5.5	5.7	5	4.9	4.5	4.9
Number Female	7	7	7	8	8	9	9	9	9	10	12	14	16	18	21
Rate Female	1.9	1.8	1.8	1.9	1.9	2.1	2.1	2	2	2.3	2.5	3	3.2	4.1	4.4

Rates are age-adjusted and standardized to Year 2000 population; 1990-1998 numbers and rates have been adjusted to comparability ratio 0.8409

Source Data: California Department of Health Services, Center for Health Statistics, Death Records 1990-2008

Mortality Due To Unintentional Falls By Age

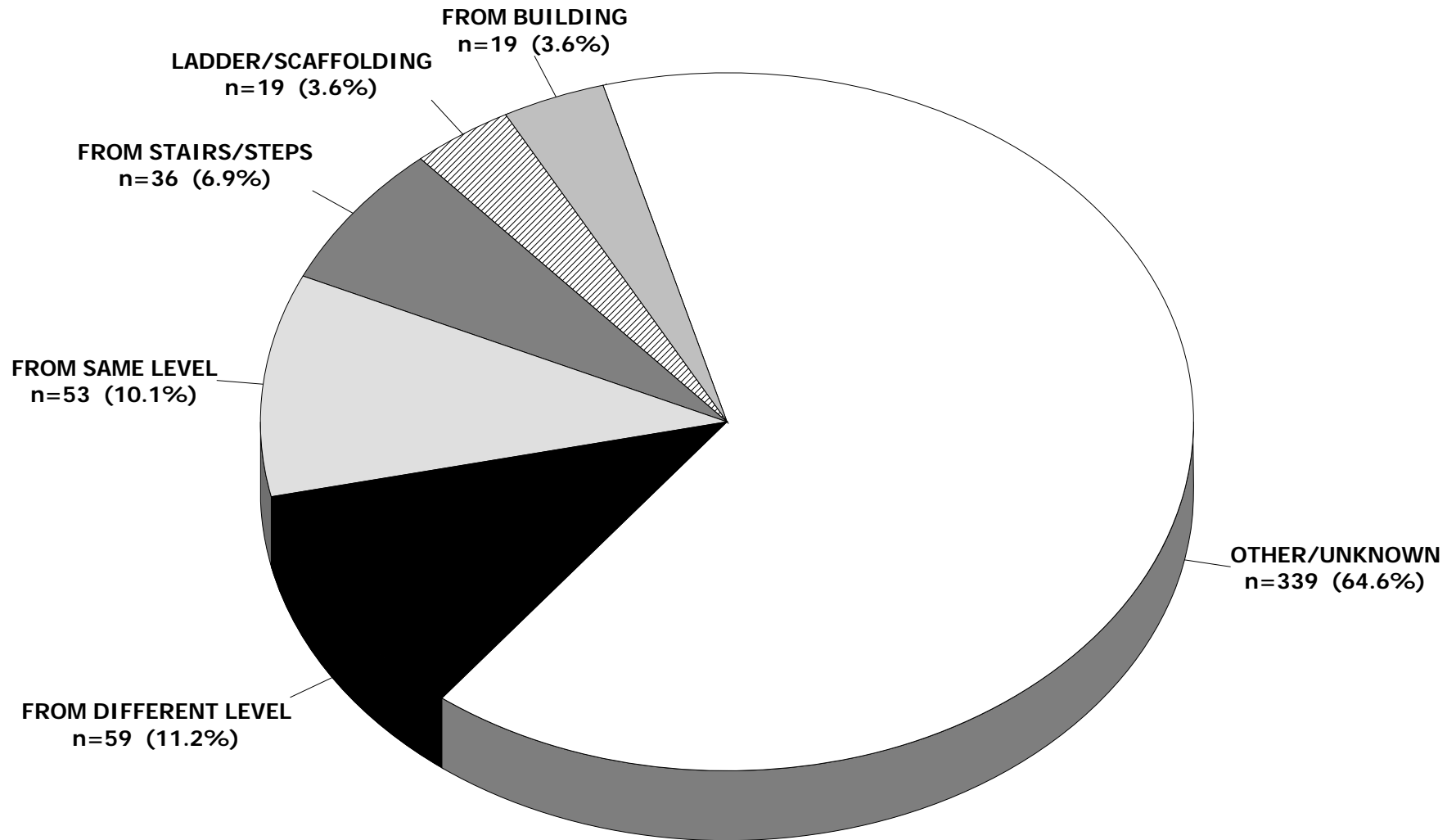
Cumulative Data, San Mateo County 1990-2008



Rates are not age-adjusted; 1990-1998 numbers and rates have been adjusted to comparability ratio 0.8409
 Source Data: California Department of Health Services, Center for Health Statistics, Death Records 1990-2008

Major Causes Of Deaths Due To Unintentional Falls

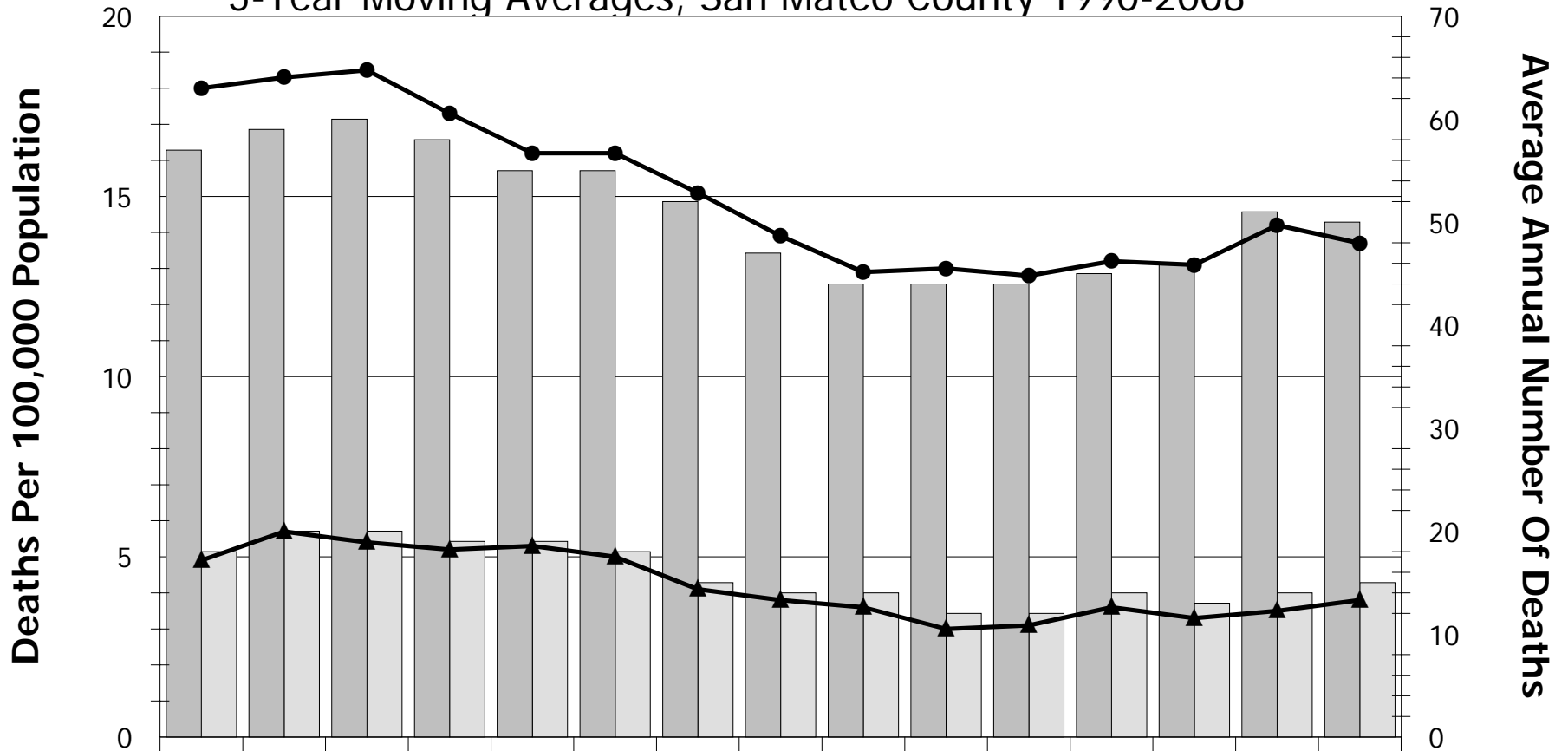
Cumulative Data, San Mateo County, 1990-2008



There were 528 total deaths due to unintentional falls from 1990-2008 (numbers have not been adjusted for comparability ratios)
Source Data: California Department of Health Services, Center for Health Statistics, Death Records 1990-2008

Suicides By Sex

5-Year Moving Averages, San Mateo County 1990-2008



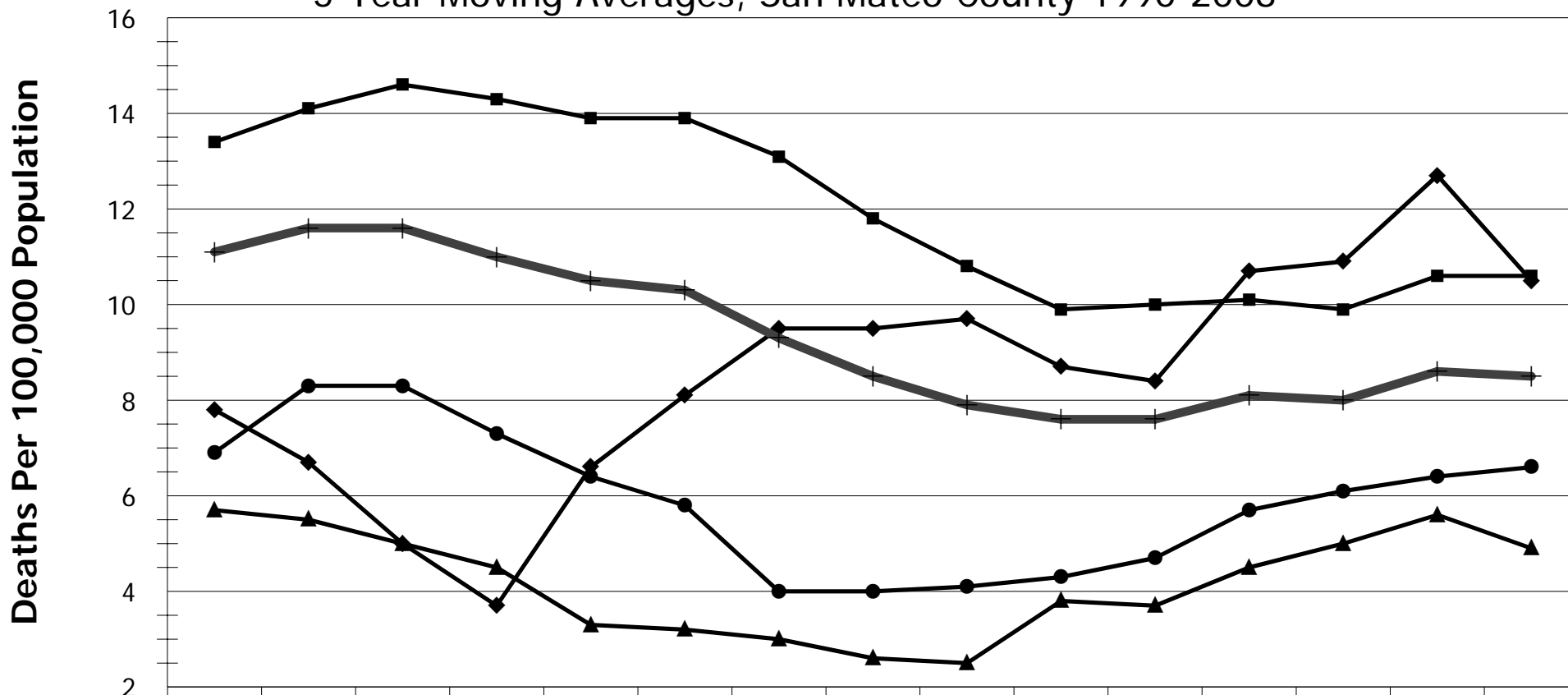
	90-94	91-95	92-96	93-97	94-98	95-99	96-00	97-01	98-02	99-03	00-04	01-05	02-06	03-07	04-08
Overall Rate	11.1	11.6	11.6	11	10.5	10.3	9.3	8.5	7.9	7.6	7.6	8.1	8	8.6	8.5
Number Male	57	59	60	58	55	55	52	47	44	44	44	45	46	51	50
Rate Male	18	18.3	18.5	17.3	16.2	16.2	15.1	13.9	12.9	13	12.8	13.2	13.1	14.2	13.7
Number Female	18	20	20	19	19	18	15	14	14	12	12	14	13	14	15
Rate Female	4.9	5.7	5.4	5.2	5.3	5	4.1	3.8	3.6	3	3.1	3.6	3.3	3.5	3.8

Rates are age-adjusted and standardized to Year 2000 population; 1990-1998 numbers and rates have been adjusted to comparability ratio 0.9962

Source Data: California Department of Health Services, Center for Health Statistics, Death Records 1990-2008

Suicides By Race/Ethnicity

5-Year Moving Averages, San Mateo County 1990-2008



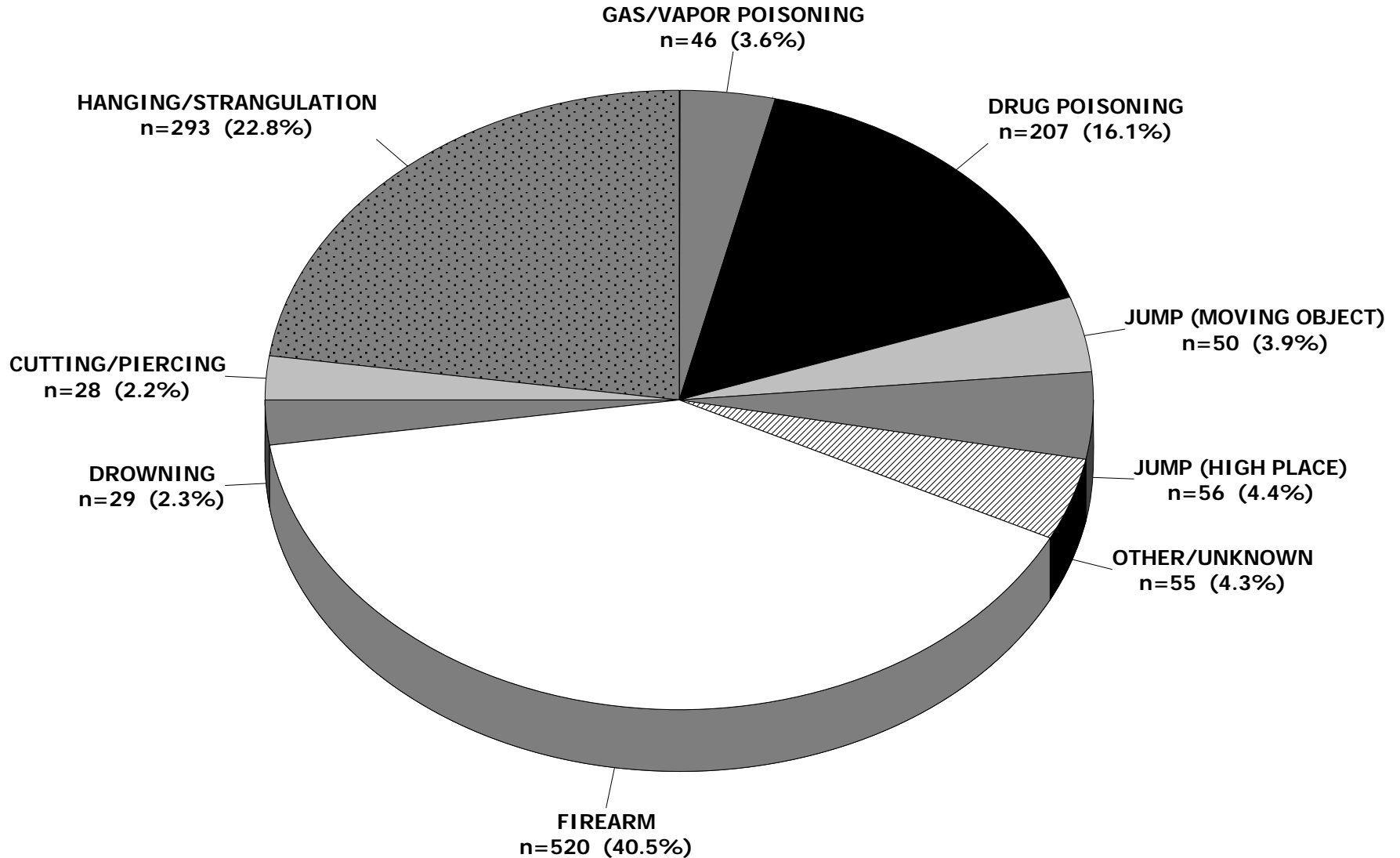
	90-94	91-95	92-96	93-97	94-98	95-99	96-00	97-01	98-02	99-03	00-04	01-05	02-06	03-07	04-08
All Races	11.1	11.6	11.6	11	10.5	10.3	9.3	8.5	7.9	7.6	7.6	8.1	8	8.6	8.5
Asian	6.9	8.3	8.3	7.3	6.4	5.8	4	4	4.1	4.3	4.7	5.7	6.1	6.4	6.6
Black	7.8	6.7	5	3.7	6.6	8.1	9.5	9.5	9.7	8.7	8.4	10.7	10.9	12.7	10.5
Hispanic	5.7	5.5	5	4.5	3.3	3.2	3	2.6	2.5	3.8	3.7	4.5	5	5.6	4.9
White	13.4	14.1	14.6	14.3	13.9	13.9	13.1	11.8	10.8	9.9	10	10.1	9.9	10.6	10.6

Rates are age-adjusted and standardized to Year 2000 population; 1990-1998 numbers and rates have been adjusted to comparability ratio 0.9962

Source Data: California Department of Health Services, Center for Health Statistics, Death Records 1990-2008

Major Causes Of Deaths Due To Suicide

Cumulative Data, San Mateo County, 1990-2008

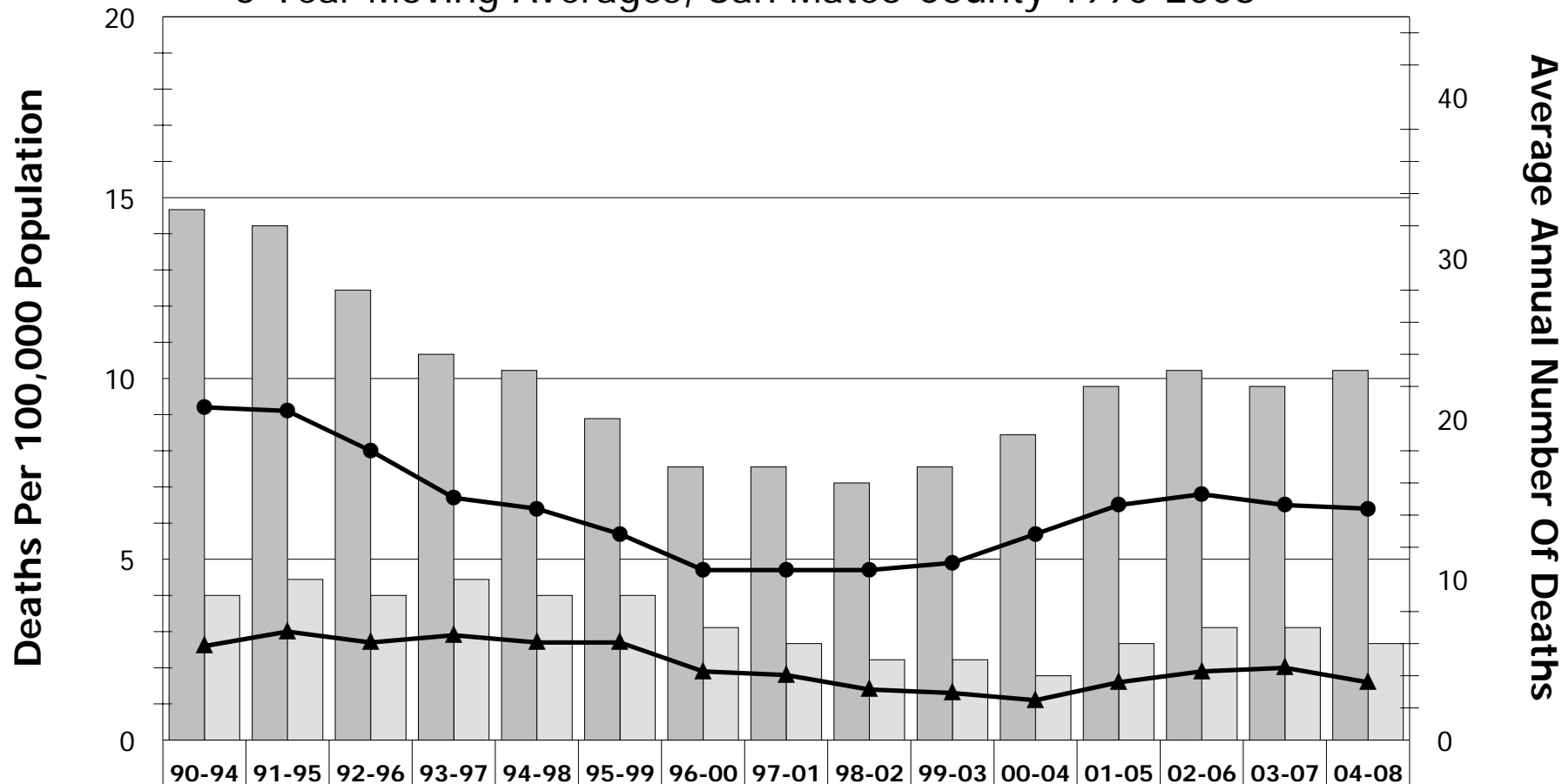


There were 1284 total deaths due to suicide from 1990-2008 (numbers have not been adjusted for comparability ratios)

Source Data: California Department of Health Services, Center for Health Statistics, Death Records 1990-2008

Homicides By Sex

5-Year Moving Averages, San Mateo County 1990-2008

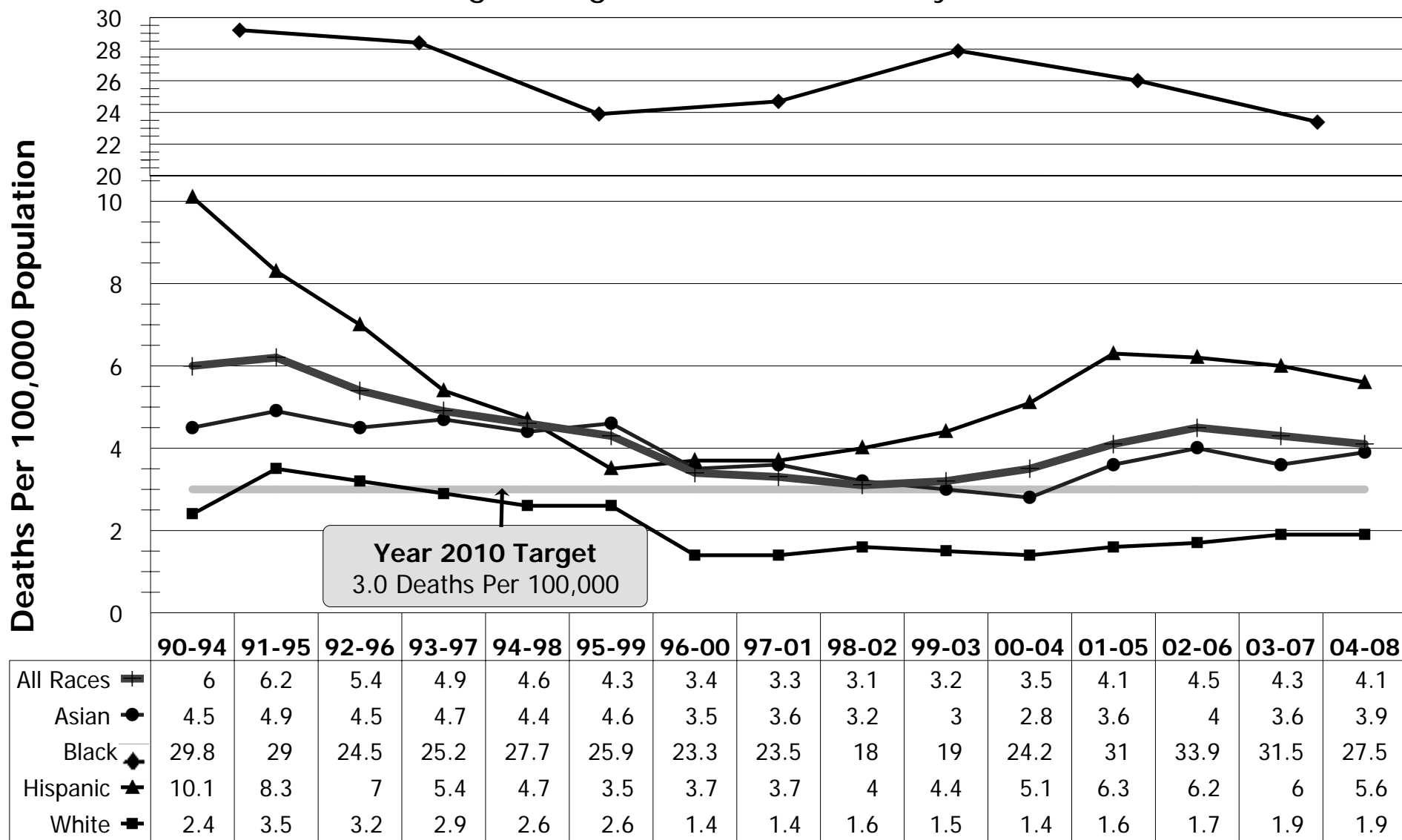


	90-94	91-95	92-96	93-97	94-98	95-99	96-00	97-01	98-02	99-03	00-04	01-05	02-06	03-07	04-08
Overall Rate	6	6.2	5.4	4.9	4.6	4.3	3.4	3.3	3.1	3.2	3.5	4.1	4.5	4.3	4.1
Number Male	33	32	28	24	23	20	17	17	16	17	19	22	23	22	23
Rate Male	9.2	9.1	8	6.7	6.4	5.7	4.7	4.7	4.7	4.9	5.7	6.5	6.8	6.5	6.4
Number Female	9	10	9	10	9	9	7	6	5	5	4	6	7	7	6
Rate Female	2.6	3	2.7	2.9	2.7	2.7	1.9	1.8	1.4	1.3	1.1	1.6	1.9	2	1.6

Rates are age-adjusted and standardized to Year 2000 population; 1990-1998 numbers and rates have been adjusted to comparability ratio 0.9983
 Source Data: California Department of Health Services, Center for Health Statistics, Death Records 1990-2008

Homicides By Race/Ethnicity

5-Year Moving Averages, San Mateo County, 1990-2008

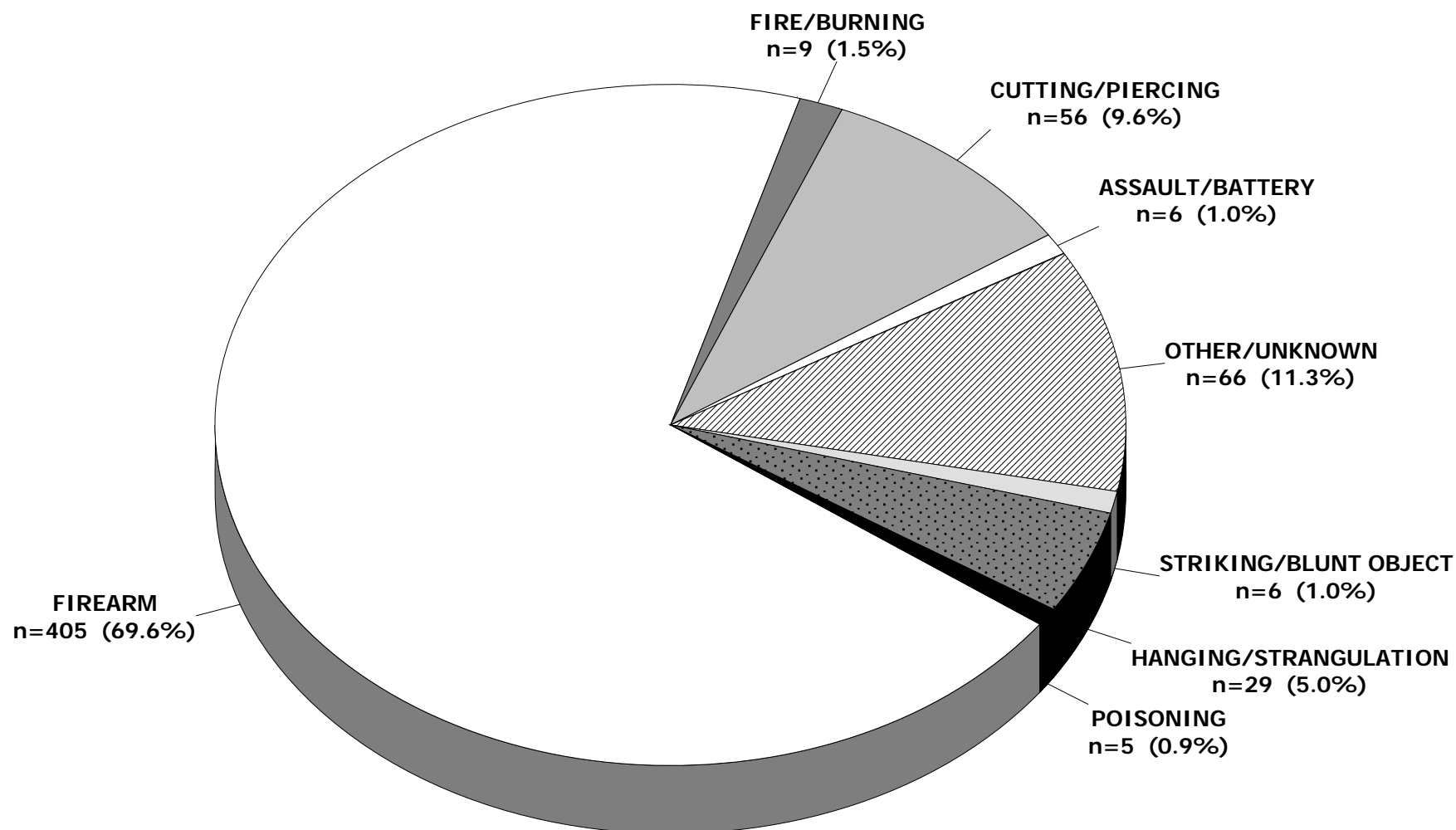


Rates are age-adjusted and standardized to Year 2000 population; 1990-1998 numbers and rates have been adjusted to comparability ratio 0.9983

Source Data: California Department of Health Services, Center for Health Statistics, Death Records 1990-2008

Major Causes Of Death Due To Homicide

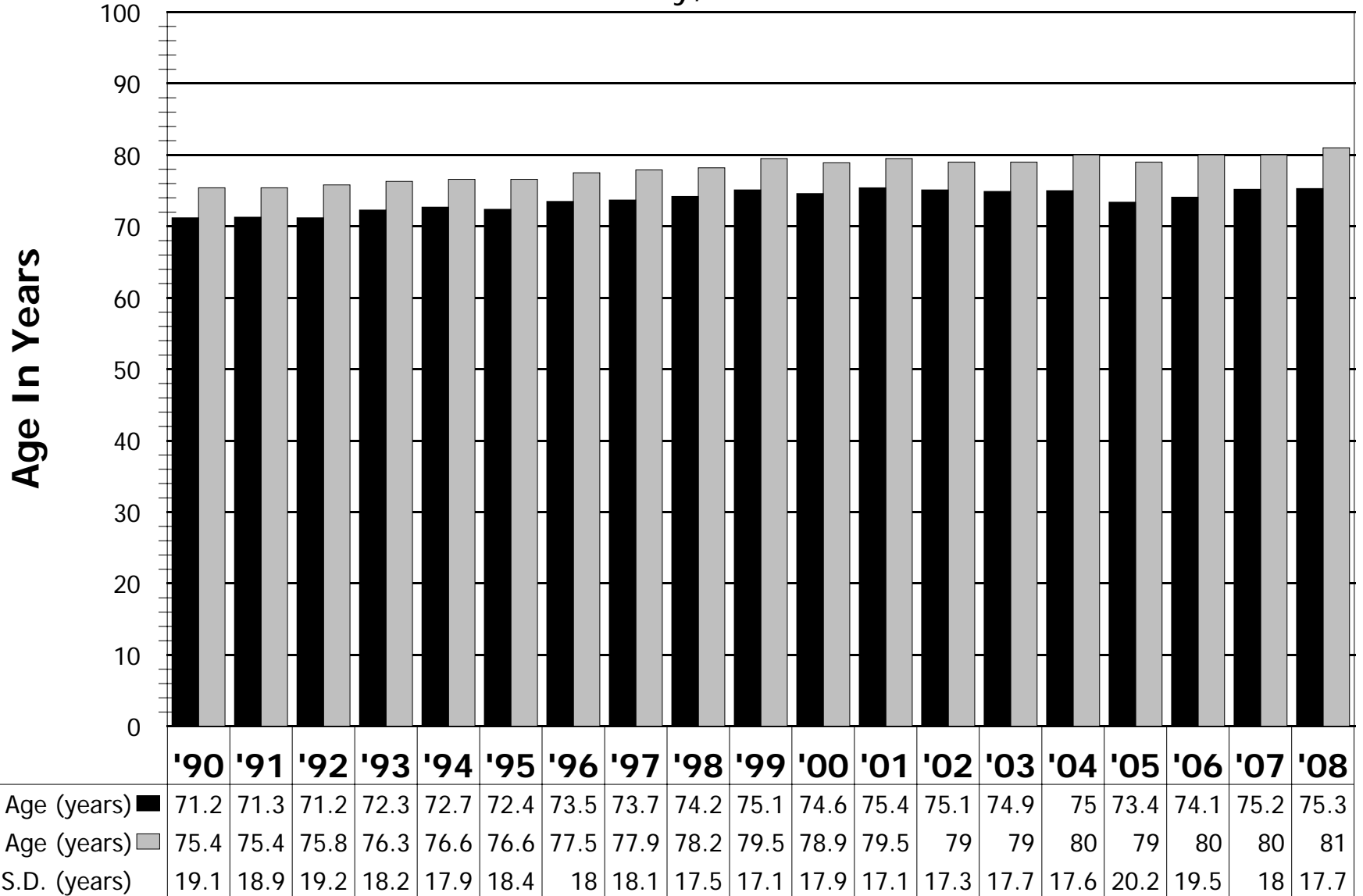
Cumulative Data, San Mateo County, 1990-2008



There were 582 total deaths due to homicide from 1990-2008 (numbers have not been adjusted for comparability ratios)
Source Data: California Department of Health Services, Center for Health Statistics, Death Records 1990-2008

Average Age Of Death In Years

San Mateo County, 1990-2008



Total Years Of Potential Life Lost By Cause Of Death

Selected Causes of Death, San Mateo County, 1990-2008

Cause of Death	1990	1991	1992	1993	1994	1995	1996	1997	1998	1999	2000	2001	2002	2003	2004	2005	2006	2007	2008
Cancer	10790	10785	10765	9561	10177	10089	10064	9466	10233	8828	8589	8389	9545	9058	9076	9010	8534	7802	7829
Cerebrovascular	1255	1289	1276	1528	1056	1359	1268	1187	1321	1248	1341	1044	867	903	1142	1078	1294	864	926
Diabetes	565	477	520	525	497	775	647	486	753	700	644	625	554	551	535	705	320	503	341
Heart Disease	6149	6253	6186	6004	5414	5161	5382	4933	5285	5232	4960	4840	4464	4783	4648	4492	6467	4520	4179
HIV/AIDS	2758	3192	3453	4060	4050	3314	2666	752	417	466	351	762	672	616	569	409	615	239	180
Homicide	1735	2018	2275	1661	1578	1928	807	1422	1156	741	573	755	1072	1374	1258	1717	1158	867	1182
Infectious Diseases	702	713	540	820	525	1092	974	679	493	736	710	831	408	551	288	557	452	631	691
Liver Disease	1704	1914	1725	1718	1857	1640	1458	1508	1109	832	943	1011	1222	1180	1452	1129	876	1430	1480
Pneumonia & Influenza	631	536	595	902	543	793	633	860	876	555	667	331	492	513	300	517	710	308	511
Respiratory Disease	1249	1454	948	1522	1206	1139	769	1120	1319	1019	1039	976	806	889	743	646	794	892	798
Suicide	1947	1874	2327	2459	2224	2372	2369	1724	2276	1705	1492	1119	1158	1734	1708	1749	1424	1831	1636
Unintentional Injury	5518	4175	5006	4064	3862	4658	3956	3631	2944	3863	3640	3166	3873	4097	3657	3431	4081	4120	3648
All Causes	43674	42614	44046	40519	38762	41207	37455	36137	34835	32006	32726	30519	30530	32542	31191	33457	34751	30411	29101

Years of potential life lost was calculated for life expectancy to age 75

Source Data: California Department of Health Services, Center for Health Statistics, Death Records 1990-2008

Annual Rates Of Years Of Potential Life Lost

Selected Causes of Death, San Mateo County, 1990-2008

Cause of Death	1990	1991	1992	1993	1994	1995	1996	1997	1998	1999	2000	2001	2002	2003	2004	2005	2006	2007	2008
Cancer	174.2	172.9	171.4	151.1	159.7	157.3	155.8	145.5	156.2	133.9	129.4	126.5	145.3	138.4	138.8	137.8	124.9	113.3	112.9
Cerebrovascular	20.3	20.7	20.3	24.2	16.6	21.2	19.6	18.2	20.2	18.9	20.2	15.7	13.2	13.8	17.5	16.5	18.9	12.6	13.4
Diabetes	9.1	7.6	8.3	8.3	7.8	12.1	10	7.5	11.5	10.6	9.7	9.4	8.4	8.4	8.2	10.8	4.7	7.3	4.9
Heart Disease	99.3	100.2	98.5	94.9	85	80.4	83.3	75.8	80.7	79.3	74.7	73	68	73.1	71.1	68.7	94.7	65.7	60.3
HIV/AIDS	44.5	51.2	55	64.2	63.6	51.7	41.3	11.6	6.4	7.1	5.3	11.5	10.2	9.4	8.7	6.3	9	3.5	2.6
Homicide	28	32.4	36.2	26.3	24.8	30.1	12.5	21.9	17.7	11.2	8.6	11.4	16.3	21	19.2	26.2	17	12.6	17
Infectious Diseases	11.3	11.4	8.6	13	8.2	17	15.1	10.4	7.5	11.2	10.7	12.5	6.2	8.4	4.4	8.5	6.6	9.2	10
Liver Disease	27.5	30.7	27.5	27.2	29.1	25.6	22.6	23.2	16.9	12.6	14.2	15.2	18.6	18	22.2	17.3	12.8	20.8	21.3
Pneumonia & Influenza	10.2	8.6	9.5	14.3	8.5	12.4	9.8	13.2	13.4	8.4	10	5	7.5	7.8	4.6	7.9	10.4	4.5	7.4
Respiratory Disease	20.2	23.3	15.1	24.1	18.9	17.8	11.9	17.2	20.1	15.5	15.7	14.7	12.3	13.6	11.4	9.9	11.6	13	11.5
Suicide	31.4	30	37	38.9	34.9	37	36.7	26.5	34.8	25.9	22.5	16.9	17.6	26.5	26.1	26.7	20.8	26.6	23.6
Unintentional Injury	89.1	66.9	79.7	64.2	60.6	72.6	61.2	55.8	45	58.6	54.8	47.7	59	62.6	55.9	52.5	59.7	59.9	52.6
All Causes	705.2	683.2	701.1	640.5	608.4	642.3	579.8	555.6	531.9	485.4	493	460.1	464.8	497.4	476.9	511.5	508.7	441.8	419.7

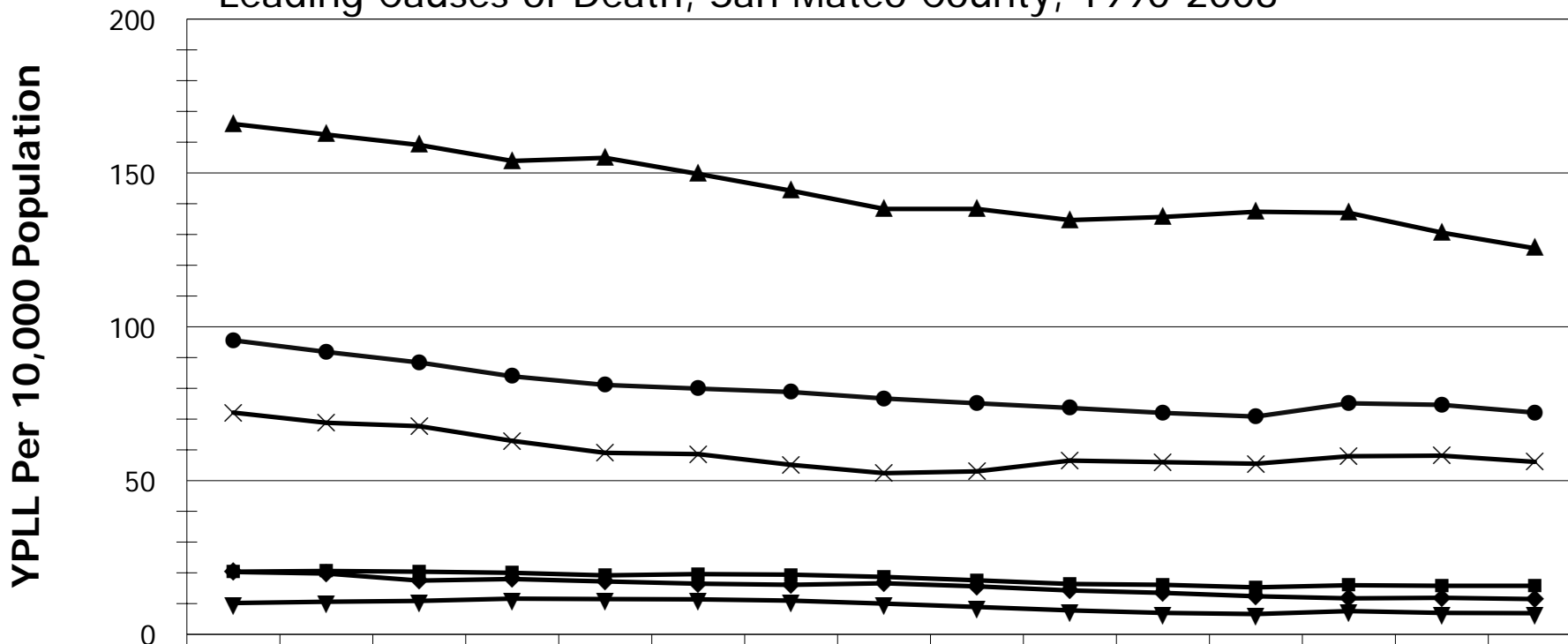
Rates are unadjusted per 10,000 population under 75 years of age.

Years of potential life lost was calculated for life expectancy to age 75

Source Data: California Department of Health Services, Center for Health Statistics, Death Records 1990-2008

Annual Rates Of Years Of Potential Life Lost By Cause Of Death

Leading Causes of Death, San Mateo County, 1990-2008



	90-94	91-95	92-96	93-97	94-98	95-99	96-00	97-01	98-02	99-03	00-04	01-05	02-06	03-07	04-08
All Causes	667.7	655.1	634.4	605.3	583.6	559	529.1	505.2	487.1	480.2	478.5	482.2	491.9	487.3	471.7
Heart Disease ●	95.6	91.8	88.4	83.9	81.1	79.9	78.8	76.7	75.1	73.6	72	70.8	75.1	74.6	72.1
Cancer ▲	165.9	162.5	159.1	153.9	154.9	149.7	144.2	138.3	138.3	134.7	135.7	137.4	137	130.6	125.5
Cerebrovascular Disease ■	20.4	20.6	20.4	20	19.2	19.6	19.4	18.7	17.6	16.4	16.1	15.3	16	15.8	15.8
Respiratory Disease ◆	20.3	19.8	17.5	18	17.2	16.5	16.1	16.6	15.6	14.3	13.5	12.4	11.7	11.9	11.5
Pneumonia & Influenza ▼	10.2	10.6	10.9	11.6	11.5	11.4	11	10	8.9	7.8	7	6.6	7.6	7	6.9
Unintentional Injury ✕	72.1	68.8	67.7	62.9	59	58.6	55.1	52.4	53	56.5	56	55.5	57.9	58.1	56.1

Rates are unadjusted per 10,000 population under 75 years of age.

Years of potential life lost was calculated for life expectancy to age 75.

Source Data: California Department of Health Services, Center for Health Statistics, Death Records 1990-2008