

Clinical Simulation Learning For Stroke Teams

Kaiser South San Francisco Patient Care Services

Josephine Reyes, RN, MSN

Director Clinical Education, Practice, Informatics & Simulation Learning Center



Our South San Francisco KP Journey Learning and Simulation

Why Simulation-Based Learning

Simulation Background at Kaiser Permanente

Critical Events Team Training

South San Francisco Stroke Program

Simulation - Interactive and Fun Learning



“Amplifies real experiences with guided ones to evoke or replicate substantial aspects of the real world interactions”

- Lateef, 2010

Journal of Emergency Trauma Shock

Simulation Background at KP



Simulation Background at Kaiser Permanente

- Initiated for South San Francisco, 2007 with NCAL Regional Training
- SSF Education Department developed Critical Events Team Training CORE team
- Stroke care was one of the first case scenarios for simulation
- Many simulations prior to going “live” with Stroke Program

Critical Events Team Training

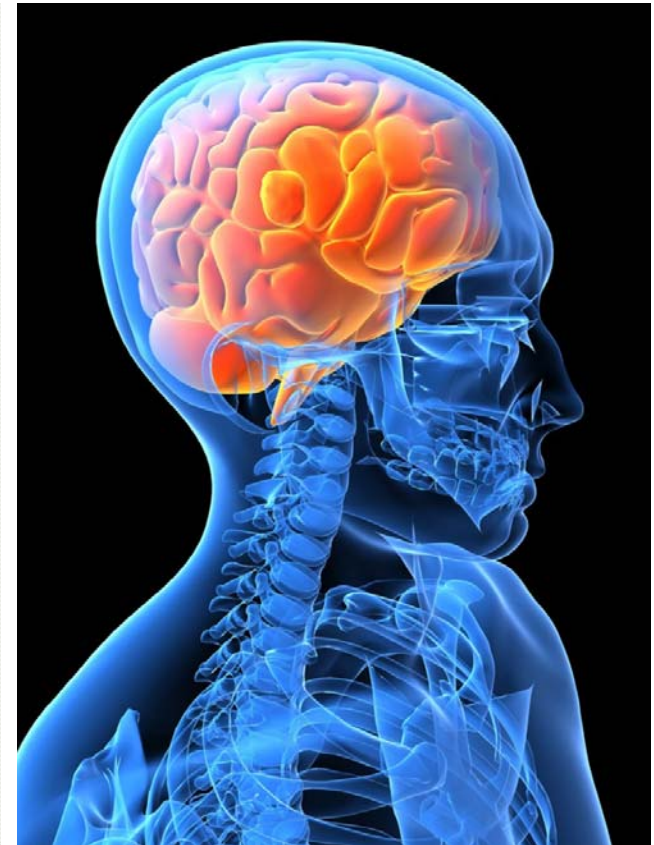
Teamwork and Communication

- Introduced concept of “safe learning” for error reduction
- Opportunities to apply clinical skills, teamwork, & communication skills in “real-time”
- Team consisted of nursing educators, nursing managers, frontline nursing staff, respiratory therapy, ancillary staff, and providers
- Use of high-fidelity manikins and other technology
- Gives opportunity for teams to “demonstrate” safe patient care
- Debriefing by finding strengths and identifying “opportunities” for improvements



SSF Stroke Program

- SSF program initiated in 2007
- Teams were “new” and department processes have not been operational – (i.e. Stroke Alert team)
- Simulation was essential to “test” out workflows/systems under assumptions
- Many learnings/lessons shared
- Processes redefined with input from all





Practicing Safe Patient Care

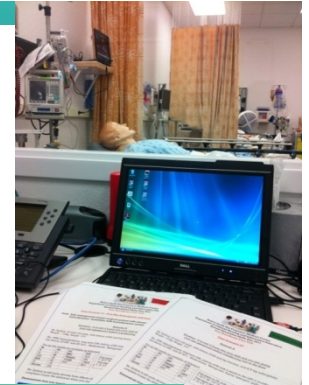
Stroke Program - Simulations



- Emergency Department patient “stroke alert”
- Stroke alert for inpatients – difference between ED and Inpatient
- Evaluation of department processes (i.e. Lab/Radiology/Operators)
- Frontline clinical providers, team communication, escalation process
- Interdepartmental systems – how did they work in relation to written process
- New clinical assessments (i.e. mNIHSS)
- Unique situations - neurosurgical patients
- KPHC documentation essentials
- Debriefing strengths of Stroke program and identification of areas of growth opportunities

During Simulation

Interactive and Fun Learning



Communication

- Practicing SBAR
- Calling out orders
- Handling stress
- Stroke Alerts
- Chaotic or Calm

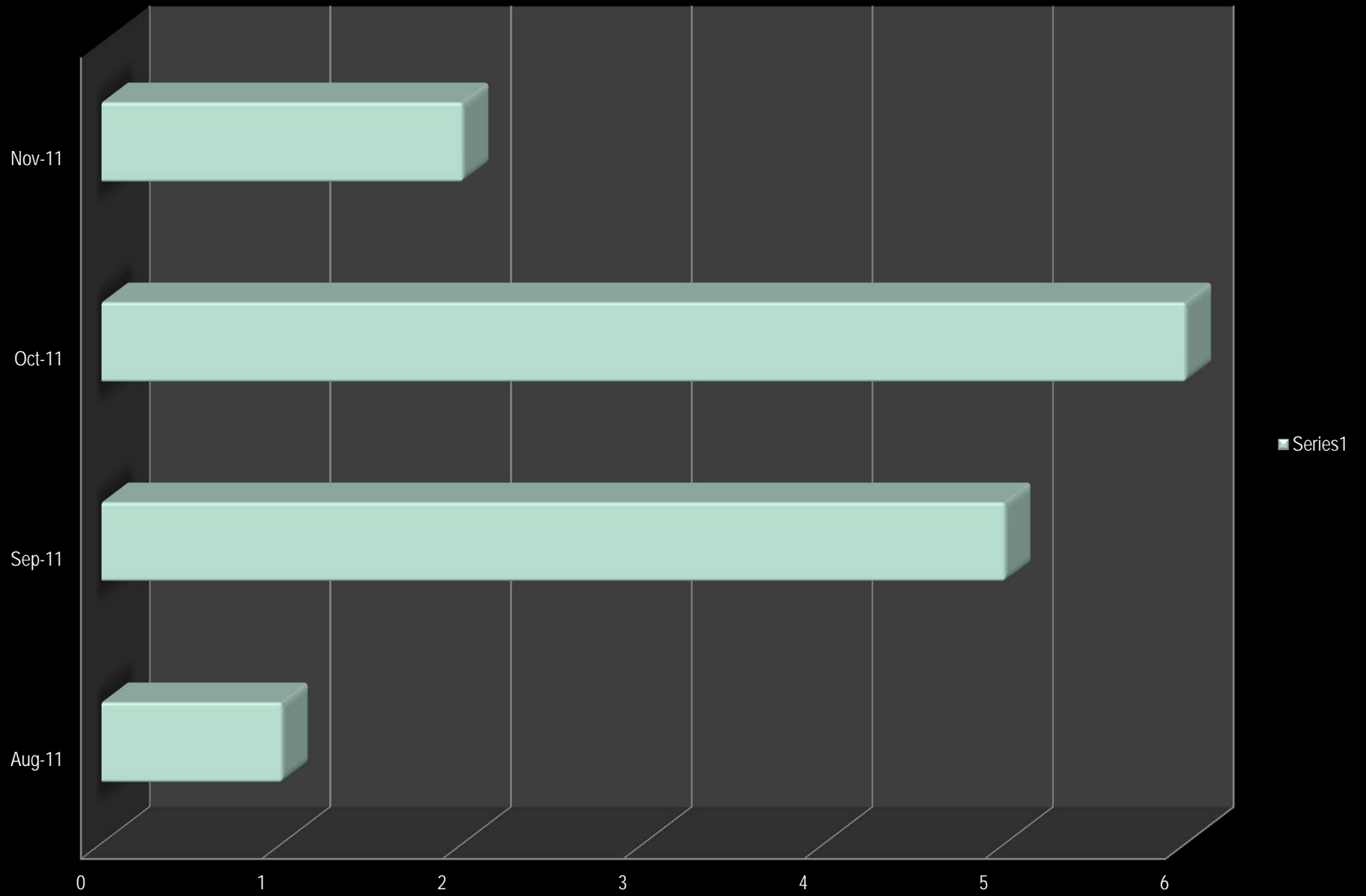
Systems/Procedure-Skills

- Stroke Team roles
- Which system needs further evaluation
- Skill development
- Timing of interventions

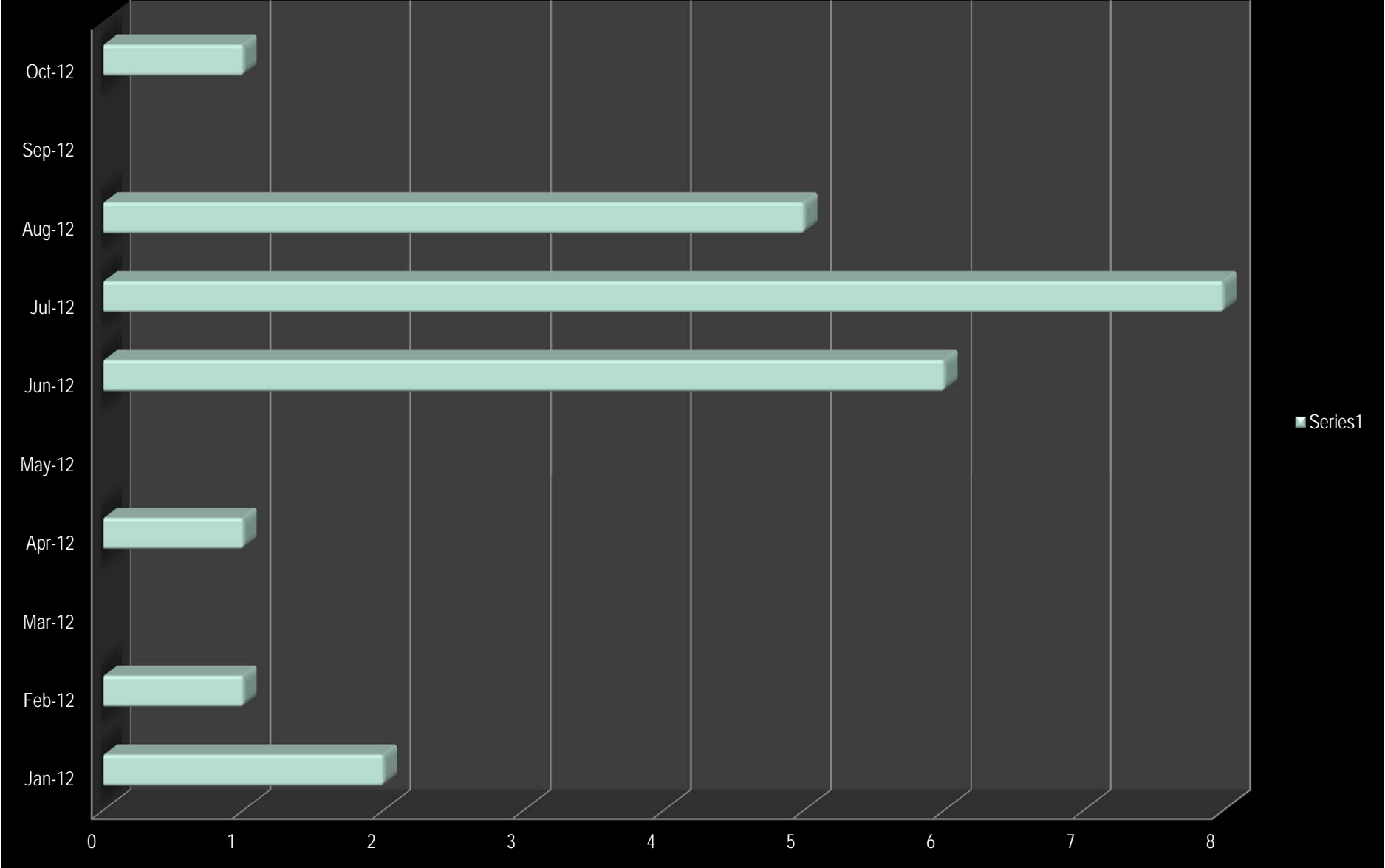
Teamwork

- Who is the leader
- Supportive teams
- Role during a crisis
- Recognizing contributions

2011 Number of Simulation Events Since Sim Lab Opening



2012 Number Of Simulation Events By Month



Home

- [My Portfolio](#)
- [Course Catalog](#)
- [Calendar](#)
- ▶ [Resources](#)
- ▶ [Training](#)
- [Conferences](#)



Welcome

The Kaiser Permanente National Healthcare Simulation Collaborative was initiated to organize efforts to provide all eight KP regions with robust simulation programs in a variety of areas in order to reduce adverse events. The vision for our program is to promote learning and practice using simulation-based education to improve safety and to create highly reliable teams.

National Simulation Collaborative activities include monthly teleconferences, quarterly project manager phone meetings, annual simulation conferences, simulation equipment training, multidisciplinary critical events team training as well as standardized, simulation-based programs, on-line tool kits and resources, scenario development and a national on-line learning management

Events

2013 APIC Conference
enduring materials - [videos](#)

Magic in Teaching Conference
Irvine, CA, Nov 12 - 14, 2013

International Meeting for Simulation in Healthcare 2014 Conference
San Francisco, Jan 26- 28, 2014

Featured Courses



CENTRAL VENOUS CATHETERIZATION

LEARNING LUMBAR PUNCTURE

MAS STAR TRAIN THE TRAINER PROGRAM

PARACENTESIS

STANDARDIZED SKILL AND TEAM-BASED TRAINING FOR VACUUM, SHOULDER DYSTOCIA, AND EFM DRILLS

THORACENTESIS

Recent News

[More articles »](#)

Oakland Medical Center Patient Safety Simulation Training Center

San Jose Center for Advanced Research and Education

Walnut Creek Simulation Center

South Sacramento Simulation Center

Santa Rosa Simulation Center

San Rafael Simulation Center

Sacramento Simulation Center

KRON News Story on the Article Archive



“Simulation, therefore has an immense capacity to become an integral part of the drive to build a safer healthcare system for patients everywhere”

- Aggarwal et al, 2010. *Training and simulation for patient safety.*
Quality Safe Health Care Journal

Sharing Proud Moments Photo Slideshow



References

- Aggarwal et al. (2010). Training and simulation for patient safety. *Quality Safe Health Care*; 19 (Supp 2):i340i43.
- Lateef, Fatimah. (2010) Simulation-based learning: Just like the real thing. *Journal Emergency Trauma Shock*. Oct-Dec: 3(4); 348-352.
- Kaiser Permanente Medical Center Simulation Based Education Program. Available at: <http://kp.simmedical.com/>
- Kaiser Permanente National Risk and Patient Safety. Critical Events Team Training Program. (2007).
http://kpnet.kp.org:81/california/ncqrs/patient_safety/index.html