

## Additional Resources for Consumers & Families

**Psychiatric Emergency Services** 650.573.2662

**Suicide Prevention** 1.800.784.2433

### **Crisis—Youth & Family Enrichment Services**

24-hour Crisis Line 650.579.0350

24-hour Alcohol & Drug Helpline 650.301.8720

24-hour Parent Support Line 650.579.0358

[www.YFES.org](http://www.YFES.org) or <http://crisiscenter.cc>

**ACCESS/Dual Diagnosis Team** offers information, referral and assessment for mental health services. 1.800.686.0101

(Calls forward to Psych Emergency after hours & on weekends)

**Consumer Self Help Program** 650.343.8760

(Heart & Soul)

**Patient's Rights Advocates** 1.800.497.1889

**Office of Consumer & Family Affairs** 1 800.388.5189

### **California State Department of Mental Health**

[www.dmh.ca.gov](http://www.dmh.ca.gov)

**Community Information Program** through the Peninsula Library System lists local government and community based organizations. [cip.plsinfo.org](http://cip.plsinfo.org)

### **Disability Benefits 101**

[www.disabilitybenefits101.org](http://www.disabilitybenefits101.org)

**National Alliance on Mental Illness (NAMI), San Mateo County** offers support, education and advocacy for consumers and family members. 650.638.0800

[www.namismc.org](http://www.namismc.org)

**Network of Care** contains an array of resources and information for the mentally ill and their families.

[www.sanmateo.networkofcare.org](http://www.sanmateo.networkofcare.org)

### **Protection and Advocacy, Inc.**

[www.pai-ca.org](http://www.pai-ca.org)

**United Advocates for Children of California** with mental health issues. [www.UACC4families.org](http://www.UACC4families.org)

San Mateo County Health Department  
Mental Health Services

## San Mateo County Health Department Mental Health Services



## Pathways

*Pathways is a partnership of the San Mateo County Courts, Probation Dept., District Attorney, Private Defender Program, Sheriff's Office, Correctional Health, and Mental Health Services*

1.800.388.5189

Multi-lingual

[www.smhealth.org/mental.html](http://www.smhealth.org/mental.html)

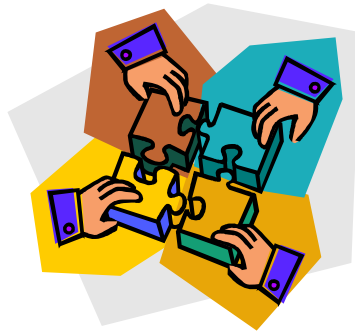
[sanmateo.networkofcare.org](http://sanmateo.networkofcare.org)

## What is Pathways?

*Pathways is a partnership of the San Mateo County Courts, Probation Department, District Attorney, Private Defender Program, Sheriff's Office, Correctional Health, and Mental Health Services. Pathways is an alternate path through the criminal justice system for those with serious mental illness. Pathways participants may have a co-occurring substance abuse disorder, as long as a serious mental illness is also present.*

*The criterion for eligibility includes:*

- Statutory eligibility for probation
- San Mateo County residency
- A diagnosis of a serious mental illness
- Voluntarily agree to participate
- Be age 18 or older



*Translation services are provided at no cost to anyone who needs them.*

## What are the components of Pathways?

**For those Court ordered into Pathways the components include:**

- Peer support/mentoring
- Treatment & Recovery Plan Services
  - Treatment plan & medication services
  - Supportive housing services
  - Treatment & recovery support for co-occurring MH/substance use
  - Psycho-educational/recovery services
  - Service coordination including assistance/linkage with health care services
- Family education and support
- Monitoring, supervision and support of treatment/recovery/behavior
- Intensive Probation supervision

### How do I refer someone to Pathways?

- Complete an "Initial Referral for Screening for Pathways" form and return it to: Adult Probation, 400 County Center, 5th Floor, Redwood City, CA 94063, ATTN: Pathways

**For more information and where to obtain a referral form call: 650.573.2159.**

**En Español  
650.573.2189**

## What to do when a loved one with mental illness has been arrested...

Step 1: Support your loved one

- When you get a call from your loved one saying he/she has been arrested, stay calm & offer your help & support
- If your loved one is being held in a jail, remind him/her of the right to have an attorney present when being questioned by the police
- If he/she is at the Maguire Correctional Facility he/she will be screened, evaluated, and treated by the Correctional Mental Health Services Staff

Step 2: Contact the County Jail

- After your loved one arrives at the Maguire Jail in San Mateo County, you may call: 650.363.4311 (men's facility and women's intake) or 650.363.4310 (women's facility) to get information about the facility and family visits.

Step 3: Send a fax (650.363.1904)

- Once your loved one has been booked into the facility, you may prepare a fax requesting that they be screened by mental health staff. Begin your fax with:
  1. Your loved one's full legal name
  2. Date of birth
  3. Current location if knownIn the body of the fax, include:
  1. His/her diagnosis
  2. Psychiatrist's or treating physician's name, phone number and address
  3. All current medication(s), dosage, time of day to be administered, name and number of the pharmacy
  4. Information on medication that has proven to be ineffective or has undesirable side effects
  5. Any history of suicide attempts or threats
  6. Any other medical conditions that might require immediate attention and medication currently prescribed for those conditions

Do NOT address any impending charges in this fax. If your loved one has provided you with a written confidentiality waiver, please fax a copy of it.